

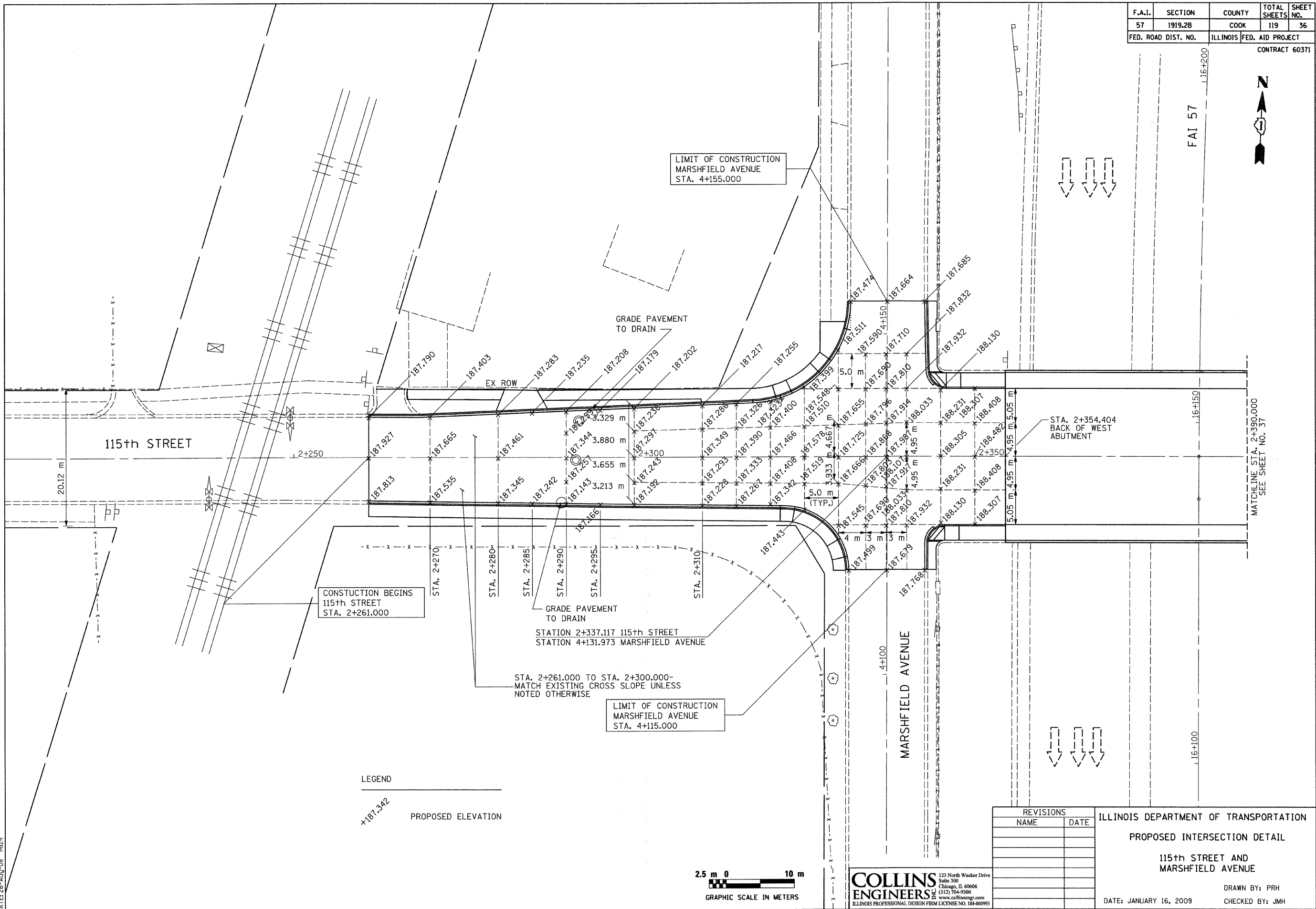
F.A.I.	SECTION	COUNTY	TOTAL SHEETS	SHEET NO.
57	1919.2B	COOK	119	36
FED. ROAD DIST. NO.		ILLINOIS FED. AID PROJECT	CONTRACT 60371	



FAI 57

16+100
16+150

MATCHLINE STA. 2+390.000
SEE SHEET NO. 37

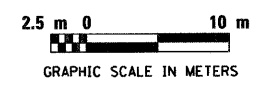


CONSTRUCTION BEGINS
115th STREET
STA. 2+261.000

LIMIT OF CONSTRUCTION
MARSHFIELD AVENUE
STA. 4+155.000

LIMIT OF CONSTRUCTION
MARSHFIELD AVENUE
STA. 4+115.000

LEGEND
+187.342
PROPOSED ELEVATION



REVISIONS	
NAME	DATE

ILLINOIS DEPARTMENT OF TRANSPORTATION
PROPOSED INTERSECTION DETAIL
**115th STREET AND
MARSHFIELD AVENUE**
DRAWN BY: PRH
CHECKED BY: JMH
DATE: JANUARY 16, 2009

COLLINS ENGINEERS
123 North Wacker Drive
Suite 310
Chicago, IL 60606
(312) 704-9300
www.collinseng.com
ILLINOIS PROFESSIONAL DESIGN FIRM LICENSE NO. 184-000993

FILE: g:\2304\civil\exhibit\2304035.dgn
DATE: 26-AUG-08 14:24