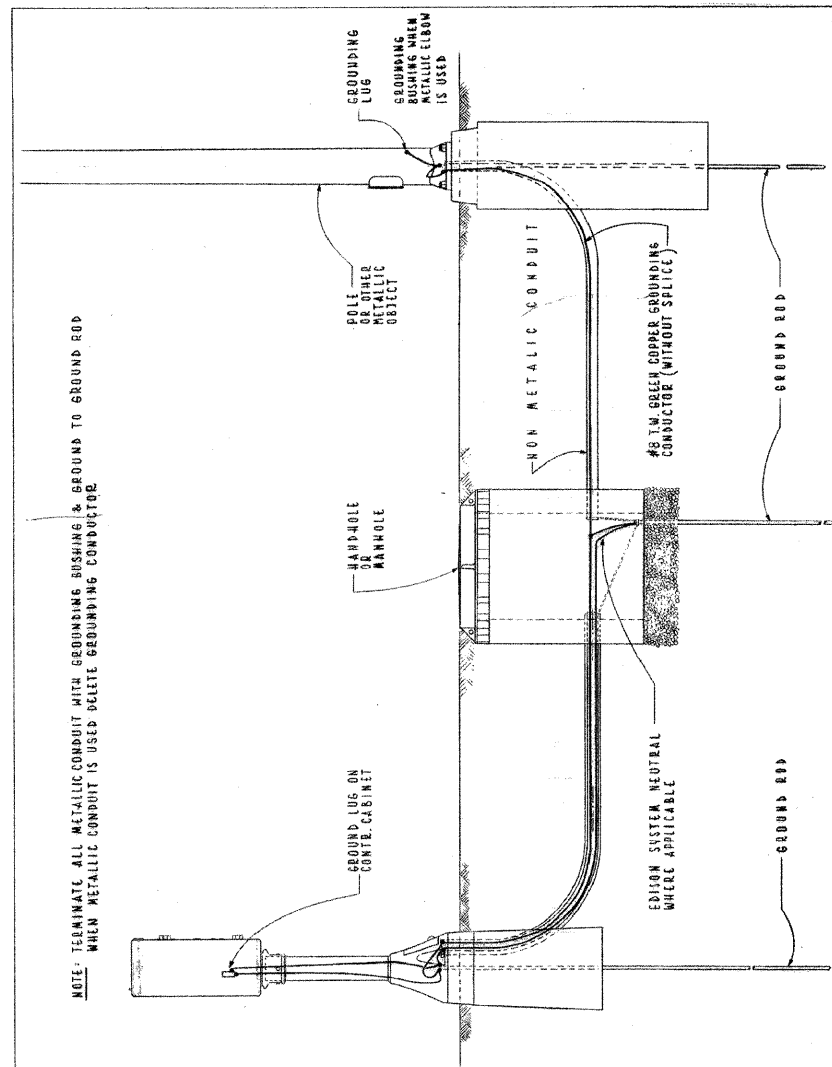


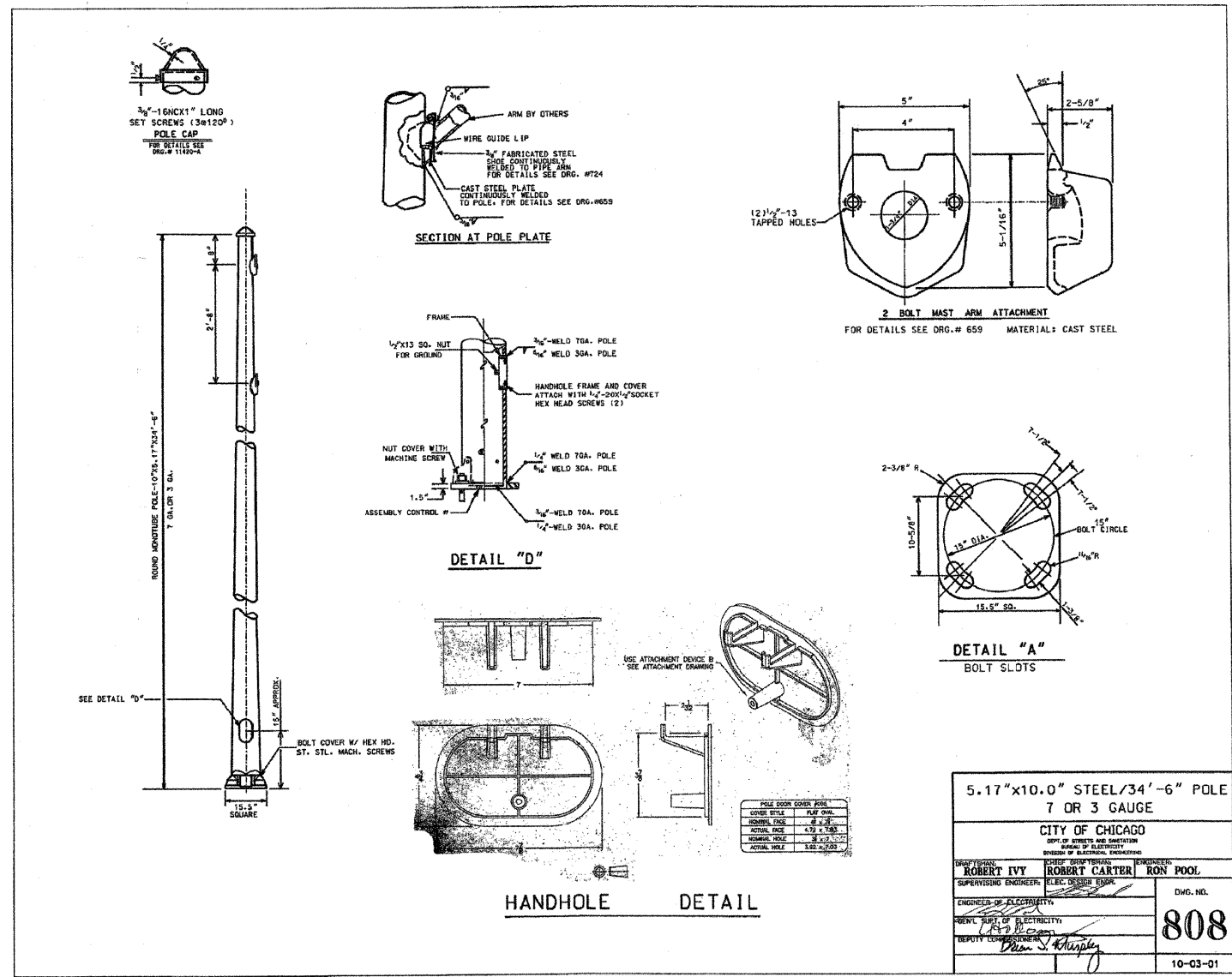
| | | | | |
|---------------------|---------|---------------------------|--------------|-----------|
| F.A.I. RTE. | SECTION | COUNTY | TOTAL SHEETS | SHEET NO. |
| 57 | 1919.2B | COOK | 119 | 57 |
| STA. | | TO STA. | | |
| FED. ROAD DIST. NO. | | ILLINOIS FED. AID PROJECT | | |

CONTRACT #60371



NOTE: TERMINATE ALL METALLIC CONDUIT WITH GROUNDING BUSHING & GROUND TO GROUND ROD WHEN METALLIC CONDUIT IS USED DELETE GROUNDING CONDUCTOR.

| TYPICAL GROUNDING METHODS FOR BUREAU OF ELECTRICITY EQUIPMENT | | | |
|--|-------------------|----------------|---------------|
| CITY OF CHICAGO DEPT. OF STREETS & SANITATION BUREAU OF ELECTRICITY DIVISION OF ELEC. ENGINEERING | | | |
| REVISED | DRAWN | CHECKED | ENGINEER |
| A | E. GERULLS | M. SHINE | J. DONNOS |
| B | Supt. [Signature] | | ENG. NO. |
| C | Supt. [Signature] | | 736 |
| D | Supt. [Signature] | | |
| E | Supt. [Signature] | | |
| F | Supt. [Signature] | | |
| SIZE: 8 1/2" x 14" | | SCALE: 1" = 1' | DATE: 5-12-76 |



| | |
|--|---------------------------------|
| 5.17"x10.0" STEEL/34'-6" POLE 7 OR 3 GAUGE | |
| CITY OF CHICAGO DEPT. OF STREETS AND SANITATION BUREAU OF ELECTRICITY DIVISION OF ELECTRICITY ENGINEERING | |
| DESIGNED BY: ROBERT IVY | ENGINEERED BY: ROBERT CARTER |
| CHECKED BY: [Signature] | DEPT. CHIEF: [Signature] |
| DWG. NO. 808 | |
| 10-03-01 | |

* CITY OF CHICAGO BUREAU OF ELECTRICITY STANDARD DRAWINGS ARE PROVIDED IN ENGLISH UNITS.

SINGH SINGH & ASSOCIATES, INC.
CONSULTING ENGINEERS

| REVISIONS | | ILLINOIS DEPARTMENT OF TRANSPORTATION 115TH STREET OVER I-57 CITY OF CHICAGO BUREAU OF ELECTRICITY STANDARD DRAWINGS |
|--------------------------------|------|--|
| NAME | DATE | |
| | | SCALE: NONE DATE: 01-16-09 |
| | | |
| | | |
| | | |
| | | |
| DRAWN BY: VG CHECKED BY: PV | | |