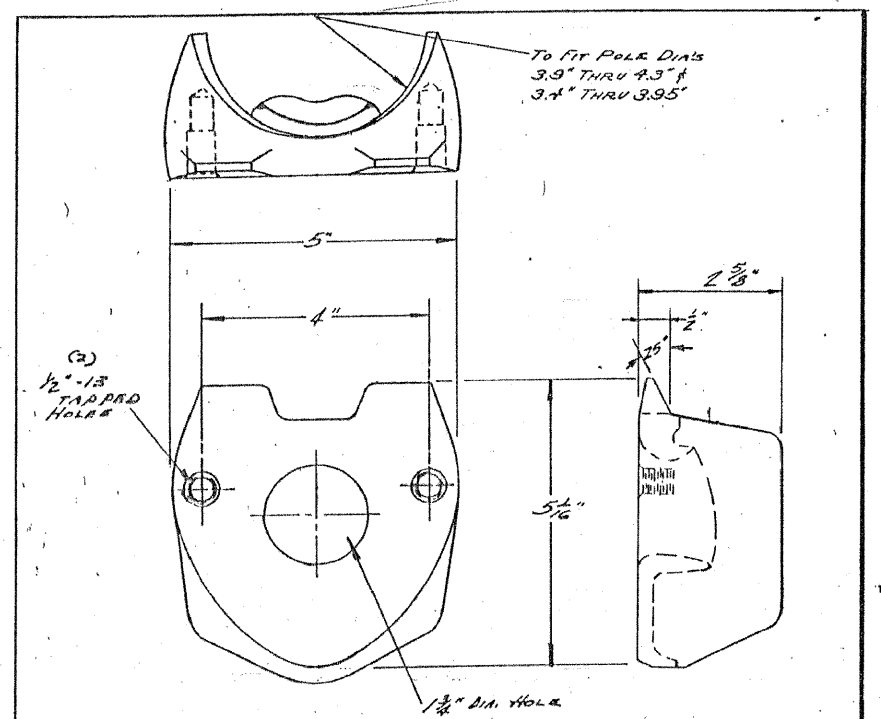


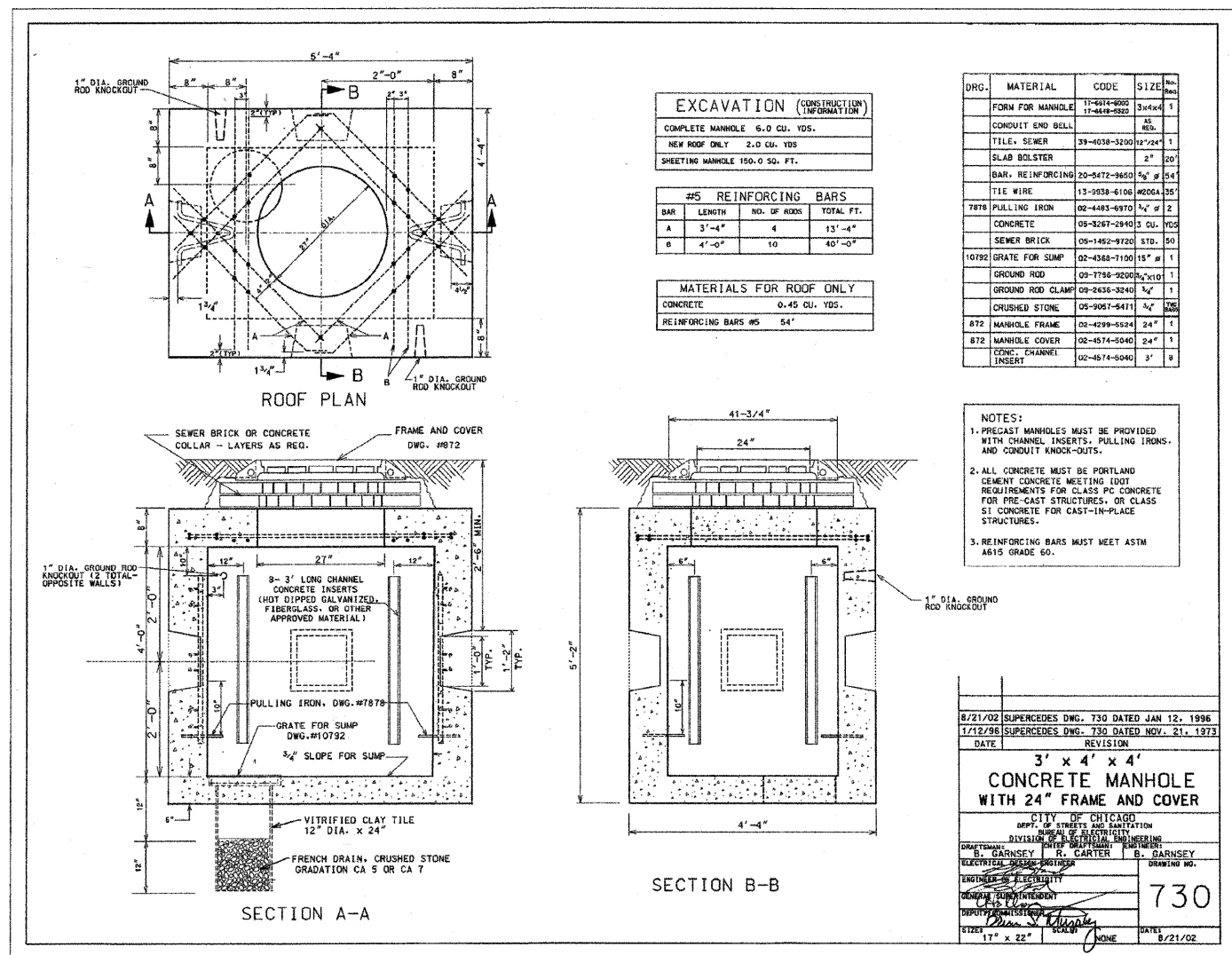
F.A.I. RTE.	SECTION	COUNTY	TOTAL SHEETS	SHEET NO.
57	1919.2B	COOK	119	71
STA.		TO STA.		
FED. ROAD DIST. NO.		ILLINOIS FED. AID PROJECT		

CONTRACT #60371



MATERIAL: CAST STEEL

A J.O.C. MATERIAL NOTE ADDED.	
2 BOLT MAST ARM ATTACHMENT POLE PLATE DETAILS	
CITY OF CHICAGO DEPT. OF STREETS AND SANITATION DIVISION OF ELECTRICAL ENGINEERING	
REVISED	DATE
A	5-27-76
B	
C	
D	
E	
F	
G	
DRAWN: J. WAHLFELDT CHECKED: U. BORE ENGINEER: J. BORE DRG. NO. 659 DATE: 10-25-68	



DRG.	MATERIAL	CODE	SIZE	Qty.
	FORM FOR MANHOLE	11-6014-000	3x4x4	1
	CONDUIT END BELL	11-6418-000	AS REQ.	1
	TILE, SEWER	39-4038-3200	12"x24"	1
	SLAB BOLSTER		2"	20'
	BAR, REINFORCING	20-5472-3650	5/8" #5	54'
	TIE WIRE	13-2938-6106	#20GA	35'
7878	PULLING IRON	02-4483-6970	3/4"	2
	CONCRETE	05-3267-2940	3 CU. YDS.	
	SEWER BRICK	05-1452-9120	STD.	50
10792	GRATE FOR SUMP	02-4368-1100	15"	1
	GROUND ROD	02-7755-9200	2"x10"	1
	GROUND ROD CLAMP	02-2626-3240	3/4"	1
	CRUSHED STONE	05-9057-5471	3/4"	200
872	MANHOLE FRAME	02-4299-5524	24"	1
872	MANHOLE COVER	02-4574-5040	24"	1
	CONC. CHANNEL INSERT	02-4574-5040	3'	8

NOTES:  
 1. PRECAST MANHOLES MUST BE PROVIDED WITH CHANNEL INSERTS, PULLING IRONS, AND CONDUIT KNOCK-OUTS.  
 2. ALL CONCRETE MUST BE PORTLAND CEMENT CONCRETE MEETING DOT REQUIREMENTS FOR CLASS PC CONCRETE FOR PRE-CAST STRUCTURES, OR CLASS S1 CONCRETE FOR CAST-IN-PLACE STRUCTURES.  
 3. REINFORCING BARS MUST MEET ASTM A615 GRADE 60.

8/21/02	SUPERCEDES DWG. 730 DATED JAN 12, 1996
1/12/96	SUPERCEDES DWG. 730 DATED NOV. 21, 1973
DATE	REVISION
3' x 4' x 4' CONCRETE MANHOLE WITH 24" FRAME AND COVER	
CITY OF CHICAGO DEPT. OF STREETS AND SANITATION DIVISION OF ELECTRICAL ENGINEERING	
DRYERMAN: S. GARNSEY	ENGINEER: S. GARNSEY
ELECTRICAL DESIGNER: F. CARTER	ENGINEER: S. GARNSEY
ENGINEER: S. GARNSEY	ENGINEER: S. GARNSEY
DEPUTY ENGINEER: S. GARNSEY	ENGINEER: S. GARNSEY
DATE: 8/21/02	DRAWING NO. 730

\* CITY OF CHICAGO BUREAU OF ELECTRICITY STANDARD DRAWINGS ARE PROVIDED IN ENGLISH UNITS.

SINGH SINGH & ASSOCIATES, INC.  
CONSULTING ENGINEERS

REVISIONS	
NAME	DATE

ILLINOIS DEPARTMENT OF TRANSPORTATION  
 115TH STREET OVER I-57  
 CITY OF CHICAGO  
 BUREAU OF ELECTRICITY  
 STANDARD DRAWINGS

SCALE: NONE  
 DATE: 01-16-09  
 DRAWN BY: VG  
 CHECKED BY: PV