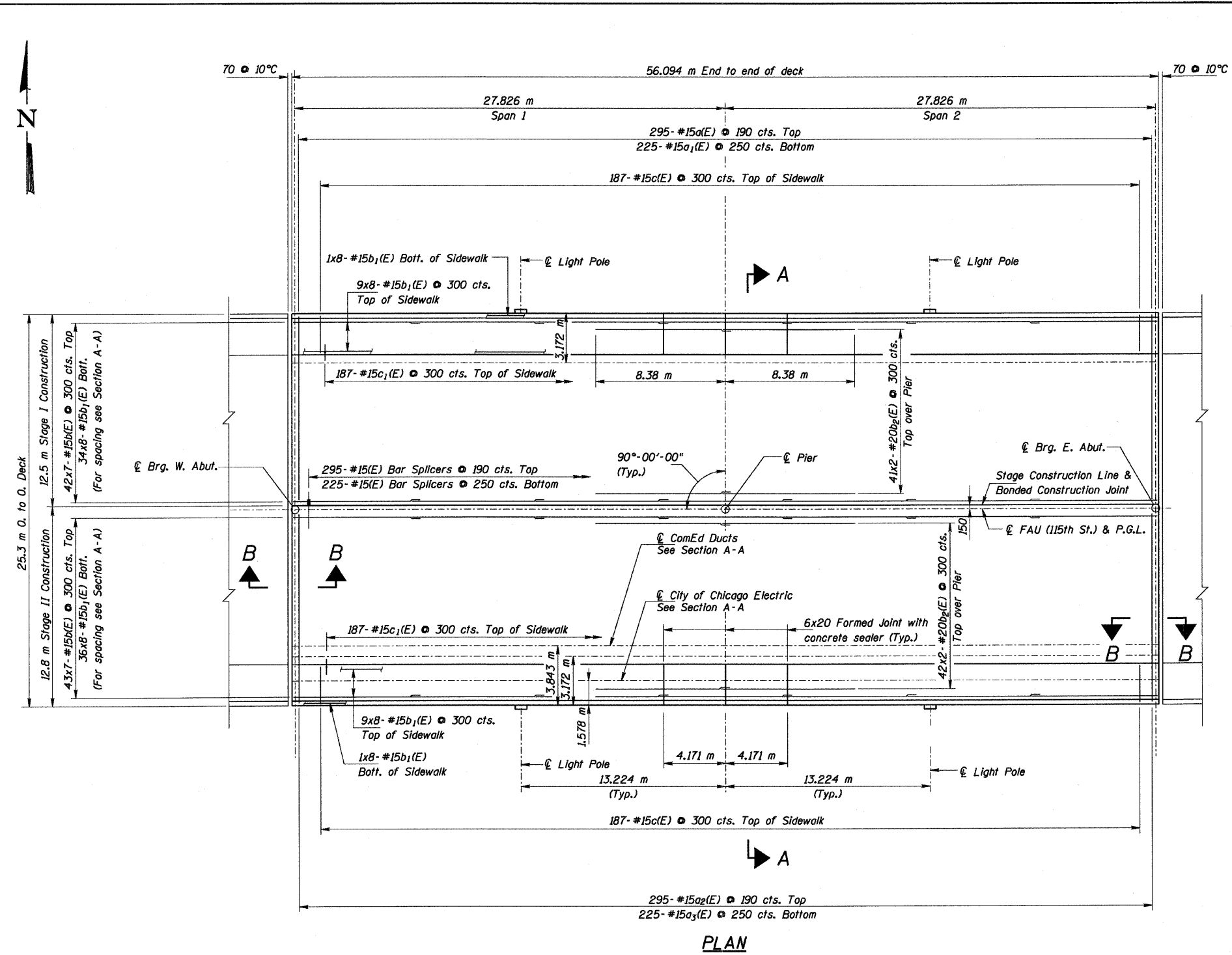


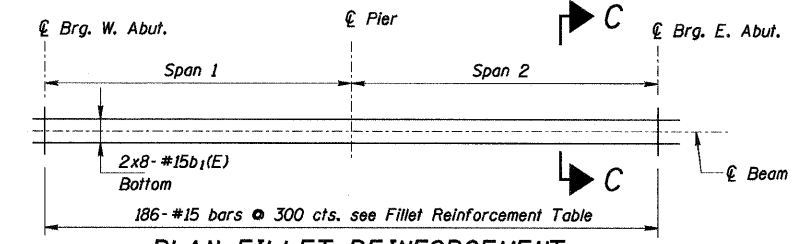
ROUTE NO.	SECTION	COUNTY	TOTAL SHEETS	SHEET NO.	SHEET NO. 57
FAU 1584		COOK	119	80	S23 SHEETS
FED. ROAD DIST. NO. 7	ILLINOIS	FED. ROAD PROJECT	CONTRACT 60371		



**PLAN**

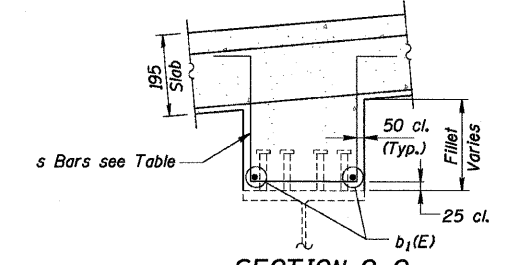
Minimum Bar Laps  
 #15 Bars = 640  
 #20 Bars = 790

Notes:  
 Bars indicated thus 20x3-#15 etc. indicates 20 lines of bars with 3 lengths per line.  
 All dimensions are in millimeters (mm) except as noted.  
 See Sheet S8 of S23 for Sections A-A & B-B.  
 See Sheet S10 of S23 for parapet reinforcement and Bill of Materials.



**PLAN-FILLET REINFORCEMENT**

Note:  
 Fillet s bars are placed from West Abutment to Pier 1 and from Pier 1 to East Abutment in the order shown in the Table.



**SECTION C-C**

**FILLET REINFORCEMENT TABLE**

Beam	Location	
	Span 1	Span 2
1	20- #15s1(E), 49- #15s1(E) & 24- #15s1(E)	93- #15s1(E)
2	20- #15s2(E), 49- #15s3(E) & 24- #15s2(E)	93- #15s2(E)
3	20- #15s4(E), 49- #15s5(E) & 24- #15s4(E)	93- #15s4(E)
4	20- #15s6(E), 49- #15s7(E) & 24- #15s9(E)	93- #15s9(E)
5	20- #15s9(E), 49- #15s10(E) & 24- #15s9(E)	30- #15s9(E), 50- #15s3(E) & 13- #15s9(E)
6	20- #15s9(E), 49- #15s4(E) & 24- #15s5(E)	30- #15s9(E), 50- #15s3(E) & 13- #15s9(E)
7	50- #15s9(E), 37- #15s4(E) & 6- #15s5(E)	30- #15s5(E), 50- #15s8(E) & 13- #15s9(E)
8	69- #15s1(E), 11- #15s4(E) & 13- #15s9(E)	30- #15s5(E), 40- #15s8(E) & 23- #15s1(E)
9	20- #15s9(E), 49- #15s10(E) & 24- #15s9(E)	30- #15s9(E), 50- #15s3(E) & 13- #15s9(E)
10	20- #15s9(E), 49- #15s10(E) & 24- #15s9(E)	30- #15s9(E), 50- #15s3(E) & 13- #15s9(E)
11	20- #15s6(E), 49- #15s10(E) & 24- #15s6(E)	47- #15s6(E), 30- #15s10(E) & 16- #15s6(E)
12	20- #15s4(E), 49- #15s3(E) & 24- #15s4(E)	50- #15s4(E), 20- #15s3(E) & 23- #15s4(E)
13	20- #15s11(E), 49- #15s3(E) & 24- #15s11(E)	70- #15s11(E) & 23- #15s2(E)
14	20- #15s1(E), 49- #15s1(E) & 24- #15s1(E)	93- #15s5(E)

REVISIONS	
NAME	DATE

ILLINOIS DEPARTMENT OF TRANSPORTATION  
 115 TH. STREET OVER FAI 57  
 FAU RTE. 1584 SEC. 068-1919.2-CF  
 COOK COUNTY  
 STATION 2+382.915  
 STRUCTURE NO. 016-2037  
**SUPERSTRUCTURE**  
 DRAWN BY KAC  
 CHECKED BY FRB/DGS  
 DATE: JANUARY 16, 2009

**COLLINS ENGINEERS**  
 123 North Wacker Drive  
 Suite 300  
 Chicago, IL 60606  
 (312) 704-9300  
 www.collinsengr.com  
 ILLINOIS PROFESSIONAL DESIGN FIRM LICENSE NO. 184-080993