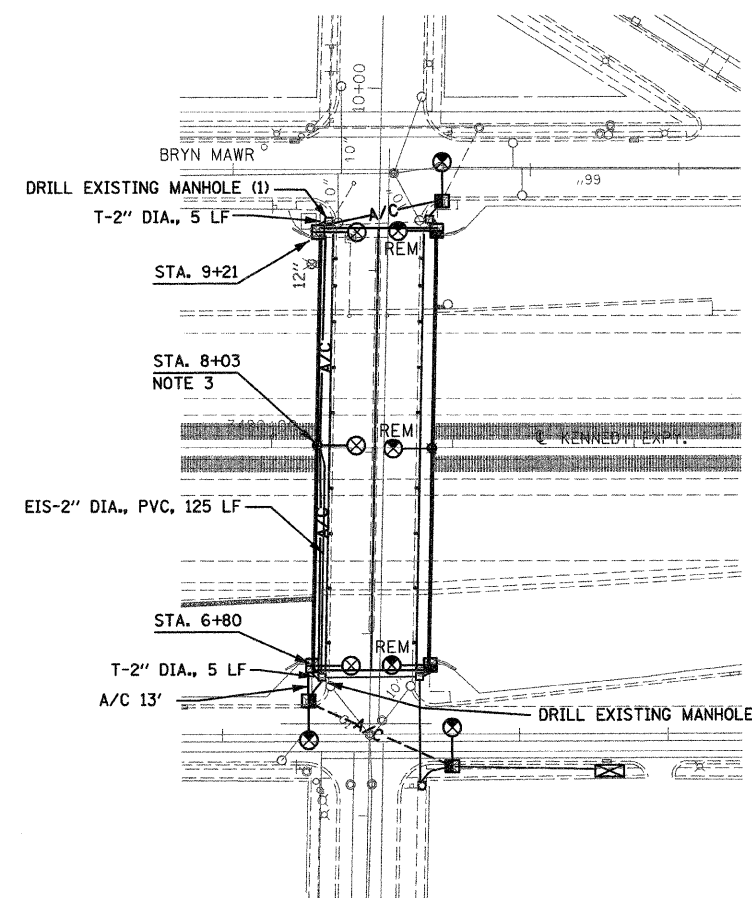
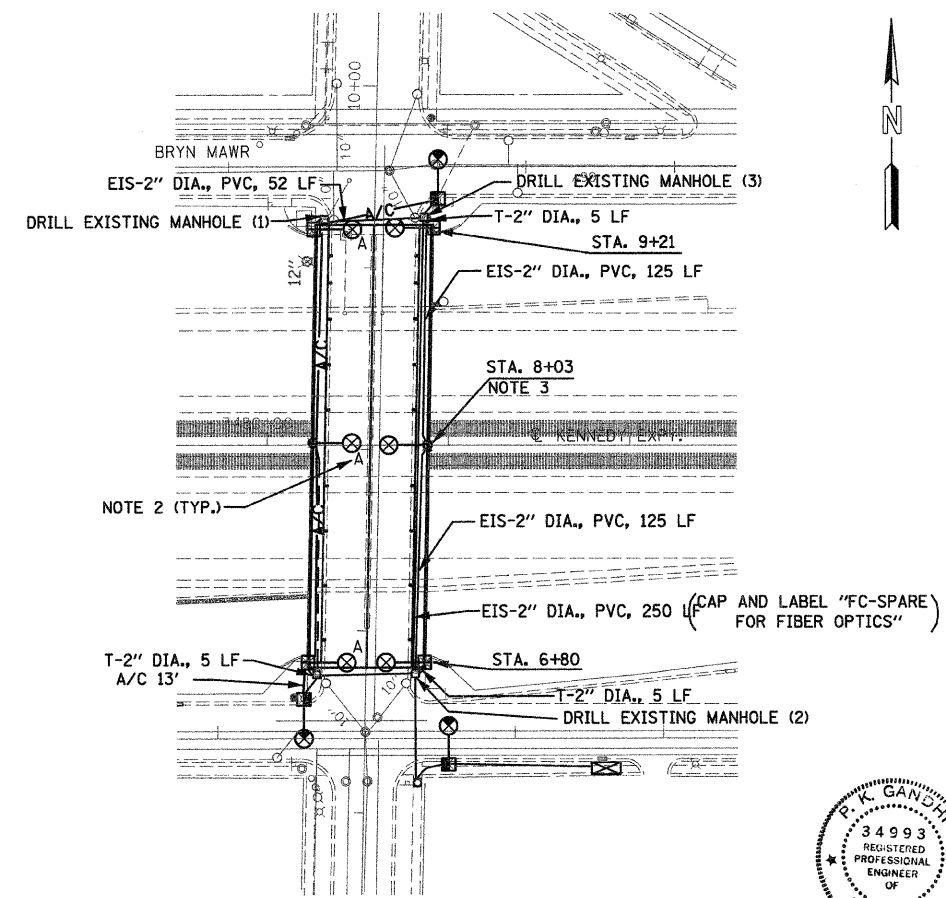


LIGHTING STAGE I



LIGHTING STAGE II



LIGHTING STAGE III

LEGEND

- PROPOSED LIGHTING UNIT, 35 FT. MOUNTING HEIGHT, 12 FT. MAST ARM, 310 WATT HIGH PRESSURE SODIUM LUMINAIRE
- EXISTING LIGHTING UNIT, 35 FT. MOUNTING HEIGHT, 12 FT. MAST ARM, 310 WATT HIGH PRESSURE SODIUM LUMINAIRE
- EXISTING LIGHTING UNIT TO BE REMOVED, 35 FT. MOUNTING HEIGHT, 12 FT. MAST ARM, 310 WATT HIGH PRESSURE SODIUM LUMINAIRE
- AERIAL CABLE, STREET LIGHT, 2 1/C #6, HDNS
- RIGID STEEL CONDUIT (R.S.C.): THE DIAMETER AND LENGTH AS INDICATED ON THE CONTRACT DRAWINGS. PUSHED (P), TRENCHED (T), OR EMBEDDED IN STRUCTURE (EIS), AS INDICATED ON THE CONTRACT DRAWINGS.
- EXISTING CONDUIT: THE DIAMETER AND LENGTH AS INDICATED ON THE CONTRACT DRAWINGS.
- MINIMUM 6 FT. FROM FACE OF THE CURB TO FACE OF POLE AND/OR AS DIRECTED BY THE ENGINEER.
- EXISTING STREET LIGHTING CONTROLLER
- PROPOSED STREET LIGHTING CONTROLLER
- EXISTING CITY HANDHOLE
- PROPOSED POLE, CITY STEEL, ANCHOR BASE, 32'-6", 7 GA., AND FND. WITH 1 1/2" B.C. AND 1" ANCHOR RODS DWG. #762.
- EXISTING POLE, CITY STEEL, ANCHOR BASE, 32'-6", 7 GA., AND FND. WITH 1 1/2" B.C. AND 1" ANCHOR RODS DWG. #762.
- EXISTING MANHOLE, CITY 3'X4'X4' DWG. #729 OR 730; 4'X6'X6' DWG. #732 OR 733

STREET LIGHTING SCHEDULE OF QUANTITIES

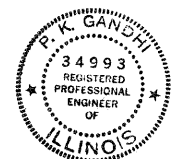
DESIGNATION	UNIT	QUANTITY
DRILL EXISTING MANHOLE OR HANDHOLE	EACH	8
CONCRETE FOUNDATION 24" DIA.	FOOT	36
POLE, STEEL, ANCHOR BASE, 10" DIA., 7-GAUGE, 34'-6"	EACH	4
MAST ARM, STEEL, STREET LIGHTING, 12 FT.	EACH	6
FUSE, IN-LINE, 10 AMP	EACH	12
CABLE IN CONDUIT, TRIPLEX, 2-1/C NO. 6 AND 1-1/C NO. 8 GROUND	FOOT	558
GALVANIZED STEEL CONDUIT IN TRENCH, 2"	FOOT	20
TRENCH AND BACKFILL WITH SCREENINGS AND/OR SAND	FOOT	20
REMOVE EXISTING STREET LIGHTING EQUIPMENT	L SUM	1
CONDUIT EMBEDDED IN STRUCTURE, 2" DIA., PVC (SCHEDULE 40)	FOOT	677
LUMINAIRE, STREET LIGHTING, HIGH PRESSURE SODIUM VAPOR, 310 WATT, 240 VOLT	EACH	6
POLE, STEEL, ANCHOR BASE, 8-1/2" DIAMETER, 7 GAUGE, 32' - 6"	EACH	2

GENERAL NOTES:

- LIGHTING SHALL BE MAINTAINED AT LEAST ON ONE SIDE OF THE BRIDGE AT ALL TIMES.

INSTALLATION NOTES:

- NOTE 1 INSTALL AERIAL CABLE, AS NEEDED, FOR MAINTAINING EXISTING LIGHTING UNTIL THE PROPOSED LIGHTING IS FULLY OPERATIONAL. THIS ITEM WILL NOT BE PAID FOR SEPARATELY BUT IS INCIDENTAL TO "REMOVE EXISTING STREET LIGHTING EQUIPMENT".
- NOTE 2 'A' NEXT TO THE POLE AND LUMINAIRE INDICATES THAT THESE WERE INSTALLED IN LIGHTING STAGE 2.
- NOTE 3 THE CONTRACTOR SHALL BUILD BASE FOR 32'-6" TALL STEEL POLE AT THE LOCATIONS SHOWN ON THE PLAN AND AS DIRECTED BY THE ENGINEER, WITH 60" LONG & 1" DIA. ANCHOR BOLTS SET IN 11-1/2" DIA. BOLT CIRCLE AND PROPERLY ANCHORED IN THE BRIDGE STRUCTURE. (REFER TO BOE STD. DWG. 818, 837). ALSO SEE STRUCTURAL BRIDGE PLANS AND DETAILS.



*D.P. Gandhi, 1/14/2009*  
*Exp. 11/30/2009*

ILLINOIS DEPARTMENT OF TRANSPORTATION

STREET LIGHTING  
 SAYRE AVENUE OVER  
 INTERSTATE 90 (KENNEDY EXPRESSWAY)

REVISIONS	
NAME	DATE

SCALE: 1"=50'  
 DATE: 2/1/2008  
 DRAWN BY: BC/MAE  
 CHECKED BY: MK

A PROJECTS PROJECTS 2007/VeriTek/Engineer/007/Design/3000/01/11/Stage and Details of T-Sayre Lighting/001.dwg  
 1/14/2009

**GO** GANDHI AND ASSOCIATES, INC.  
 ENGINEERS AND PLANNERS  
 6035 N. NORTHWEST HIGHWAY  
 SUITE 308  
 CHICAGO, ILLINOIS 60631 TEL. (773) 774-5900