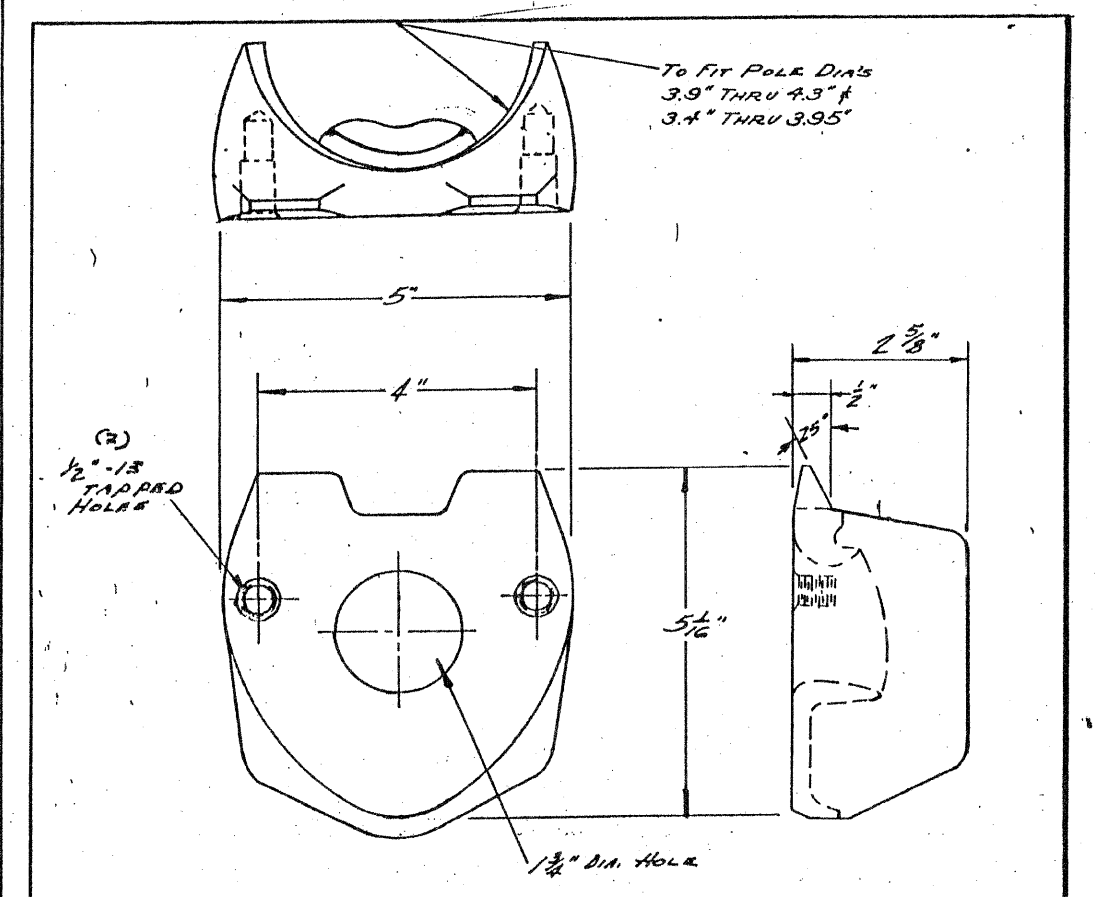


CABLE TRENCH                      CONDUIT TRENCH

**NOTE**  
 EXCESS SOIL FROM TRENCH TO BE COMPLETELY REMOVED FROM SITE AS SOON AS PRACTICABLE.  
 BLACK DIRT TO BE TAMPED & THOROUGHLY COMPACTED AS SHOWN.

STANDARD METHOD FOR BACKFILLING CABLE & CONDUIT TRENCHES IN SODDED PARKWAY & LAWNS

CITY OF CHICAGO			
DEPT. OF STREETS & SANITATION			
DIVISION OF ELECTRICAL ENGINEERING			
REVISION	DRAWN	CHECKED	ENGINEER
A	W. E. HAEP	M. J. Kline	J. O'CONNOR
B			
C			
D			
E			
F			
G			
H			
SIZE: 8 1/2" x 14"		SCALE: 1/4"	DATE: 7-14-61



MATERIAL: CAST STEEL

A J.O.C. MATERIAL NOTE ADDED.	
2 BOLT MAST ARM ATTACHMENT POLE PLATE DETAILS	
REVISED	
A	5-27-76
CITY OF CHICAGO DEPT. OF STREETS AND SANITATION DIVISION OF ELECTRICAL ENGINEERING	
DRAWN	CHECKED
J. WAHLFELDT	J. BORE
ENGINEER	J. BORE
DRG. NO. 659	
DATE 10-25-60	

REVISIONS	
NAME	DATE

ILLINOIS DEPARTMENT OF TRANSPORTATION

CITY OF CHICAGO  
 BUREAU OF ELECTRICITY  
 LIGHTING STANDARDS  
 SAYRE AVENUE OVER  
 INTERSTATE 90 (KENNEDY EXPRESSWAY)

SCALE: NONE                      DRAWN BY: MAE  
 DATE: 2/1/2008                      CHECKED BY: MK/PKG