

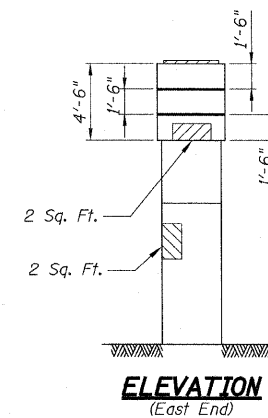
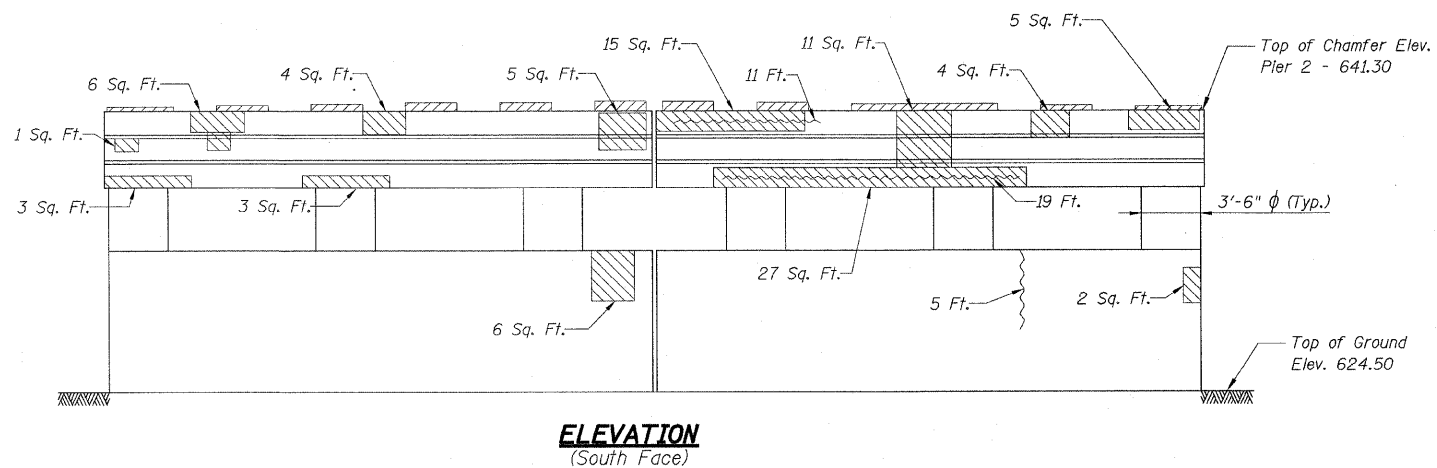
- NOTE:**
- Pier repair operations shall begin after removal of the existing superstructure and shall be completed prior to erection of the beams.
 - Quantities shown in the Bill of Material have been increased above the theoretical values to allow for additional repairs authorized by the Engineer.

- LEGEND:**
- Indicates limits of Structural Repair of Concrete (depth equal to or less than 5")
 - Indicates limits of epoxy crack Injection
 - Indicates areas of concrete removal

BILL OF MATERIAL

ITEM	UNIT	QUANTITY
* Polymer Modified Portland Cement Mortar	Sq. Ft.	20
* Structural Repair of Concrete (Depth Equal to or Less than 5")	Sq. Ft.	160
* Structural Repair of Concrete (Depth Greater than 5")	Sq. Ft.	100
Epoxy Crack Injection	Foot	40.0
Concrete Removal	Cu. Yd.	1.6

* See Special Provisions



REVISIONS	
NAME	DATE

ILLINOIS DEPARTMENT OF TRANSPORTATION
PIER 2 REPAIR
 FA ROUTE 173 (SAYRE AVENUE) OVER
 INTERSTATE 90 (KENNEDY EXPRESSWAY)
 COOK COUNTY STATION 8+02.48
 SECTION 267-1414-15D
 STRUCTURE NO. 016-1104
 SCALE: NONE DRAWN BY: R. Clinton
 DATE: DEC. 2007 CHECKED BY: G. Hatlestad