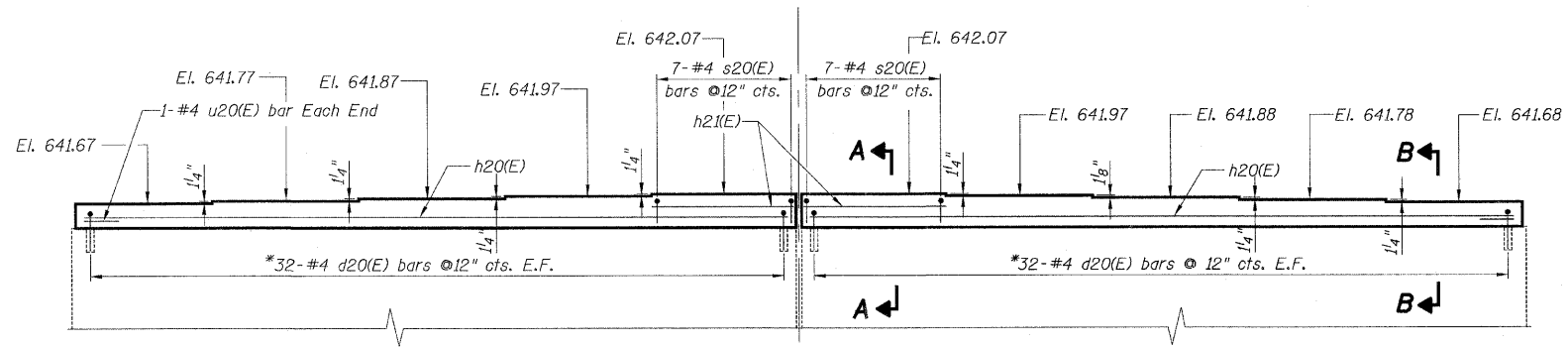
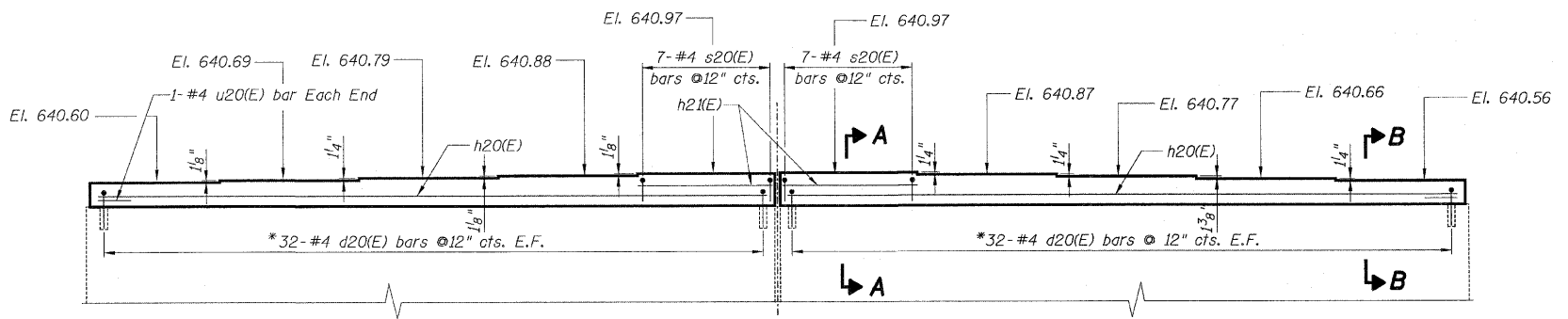


PLAN



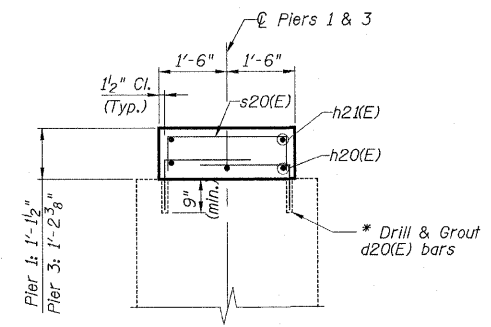
ELEVATION PIER 1
(Looking North)



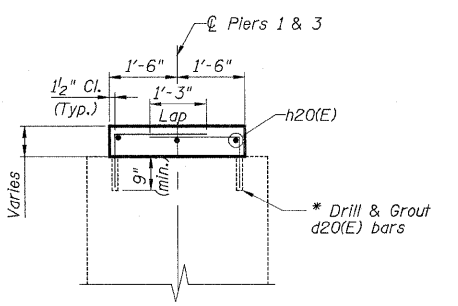
ELEVATION PIER 3
(Looking North)

* Epoxy grout d20(E) bars in 9" min. drilled holes according to Section 584 of the Standard Specifications.

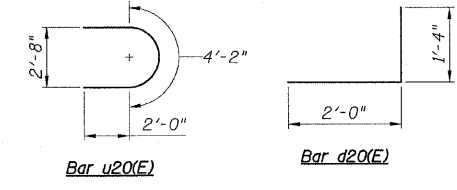
Notes:
 Space reinforcement in cap to miss anchor bolts.
 For Anchor Bolt Installation see Sheet S16.
 For Pier Repair and Concrete Removal see Sheets S22 & S23.
 All edges shall have a standard 3/4" chamfer except as noted.



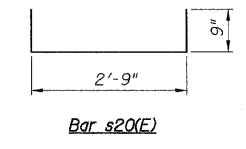
SECTION A-A



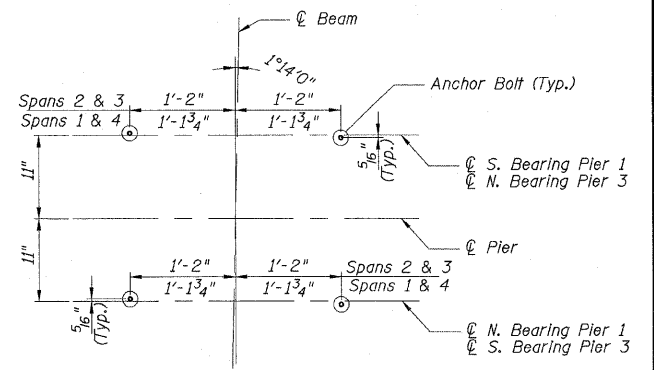
SECTION B-B



Bar u20(E) Bar d20(E)



Bar s20(E)



ANCHOR BOLT LOCATION

PIER 1 - BILL OF MATERIAL

Bar	No.	Size	Length	Shape
d20(E)	128	4	3'-4"	□
h20(E)	6	5	31'-10"	—
h21(E)	4	5	6'-1"	—
s20(E)	14	4	4'-3"	□
u20(E)	2	4	8'-2"	⌋
Concrete Structures			Cu. Yd.	6.7
Reinforcement Bars, Epoxy Coated			Pound	560

PIER 3 - BILL OF MATERIAL

Bar	No.	Size	Length	Shape
d20(E)	128	4	3'-4"	□
h20(E)	6	5	31'-10"	—
h21(E)	4	5	6'-1"	—
s20(E)	14	4	4'-3"	□
u20(E)	2	4	8'-2"	⌋
Concrete Structures			Cu. Yd.	7.3
Reinforcement Bars, Epoxy Coated			Pound	560

REVISIONS	
NAME	DATE

ILLINOIS DEPARTMENT OF TRANSPORTATION
 PIERS 1 & 3 REHABILITATION
 FA ROUTE 173 (SAYRE AVENUE) OVER
 INTERSTATE 90 (KENNEDY EXPRESSWAY)
 COOK COUNTY STATION 8+02.48
 SECTION 267-1414-15D
 STRUCTURE NO. 016-1104
 SCALE: NONE DRAWN BY: R. Clinton
 DATE: DEC. 2007 CHECKED BY: R. Kaye

