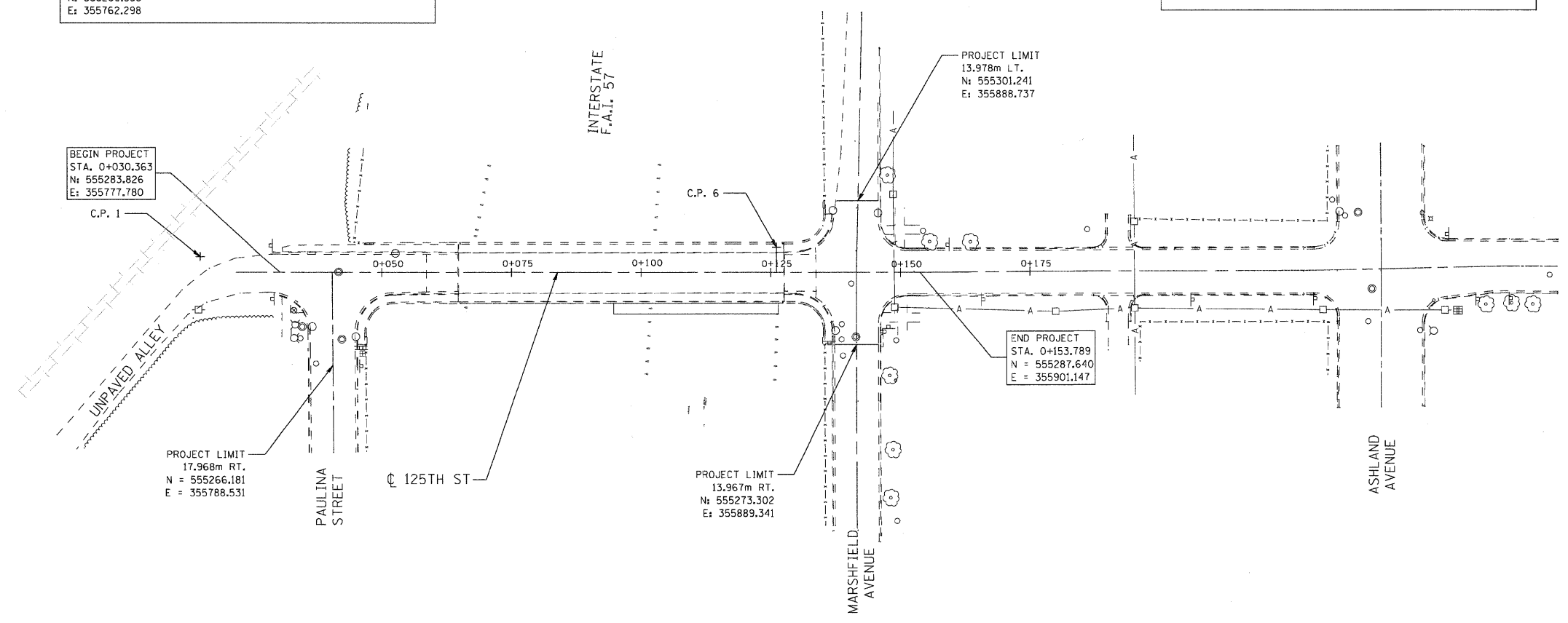
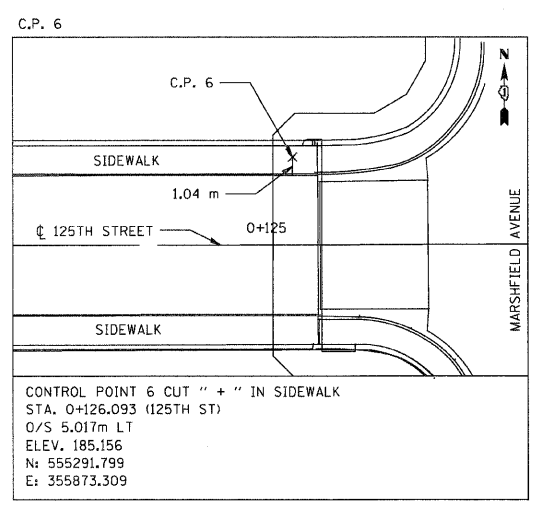
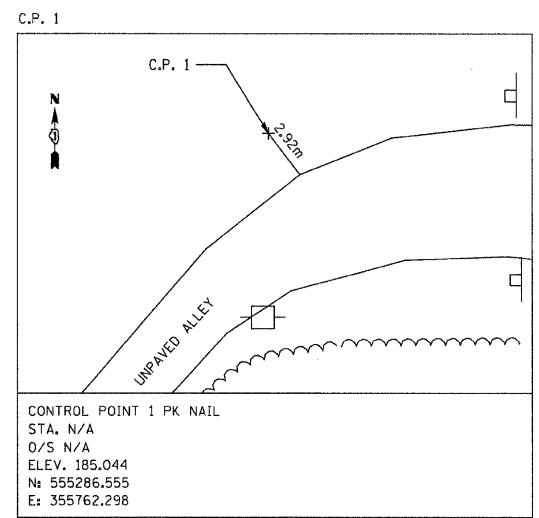


**BENCHMARKS**  
 BM 101  
 ELEV. 179.294  
 FOUND CUT SQUARE ON CENTER PIER  
 NEAR CENTERLINE OF I-57



FILE NAME = m:\proj\3183\125th\design\misc\Sheets\3183-125th-alignmen.txd

**Ciorba Group, Inc.**  
 CONSULTING ENGINEERS  
 5507 North Cumberland Avenue, Suite 402  
 Chicago, Illinois 60656  
 Tel. 773.775.4009 Fax 773.775.4014

USER NAME = dmorris	DESIGNED - WBL	REVISED -
PLOT SCALE = 0.500 m / MM.	DRAWN - WBL	REVISED -
PLOT DATE = 1/16/2009	CHECKED - MJL	REVISED -
	DATE - 1/16/2009	REVISED -

**STATE OF ILLINOIS  
 DEPARTMENT OF TRANSPORTATION**

**FAI 57 / INTERSTATE 57  
 125TH STREET OVER I-57  
 ALIGNMENT, TIES, AND BENCHMARKS**

SCALE: SHEET NO. OF SHEETS STA. TO STA.

F.A.I. RTE.	SECTION	COUNTY	TOTAL SHEETS	SHEET NO.
57	1818.3B-R	COOK	58	7
CONTRACT NO. 60862				
FED. ROAD DIST. NO. ILLINOIS FED. AID PROJECT				