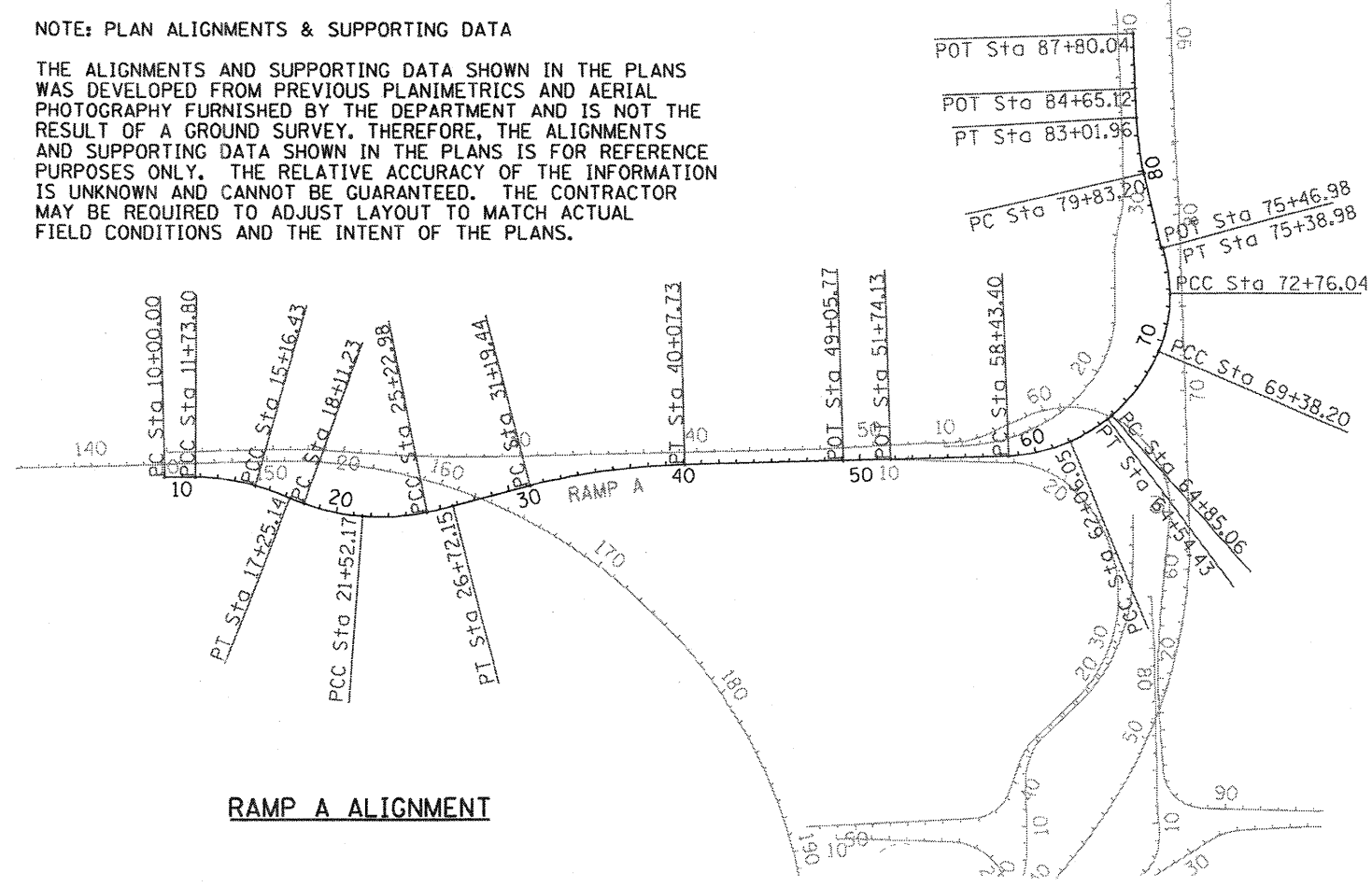
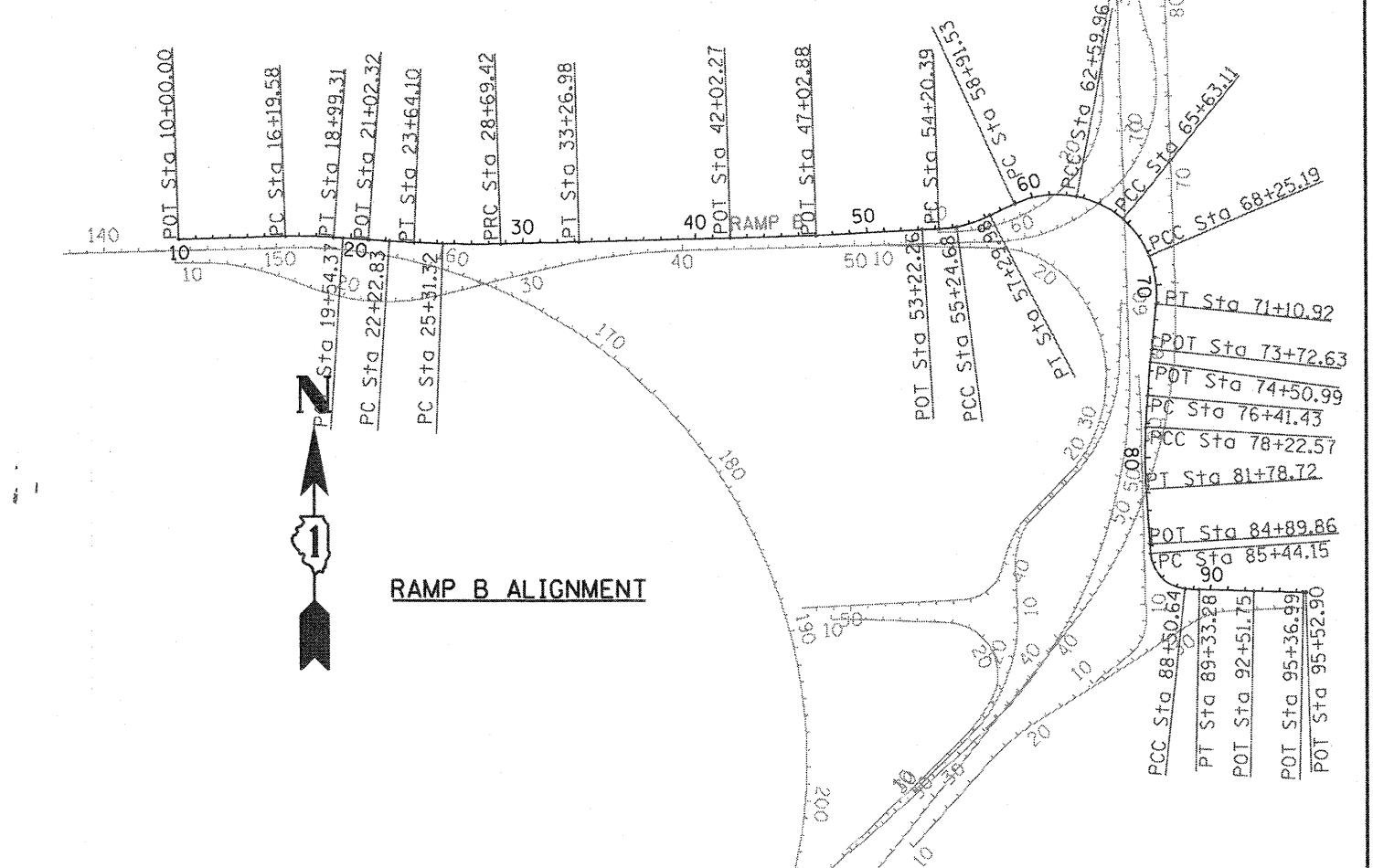


NOTE: PLAN ALIGNMENTS & SUPPORTING DATA

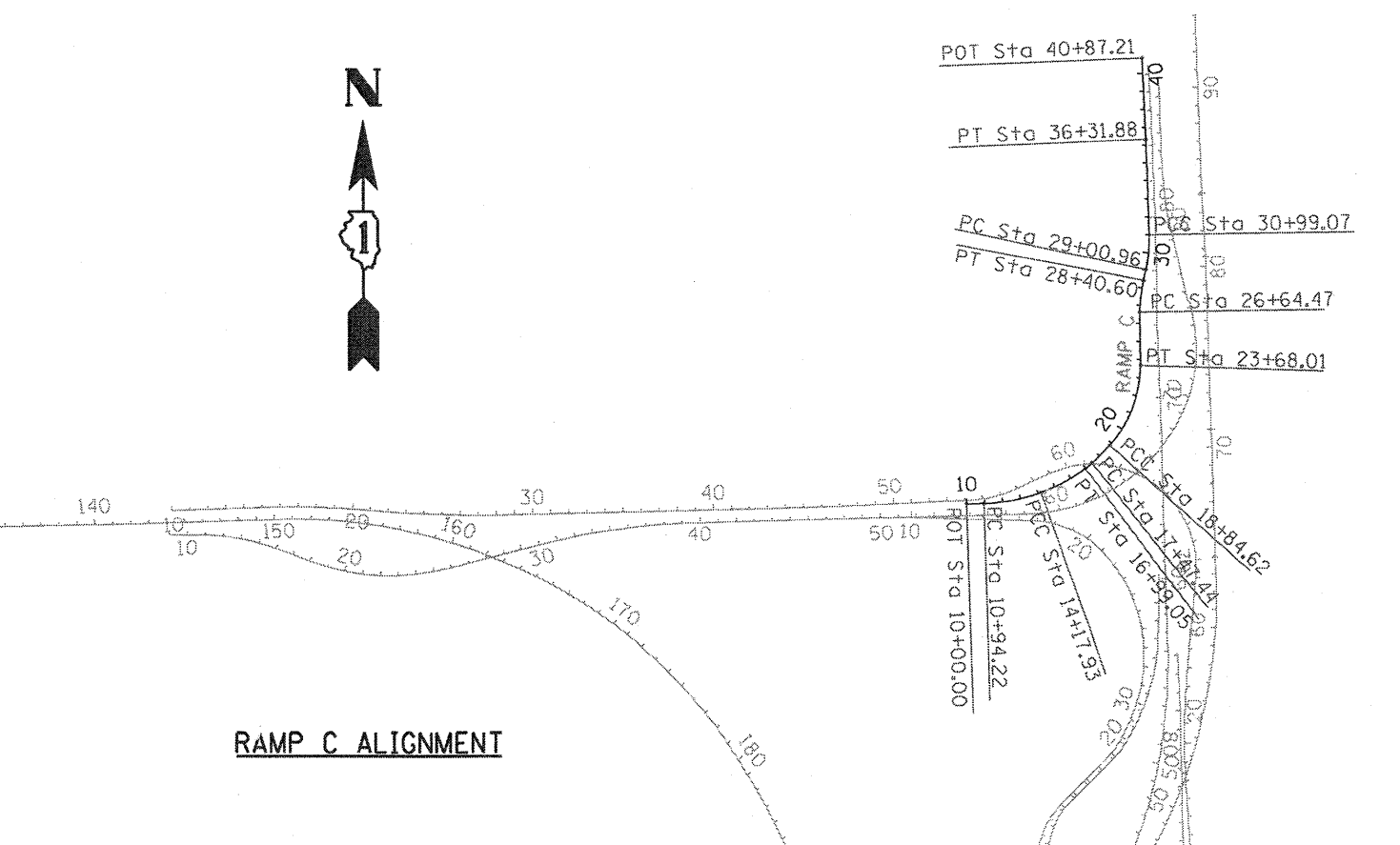
THE ALIGNMENTS AND SUPPORTING DATA SHOWN IN THE PLANS WAS DEVELOPED FROM PREVIOUS PLANIMETRICS AND AERIAL PHOTOGRAPHY FURNISHED BY THE DEPARTMENT AND IS NOT THE RESULT OF A GROUND SURVEY. THEREFORE, THE ALIGNMENTS AND SUPPORTING DATA SHOWN IN THE PLANS IS FOR REFERENCE PURPOSES ONLY. THE RELATIVE ACCURACY OF THE INFORMATION IS UNKNOWN AND CANNOT BE GUARANTEED. THE CONTRACTOR MAY BE REQUIRED TO ADJUST LAYOUT TO MATCH ACTUAL FIELD CONDITIONS AND THE INTENT OF THE PLANS.



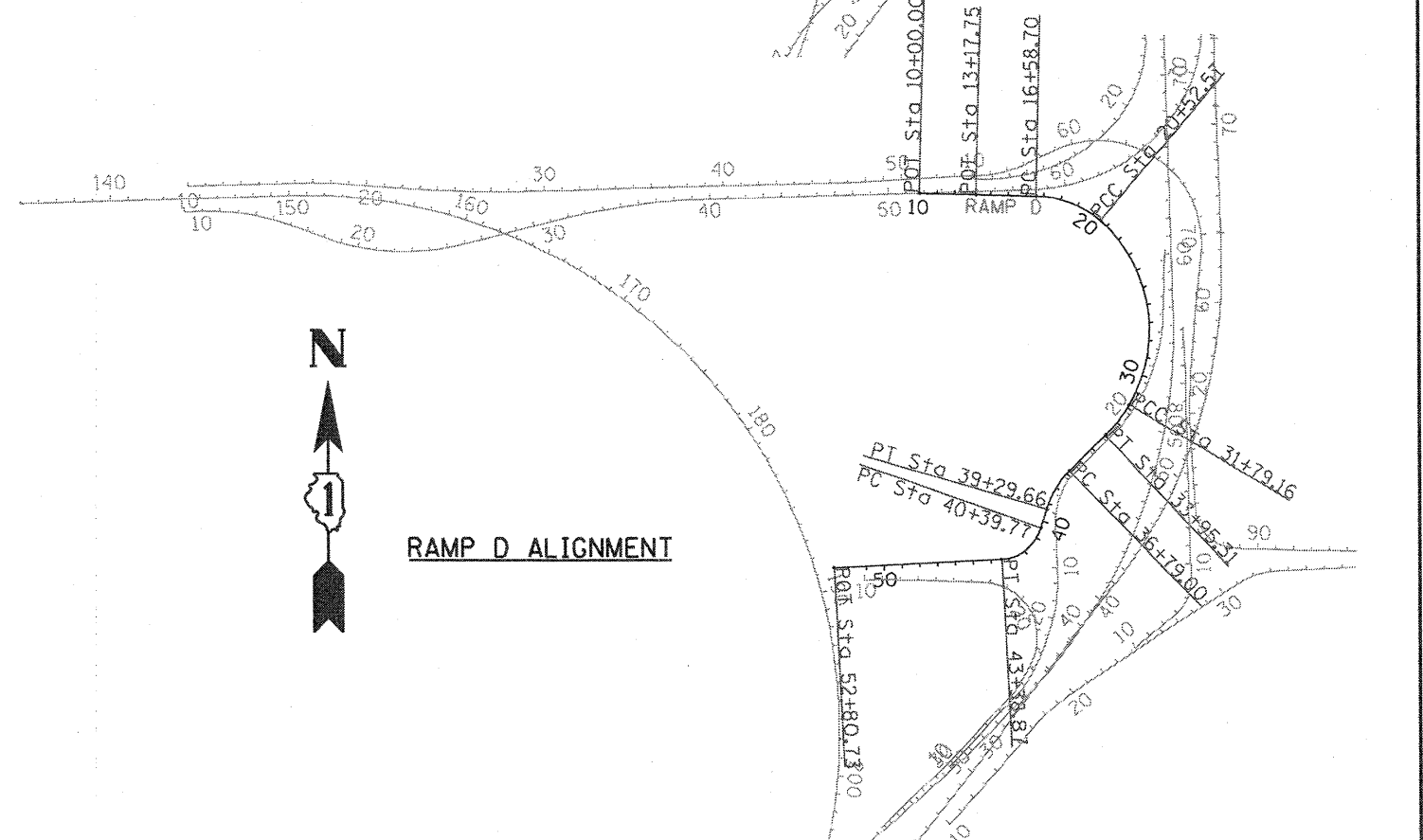
RAMP A ALIGNMENT



RAMP B ALIGNMENT



RAMP C ALIGNMENT



RAMP D ALIGNMENT

FILE NAME #FILE#	DESIGNED -	REVISED -	STATE OF ILLINOIS DEPARTMENT OF TRANSPORTATION	BISHOP FORD EXPRESSWAY (I-94) ALIGNMENTS		F.A.I. RTE.	SECTION	COUNTY	TOTAL SHEETS	SHEET NO.
	DRAWN - DW/ZR	REVISED -		94	(0312-708W, ETC. & 1315RS-4	COOK	167	24		
	CHECKED - ES	REVISED -		SCALE: N/A	SHEET NO. 4 OF 18 SHEETS	STA.	TO STA.	CONTRACT NO. 60C08		
	DATE - 01/29/2009	REVISED -					FED. ROAD DIST. NO. [ILLINOIS] FED. AID PROJECT			