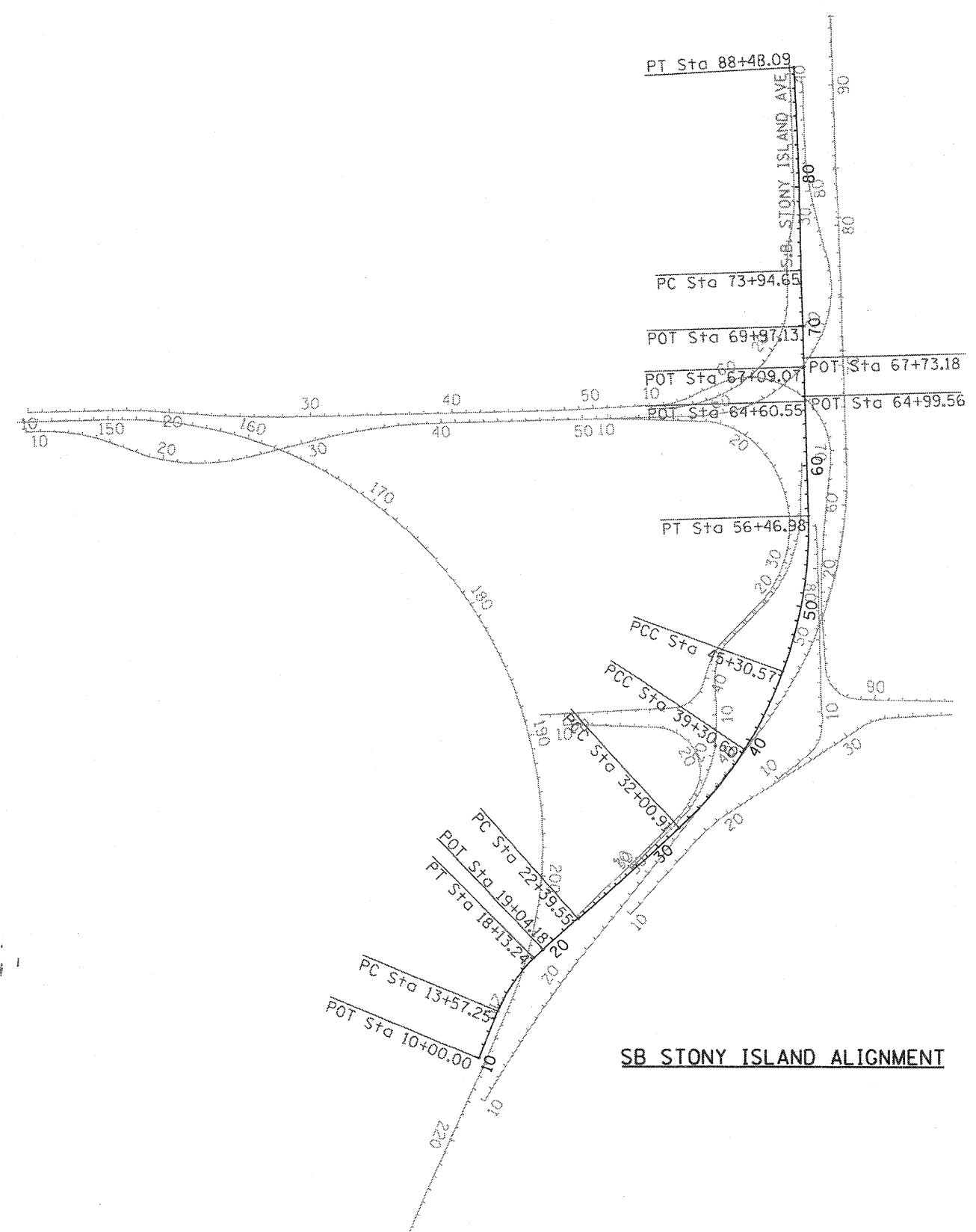
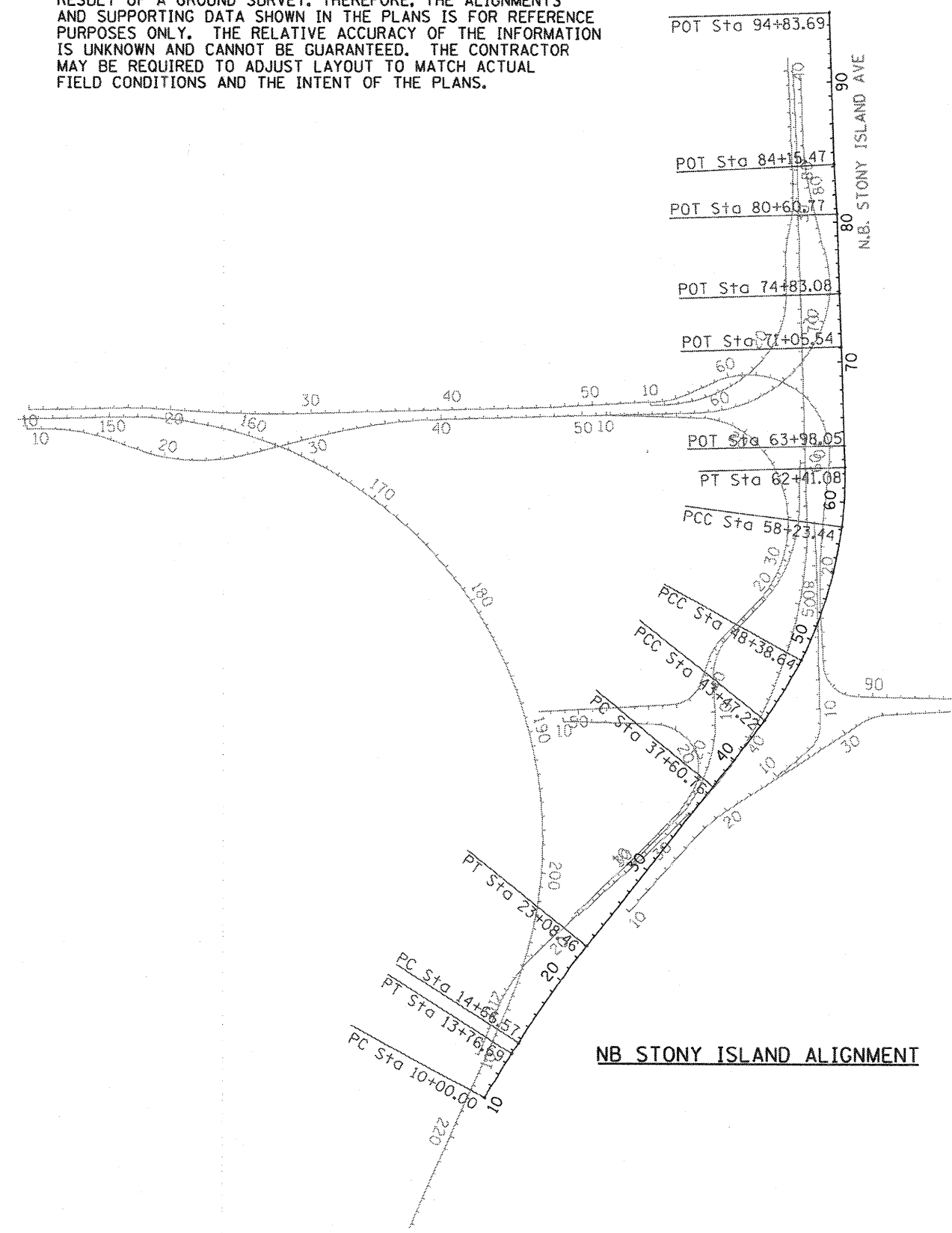


**NOTE: PLAN ALIGNMENTS & SUPPORTING DATA**

THE ALIGNMENTS AND SUPPORTING DATA SHOWN IN THE PLANS WAS DEVELOPED FROM PREVIOUS PLANIMETRICS AND AERIAL PHOTOGRAPHY FURNISHED BY THE DEPARTMENT AND IS NOT THE RESULT OF A GROUND SURVEY. THEREFORE, THE ALIGNMENTS AND SUPPORTING DATA SHOWN IN THE PLANS IS FOR REFERENCE PURPOSES ONLY. THE RELATIVE ACCURACY OF THE INFORMATION IS UNKNOWN AND CANNOT BE GUARANTEED. THE CONTRACTOR MAY BE REQUIRED TO ADJUST LAYOUT TO MATCH ACTUAL FIELD CONDITIONS AND THE INTENT OF THE PLANS.



FILE NAME =	
D168C08-824-ATB.dgn	

DESIGNED -	REVISED -
DRAWN - DW/ZR	REVISED -
CHECKED - ES	REVISED -
DATE - 01/29/2009	REVISED -

**STATE OF ILLINOIS  
DEPARTMENT OF TRANSPORTATION**

**BISHOP FORD EXPRESSWAY (I-94)  
ALIGNMENTS**

SCALE: N/A SHEET NO. 7 OF 18 SHEETS STA. TO STA.

F.A.I. RTE.	SECTION	COUNTY	TOTAL SHEETS	SHEET NO.
94	(0312-708W, ETC. & 1315)RS-4	COOK	167	27
FED. ROAD DIST. NO. ILLINOIS FED. AID PROJECT			CONTRACT NO. 60C08	