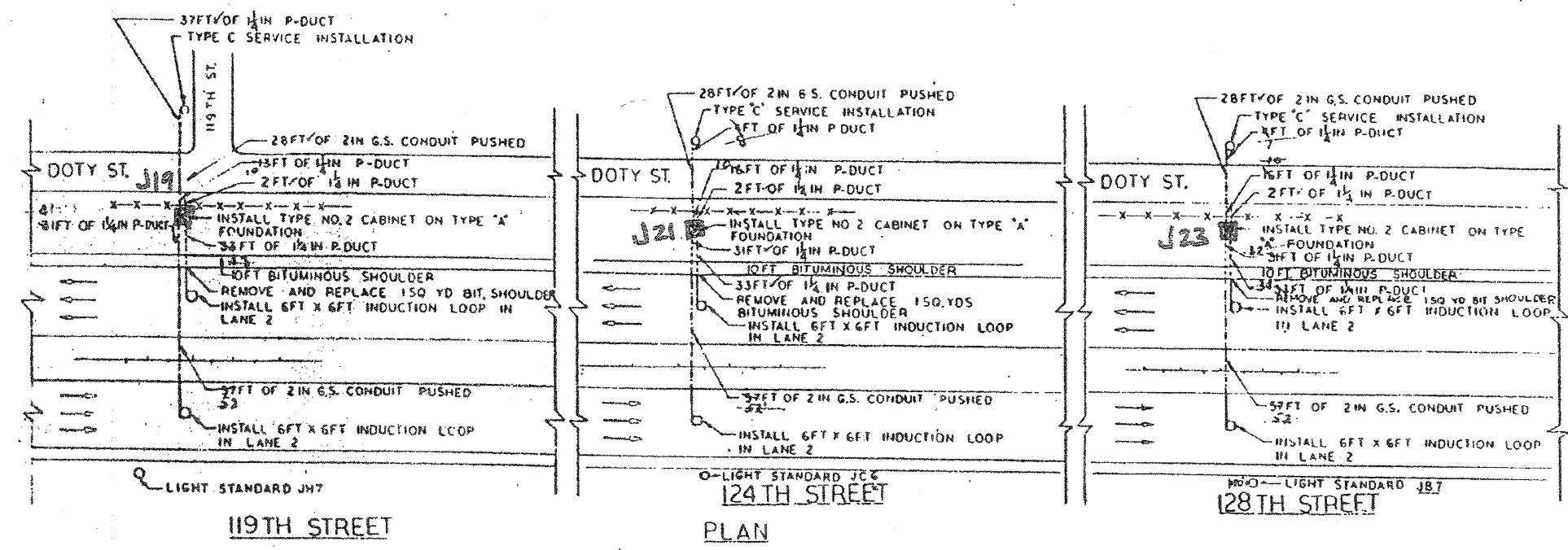


5A/6
0 50'

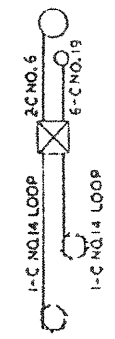
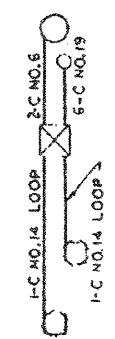
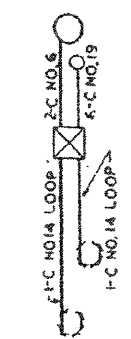
5B/12
0 24'



119TH STREET

PLAN

128TH STREET



WIRING DIAGRAM

- LEGEND
- INDUCTION LOOP
 - CABINET
 - ⊕ JUNCTION BOX
 - ⊙ SERVICE INSTALLATION
 - PULL POINT
 - ⊙ HANDHOLE
 - DUCT
 - CONDUIT
 - X-X- FENCE
 - ┌ GUARD RAIL

SCHEDULE OF QUANTITIES

169	174 LIN. FT.	ELECTRICAL CABLE IN CONDUIT, NO. 6, 2/C
170	846 LIN. FT.	ELECTRICAL CABLE IN CONDUIT, NO. 14, 3/C
21	30 LIN. FT.	ELECTRICAL CABLE IN CONDUIT, NO. 19, 6/C
	LIN. FT.	ELECTRICAL CABLE IN CONDUIT, NO. 19, 12/C
	LIN. FT.	G.S. CONDUIT IN TRENCH, 1-1/2"
	LIN. FT.	G.S. CONDUIT IN TRENCH, 2"
24C	244 LIN. FT.	G.S. CONDUIT, PUSHED, 2"
	LIN. FT.	G.S. CONDUIT ATTACHED TO STRUCTURE, 1-1/2"
	LIN. FT.	G.S. CONDUIT ATTACHED TO STRUCTURE, 2"
	LIN. FT.	INSTALL TELEPHONE DUCT
342	857 LIN. FT.	INSTALL POLYETHYLENE DUCT, 1-1/2"
	LIN. FT.	INSTALL POLYETHYLENE DUCT, 2"
	3 EACH	CONCRETE FOUNDATION, TYPE A
	EACH	CONCRETE FOUNDATION, TYPE B
	EACH	HEAVY DUTY HANDHOLE
	EACH	HANDHOLE
192	348 LIN. FT.	TRENCH AND BACKFILL
73	9 SQ. YD.	BITUMINOUS CONCRETE SURFACE REMOVAL AND REPLACEMENT SERVICE INSTALLATION, TYPE C
	3 EACH	CABINET HOUSING TO TRENCH, PEDESTAL MOUNTED, E.S.P. 1
	3 EACH	CABINET HOUSING EQUIPMENT, PEDESTAL MOUNTED, E.S.P. 2
	EACH	CABINET HOUSING EQUIPMENT, POLE MOUNTED, E.S.P. 1
	EACH	CABINET HOUSING EQUIPMENT, POLE MOUNTED, E.S.P. 2
	EACH	CABINET HOUSING EQUIPMENT, ATTACHED TO STRUCTURE, E.S.P. 1
	EACH	CABINET HOUSING EQUIPMENT, ATTACHED TO STRUCTURE, E.S.P. 2
246	866 LIN. FT.	INDUCTION LOOP
	6 EACH	TONE EQUIPMENT 3 FREQUENCY TRANSMITTER
	6 EACH	TONE EQUIPMENT 3 FREQUENCY RECEIVER
	EACH	TONE EQUIPMENT POWER SUPPLY
	3 EACH	TONE EQUIPMENT MOUNTING FRAME
	3 EACH	INDUCTION LOOP DETECTOR POWER SUPPLY
	6 EACH	INDUCTION LOOP DETECTOR SIGNAL UNIT

FOR INFORMATION ONLY

STATE OF ILLINOIS
DIVISION OF HIGHWAYS
CHICAGO AREA EXPRESSWAY SURVEILLANCE PROJECT

119TH 124TH AND 128TH STREET INSTALLATIONS

ROUTE NO.	SECTION	COUNTY	TOTAL SHEETS	SHEET NO.
141	1	COOK	17	12
DRAWN BY	SCALE	DATE	CHECKED BY	APPROVED
PSC	AS SHOWN	APR 11, 1972	ROB	JMCD