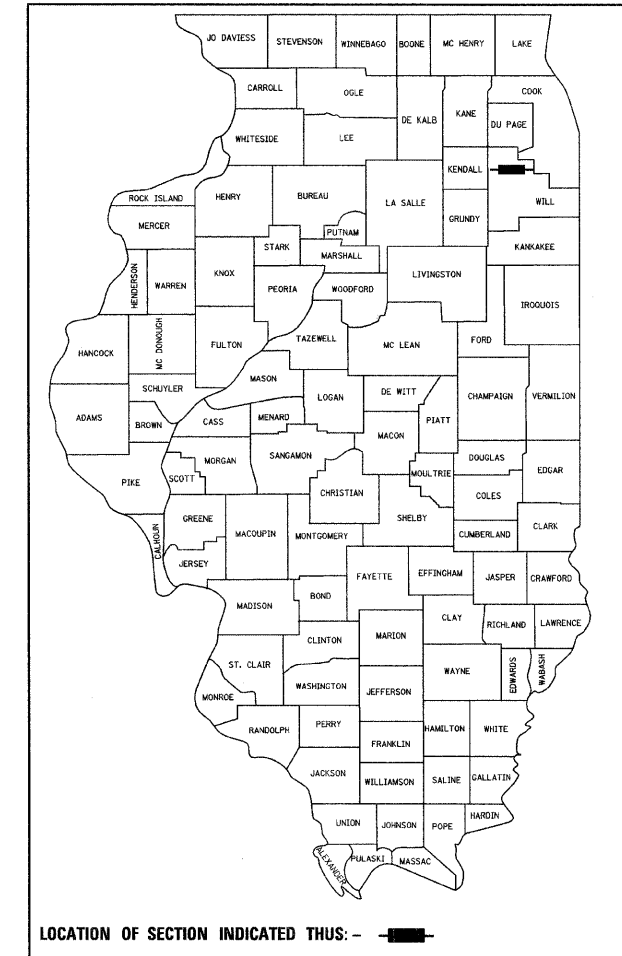


F.A.P. RTE.	SECTION	COUNTY	TOTAL SHEETS	SHEET NO.
607	13 B-I-1	WILL	16	1
STA. _____ TO STA. _____		ILLINOIS		
FED. ROAD DIST. NO.		FED. AID PROJECT		

CONTRACT NO. 60C89
D-91-274-07



STATE OF ILLINOIS
DEPARTMENT OF TRANSPORTATION
DIVISION OF HIGHWAYS

**PROPOSED
HIGHWAY PLANS**

F.A.P. 607 / U.S. 30
SECTION: 13 B-I-1
OVER HICKORY CREEK
BRIDGE DECK REPAIRS & OVERLAY
PROJECT: *ESP-0607(079)*
WILL COUNTY
C-91-274-07

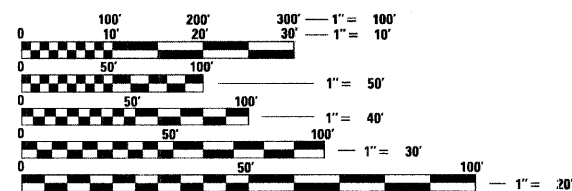
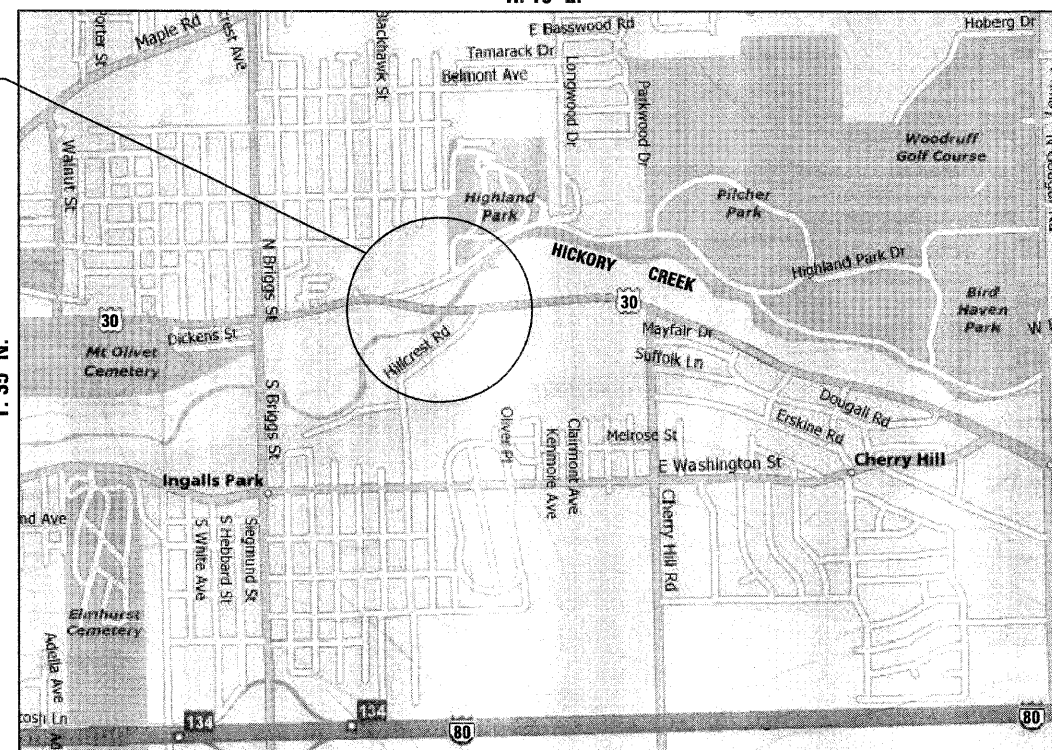
JOLIET TOWNSHIP
R. 10 E.

FOR INDEX OF SHEETS, SEE SHEET NO. 2

FUNCTIONAL CLASSIFICATION: OTHER PRINCIPAL ARTERIAL
ADT: 9,800 (2005), 20,655 (2021)
DESIGN SPEED LIMIT: 45 MPH
POSTED SPEED LIMIT: 45 MPH

PROJECT LOCATED IN THE CITY OF JOLIET

PROJECT LOCATION:
U.S. 30
OVER HICKORY CREEK
S.N. 099-0105



FULL SIZE PLANS HAVE BEEN PREPARED USING STANDARD ENGINEERING SCALES. REDUCED SIZED PLANS WILL NOT CONFORM TO STANDARD SCALES. IN MAKING MEASUREMENTS ON REDUCED PLANS, THE ABOVE SCALES MAY BE USED.

J.U.L.I.E.
JOINT UTILITY LOCATING INFORMATION FOR EXCAVATORS
1-800-892-0123 OR 811

GROSS LENGTH OF PROJECT = 190 FEET = 0.036 MILES
NET LENGTH OF PROJECT = 190 FEET = 0.036 MILES



CHRISTIAN-ROGE & ASSOCIATES, INC.
ENGINEERS - PLANNERS - SURVEYORS
211 W. WACKER DRIVE CHICAGO, IL 60606
TELEPHONE: 312-372-2023



Bhadresh N. Shah JAN. 06, 2009
BHADRESH N. SHAH
LICENSED STRUCTURAL ENGINEER
STATE OF ILLINOIS LIC. No. 081-004476
EXPIRES: 11-30-10

STATE OF ILLINOIS
DEPARTMENT OF TRANSPORTATION
DIVISION OF HIGHWAYS

SUBMITTED January 8, 2009
Diana M. O'Keefe
DEPUTY DIRECTOR OF HIGHWAYS, REGION ONE ENGINEER

March 13, 2009
Charles G. Ingersoll
ENGINEER OF DESIGN AND ENVIRONMENT

March 13, 2009
Christine M. Reed
DIRECTOR OF HIGHWAYS, CHIEF ENGINEER

PRINTED BY THE AUTHORITY
OF THE STATE OF ILLINOIS

DISTRICT ONE - DESIGN PROJECT MANAGER: ISAAC KWARTENG (847) 705-4230

CONTRACT NO. 60C89