

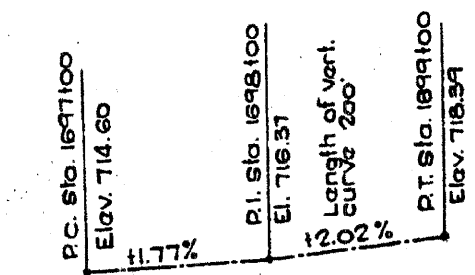
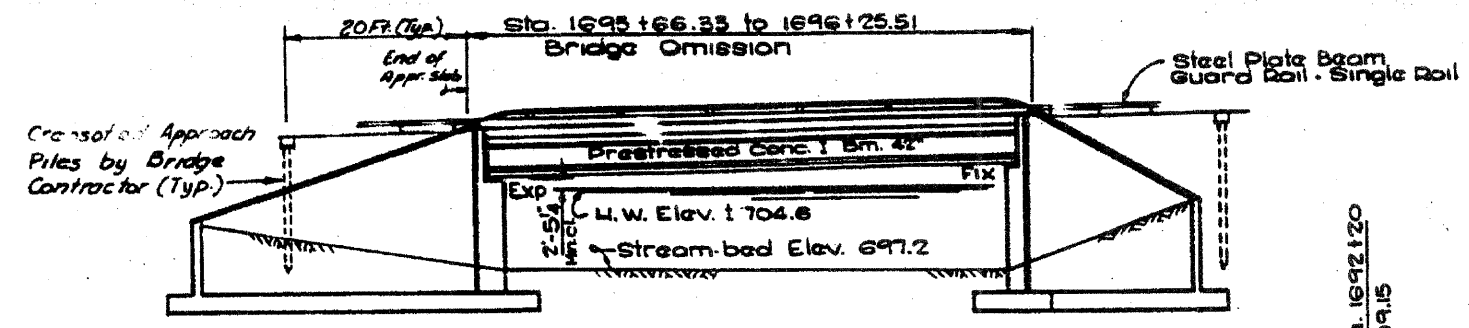
F.A.P. RTE.	SECTION	COUNTY	TOTAL SHEETS	SHEET NO.
338	2007-024 I	DUPAGE	26	7
STA.	TO STA.			
FED. ROAD DIST. NO.	ILLINOIS	FED. AID PROJECT		

CONTRACT NO. 60C90

TOTAL BILL OF MATERIAL

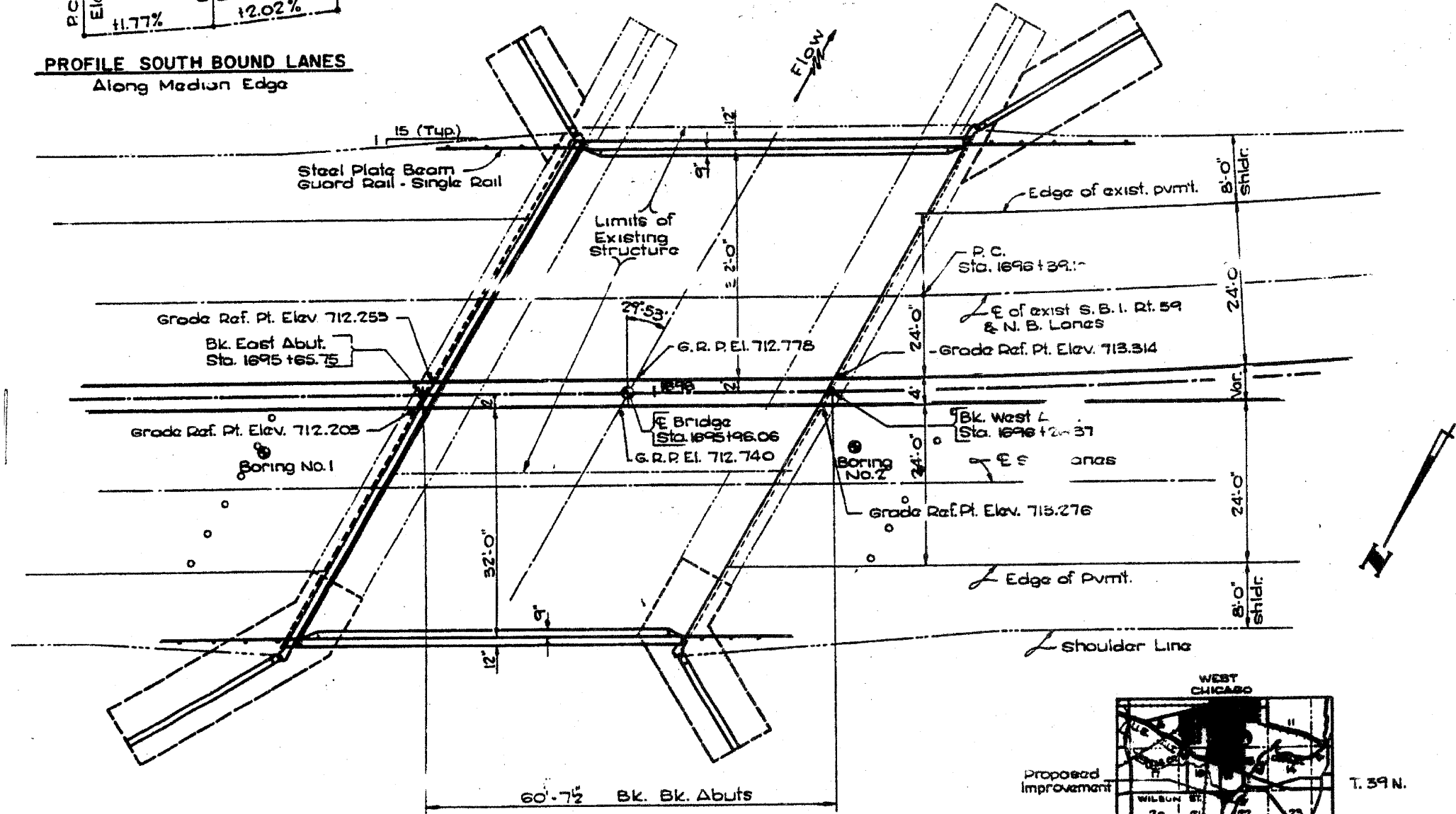
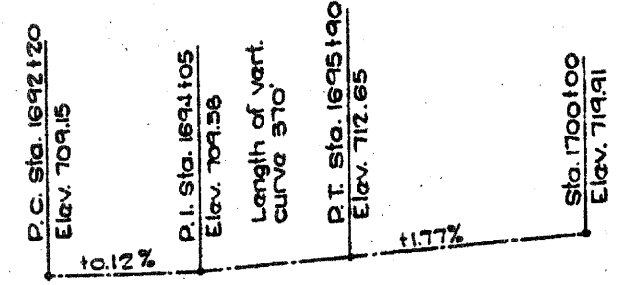
ITEM	UNIT	QUANTITY
HOT-MIX ASPHALT SURFACE REMOVAL COMPLETE	SQ. YD.	402
BRIDGE DECK HYDRO-SCARIFICATION 1/2"	SQ. YD.	402
BRIDGE DECK LATEX CONCRETE OVERLAY, 2 1/4 INCHES	SQ. YD.	402
DECK SLAB REPAIR (FULL DEPTH, TYPE I)	SQ. YD.	0.5
DECK SLAB REPAIR (FULL DEPTH, TYPE II)	SQ. YD.	14
SILICONE JOINT SEALER 1 3/4"	FOOT	81
BRIDGE DECK GROOVING	SQ. YD.	378
STRUCTURAL REPAIR OF CONCRETE (DEPTH GREATER THAN 5 INCHES)	SQ. FT.	18
CLASS D PATCHES, TYPE I, 8 INCH	SQ. YD.	2
CONTROLLED LOW-STRENGTH MATERIAL	CU. YD.	2
STRUCTURAL REPAIR OF CONCRETE (DEPTH EQUAL TO OR LESS THAN 5 INCHES)	SQ. FT.	66

NOTE:
THERE ARE TRAFFIC SIGNAL CONDUITS ATTACHED TO BOTH PARAPETS. THE CONTRACTOR SHALL WATCH AND PROTECT THESE FACILITIES.

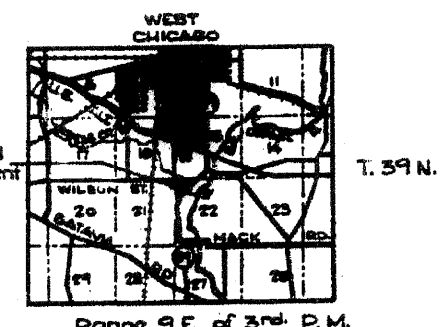


ELEVATION

FOR INFORMATION ONLY



PLAN VIEW



LOCATION MAP

REVISIONS	
NAME	DATE

ILLINOIS DEPARTMENT OF TRANSPORTATION
GENERAL PLAN & ELEVATION
IL. RTE. 59
OVER
KRESS CREEK
F.A.P. RTE. 338 SECTION: 2007-024 I
DuPAGE COUNTY
STRUCTURE NO. 022-0037
SCALE: NONE
DATE: JANUARY 12, 2009
DRAWN BY: D.L./F.M.
CHECKED BY: B.N.S./S.J.P.
CHRISTIAN-ROGE & ASSOC., INC.
CHICAGO ILLINOIS