



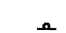

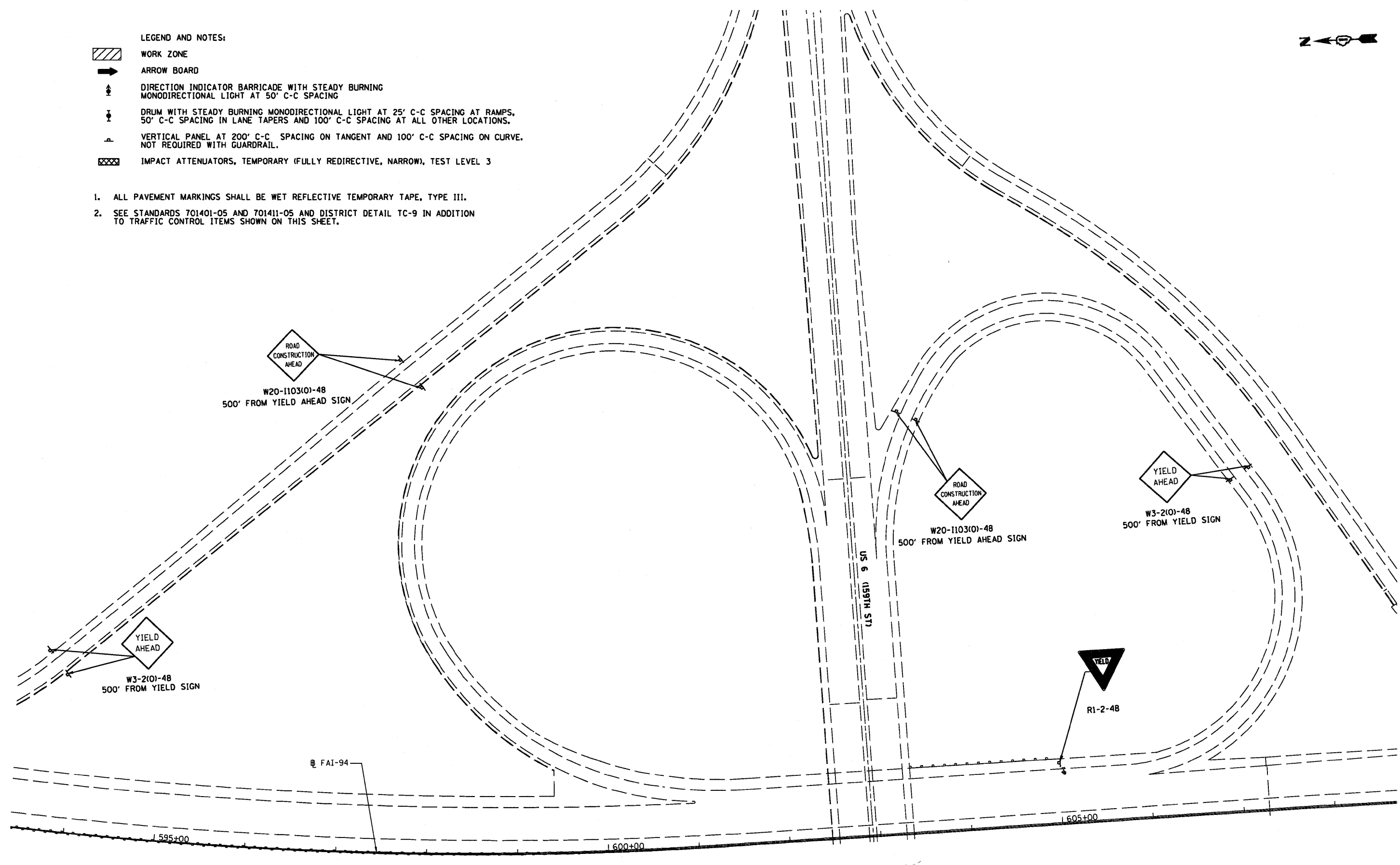


- LEGEND AND NOTES:**
-  WORK ZONE
 -  ARROW BOARD
 -  DIRECTION INDICATOR BARRICADE WITH STEADY BURNING MONODIRECTIONAL LIGHT AT 50' C-C SPACING
 -  DRUM WITH STEADY BURNING MONODIRECTIONAL LIGHT AT 25' C-C SPACING AT RAMP, 50' C-C SPACING IN LANE TAPERS AND 100' C-C SPACING AT ALL OTHER LOCATIONS.
 -  VERTICAL PANEL AT 200' C-C SPACING ON TANGENT AND 100' C-C SPACING ON CURVE. NOT REQUIRED WITH GUARDRAIL.
 -  IMPACT ATTENUATORS, TEMPORARY (FULLY REDIRECTIVE, NARROW), TEST LEVEL 3

1. ALL PAVEMENT MARKINGS SHALL BE WET REFLECTIVE TEMPORARY TAPE, TYPE III.
2. SEE STANDARDS 701401-05 AND 701411-05 AND DISTRICT DETAIL TC-9 IN ADDITION TO TRAFFIC CONTROL ITEMS SHOWN ON THIS SHEET.



FILE NAME = D:\68021-842-STAGE.PLAN.STG1.dgn	USER NAME = dwoznieraki	DESIGNED -	REVISED -	STATE OF ILLINOIS DEPARTMENT OF TRANSPORTATION	BISHOP FORD EXPRESSWAY (I-94) SUGGESTED MAINTENANCE OF TRAFFIC - STAGE I PLAN		F.A.I. RTE.	SECTION	COUNTY	TOTAL SHEETS	SHEET NO.
	PLOT SCALE = 100.00' / IN.	DRAWN - DMW	REVISED -				94	(D405,ETC,A2-T&O7)RS-11	COOK	133	42
	PLOT DATE = 2/5/2009	CHECKED -	REVISED -				CONTRACT NO. 60021		FED. ROAD DIST. NO. ILLINOIS FED. AID PROJECT		
	DATE = 2/5/2009	REVISED -		SCALE: 1" = 50'	SHEET NO. 14 OF 24 SHEETS	STA. 590+00 TO STA. 605+00					