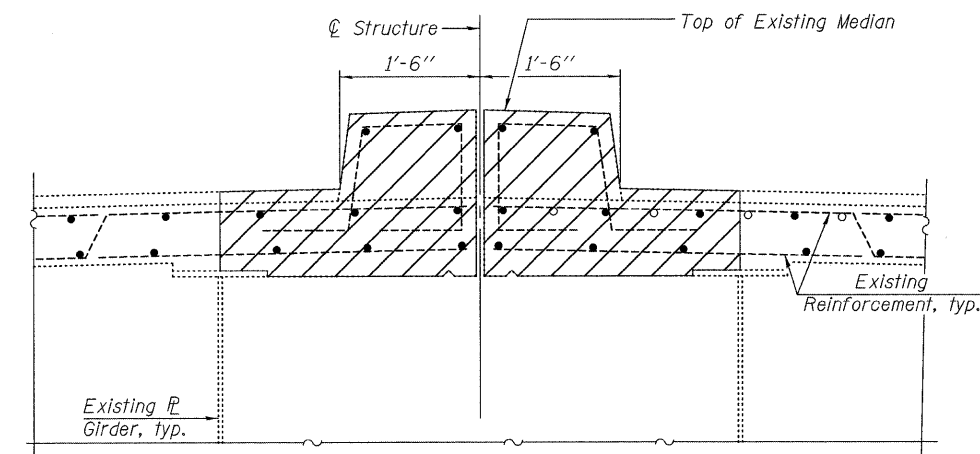


Contract # 60D74

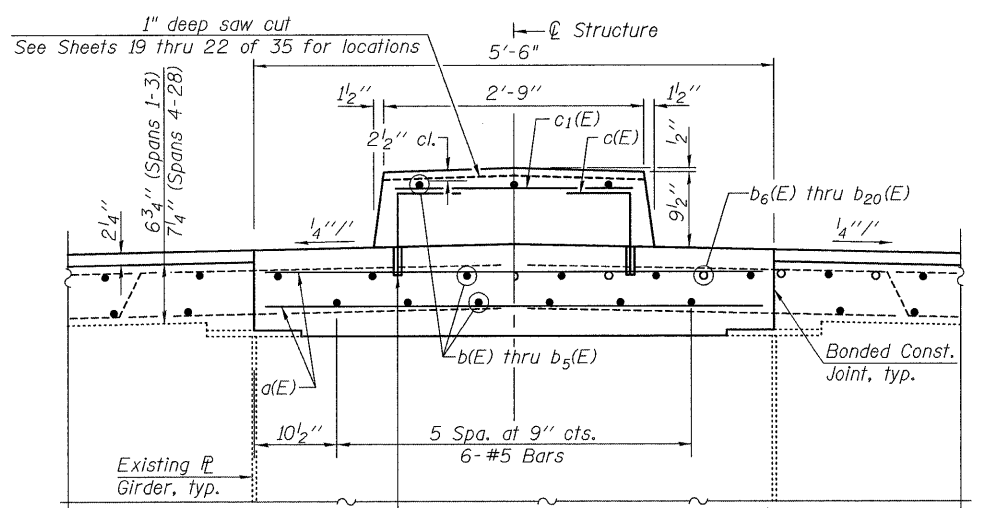
**BILL OF MATERIAL**

Bar	No.	Size	Length	Shape
a(E)	5718	#5	5'-3"	—
a <sub>1</sub> (E)	48	#5	4'-0"	—
b(E)	585	#5	30'-0"	—
b <sub>1</sub> (E)	180	#5	30'-7"	—
b <sub>2</sub> (E)	288	#5	28'-0"	—
b <sub>3</sub> (E)	30	#5	29'-0"	—
b <sub>4</sub> (E)	3	#5	20'-0"	—
b <sub>5</sub> (E)	189	#5	31'-2"	—
b <sub>6</sub> (E)	12	#6	37'-3"	—
b <sub>7</sub> (E)	6	#6	39'-3"	—
b <sub>8</sub> (E)	12	#6	31'-4"	—
b <sub>9</sub> (E)	6	#6	35'-8"	—
b <sub>10</sub> (E)	6	#6	30'-8"	—
b <sub>11</sub> (E)	6	#6	34'-1"	—
b <sub>12</sub> (E)	6	#6	28'-3"	—
b <sub>13</sub> (E)	6	#6	25'-5"	—
b <sub>14</sub> (E)	6	#6	29'-6"	—
b <sub>15</sub> (E)	6	#6	34'-4"	—
b <sub>16</sub> (E)	6	#6	29'-9"	—
b <sub>17</sub> (E)	18	#6	40'-1"	—
b <sub>18</sub> (E)	12	#6	44'-5"	—
b <sub>19</sub> (E)	6	#6	31'-11"	—
b <sub>20</sub> (E)	6	#6	34'-10"	—
c(E)	2212	#5	1'-10"	┌
c <sub>1</sub> (E)	4424	#5	2'-6"	—
Concrete Removal		Cu. Yd.	619.1	
Reinforcement Bars, Epoxy Coated		Pound	93,220	
Concrete Superstructure		Cu. Yd.	663.0	
Protective Coat		Sq. Yd.	1725	

Bars indicated thus 6 x 2-#5 etc. indicates 6 line of bars with 2 lengths per line.

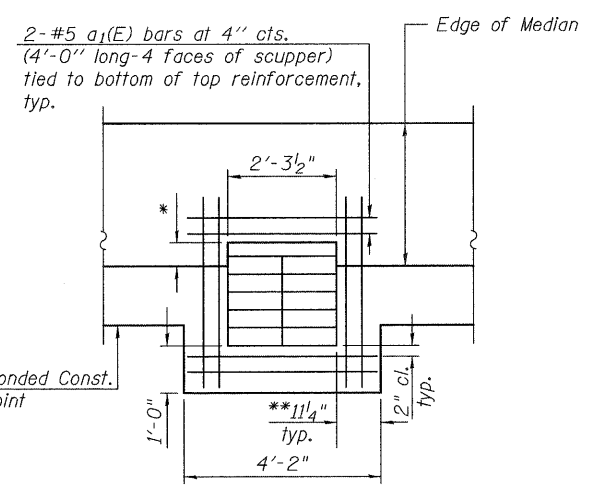


**SECTION A-A (EXISTING)**



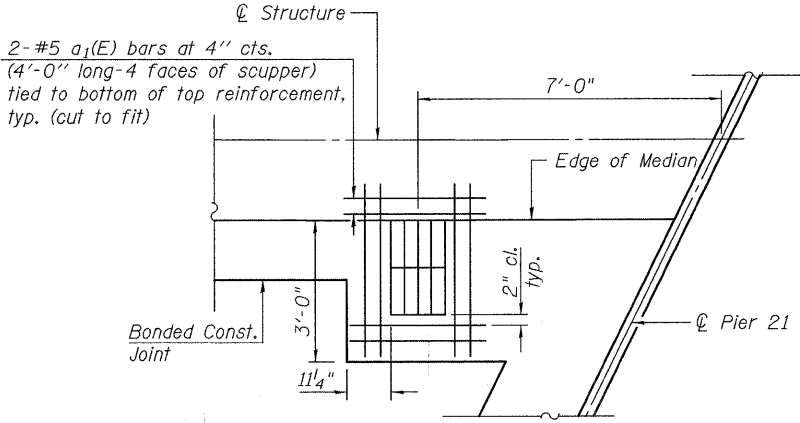
**SECTION A-A (PROPOSED)**

AT MIDSPAN Ferrule Loop Slab Insert Proof Load = 6,600 lbs. Cost Included with Reinforcement Bars, Epoxy Coated. NEAR PIERS



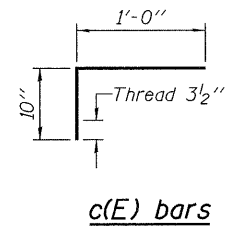
**REINFORCEMENT AT TYPICAL DRAINAGE SCUPPER**

Cut longitudinal reinforcement to clear drainage scuppers. \*Match the existing dimension in the field. \*\*U.N.O.



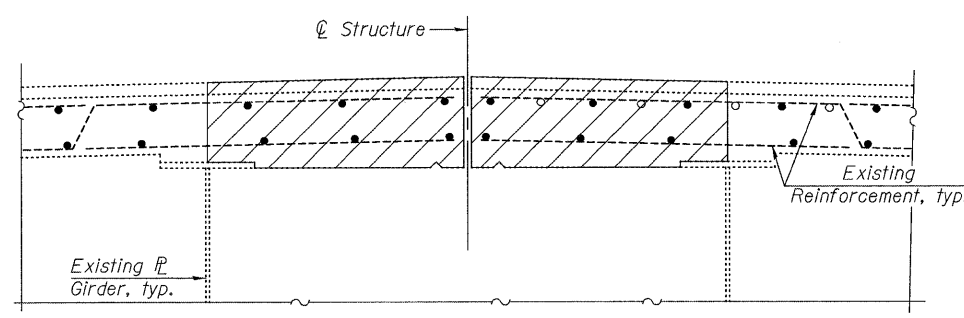
**DRAINAGE SCUPPER, DS-12 STATION 242+85**

Cut longitudinal reinforcement to clear drainage scuppers.

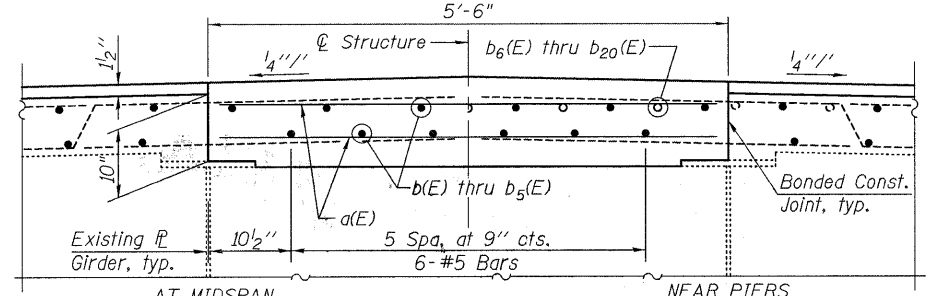


**NOTES:**

Hatched areas indicate concrete sections to be removed. Care shall be exercised by the contractor during and following Concrete Removal operations to ensure that the existing rebar remaining in place are not damaged. All existing reinforcement to be incorporated into new construction shall be blast-cleaned, straightened, and properly positioned prior to concrete placement. Any reinforcement damaged during Concrete Removal shall be repaired or replaced using an approved Bar Splicer or Mechanical System. Cost included with Concrete Removal.  
Min. Lap Length for #5 bars = 1'-4".  
Location of drainage scuppers found on Sheets 22 and 23 of 35.  
Remove and Clean existing drainage scuppers adjacent to the median, then replace the existing drainage scuppers so that the rim is flush with the top surface of the proposed overlay. Cost included with Concrete Removal.  
U.N.O. = Unless Noted Otherwise  
See Sheet 24 of 35 for Drainage Scupper, DS-12.



**SECTION B-B (EXISTING)**



**SECTION B-B (PROPOSED)**

AT MIDSPAN NEAR PIERS

**rjngroup**  
Excellence through Ownership  
200 West Front Street  
Wheaton, IL 60187

ILLINOIS DEPARTMENT OF TRANSPORTATION  
LONGITUDINAL JOINT AND  
MEDIAN DETAIL  
BURNHAM AVE OVER STATE ST, R.R. & RIVER  
FAU RTE 2943 SECTION 1212.8-I-1  
COOK COUNTY  
STATION 231+79.04  
STRUCTURE NO. 016-0806  
DATE: 1-14-2009 DRAWN BY JMT  
CHECKED BY WJV