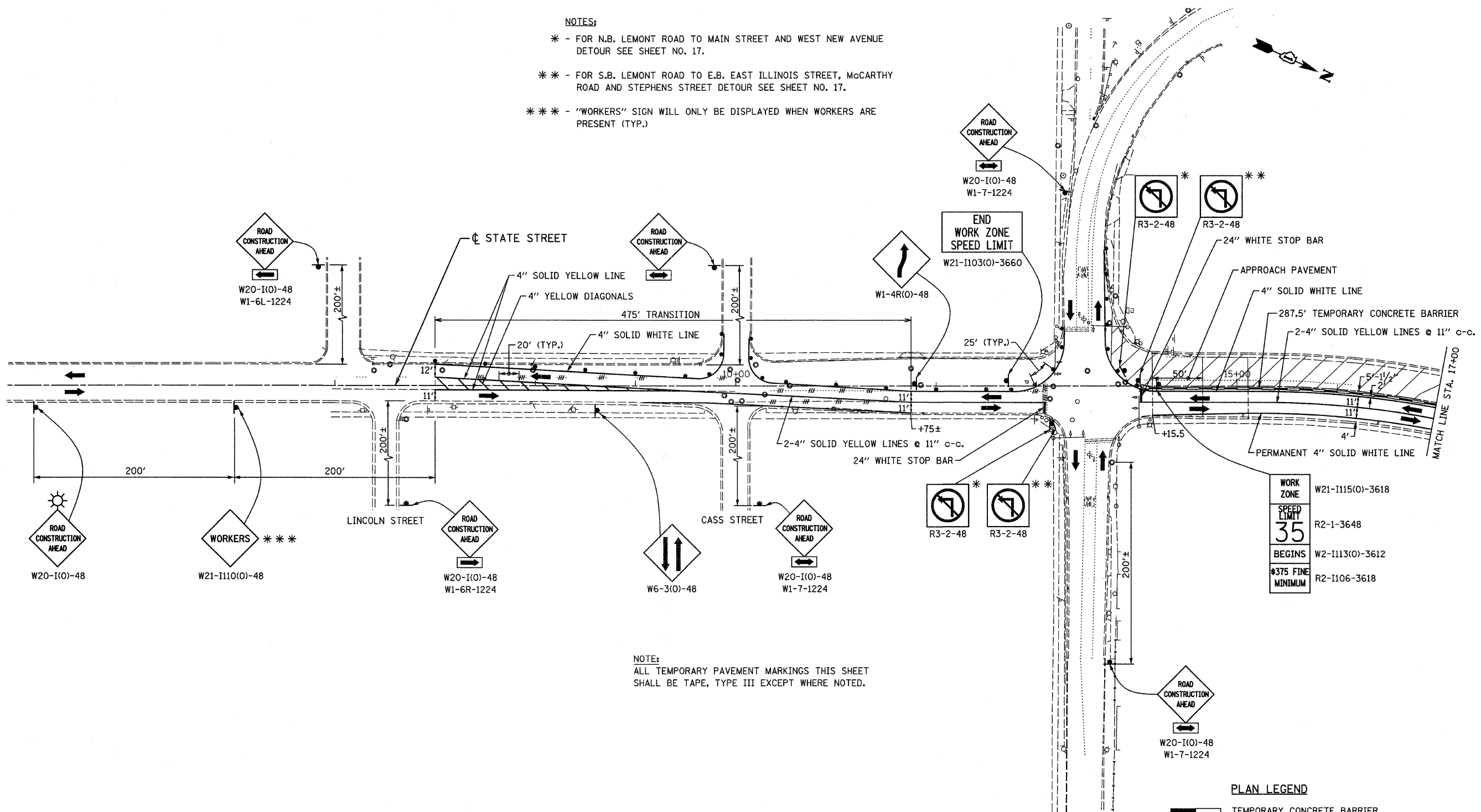


**NOTES:**

- \* - FOR N.B. LEMONT ROAD TO MAIN STREET AND WEST NEW AVENUE DETOUR SEE SHEET NO. 17.
- \*\* - FOR S.B. LEMONT ROAD TO E.B. EAST ILLINOIS STREET, MCCARTHY ROAD AND STEPHENS STREET DETOUR SEE SHEET NO. 17.
- \*\*\* - "WORKERS" SIGN WILL ONLY BE DISPLAYED WHEN WORKERS ARE PRESENT (TYP.)



NOTE:  
ALL TEMPORARY PAVEMENT MARKINGS THIS SHEET SHALL BE TAPE, TYPE III EXCEPT WHERE NOTED.

WORK ZONE	W21-1115(O)-3618
SPEED LIMIT	R2-1-3648
BEGINS	W2-1113(O)-3612
#375 FINE MINIMUM	R2-1106-3618

**PLAN LEGEND**

- TEMPORARY CONCRETE BARRIER
- ATTENUATOR
- TRAFFIC DIRECTION ARROW
- WORK ZONE
- BARRICADES OR BARRELS SPACED AS NOTED ON PLANS
- EXISTING PAVEMENT MARKING REMOVAL
- TEMPORARY SIGN

FILE NAME = 60076 atg2-B1.dgn  
PLOT DATE = 1/31/2009

**CHRISTIAN-ROGE & ASSOCIATES, INC.**  
ENGINEERS-PLANNERS-SURVEYORS  
211 WEST WACKER DRIVE  
CHICAGO, ILLINOIS 60606  
PHONE: (312)372-2023 FAX: (312)372-5274

DESIGNED -	G.F.L.	REVISED -	
DRAWN -	B.K.	REVISED -	
CHECKED -	E.J.M.	REVISED -	
DATE -	JANUARY, 2009	REVISED -	

**STATE OF ILLINOIS  
DEPARTMENT OF TRANSPORTATION**

**SUGGESTED MAINTENANCE OF TRAFFIC - STAGE II  
LEMONT ROAD**

SCALE: 1" = 50' SHEET NO. M6 OF M8 SHEETS STA. TO STA.

F.A.J. RTE.	SECTION	COUNTY	TOTAL SHEETS	SHEET NO.
2612	3104 B-1-I-2	COOK	80	13
FED. ROAD DIST. NO. 1 ILLINOIS FED. AID PROJECT			CONTRACT NO. 60D76	