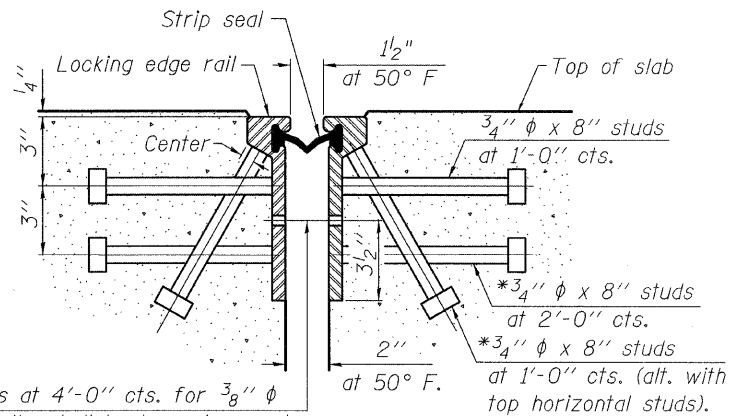


*Granular or solid flux filled headed studs conforming to Article 1006.32 of the Std. Specs., automatically end welded.

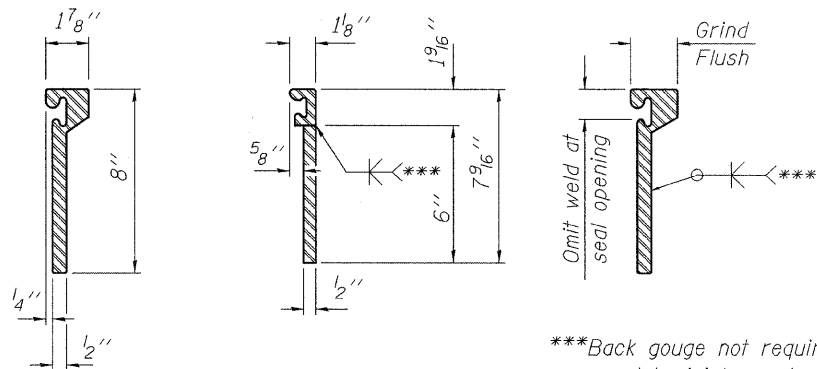


7/16" ϕ holes at 4'-0" cts. for 3/8" ϕ bolts. All bolts shall be burned, sawed, or chipped off flush with the plates after forms are removed, typ.

at 50° F.

at 1'-0" cts. (alt. with top horizontal studs).

SECTION THRU ROLLED RAIL JOINT

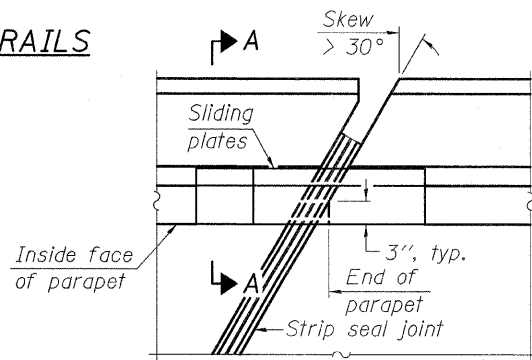


ROLLED (EXTRUDED) RAIL WELDED RAIL

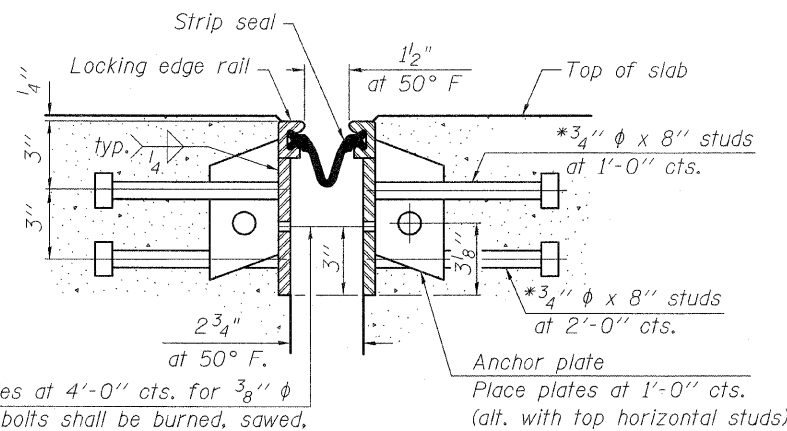
LOCKING EDGE RAIL SPLICE

The inside of the locking edge rail groove shall be free of weld residue.

LOCKING EDGE RAILS



PLAN

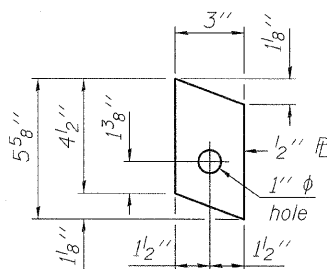


7/16" ϕ holes at 4'-0" cts. for 3/8" ϕ bolts. All bolts shall be burned, sawed, or chipped off flush with the plates after forms are removed, typ.

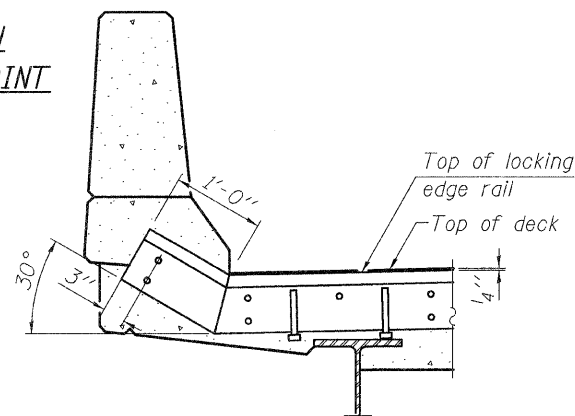
at 50° F.

Place plates at 1'-0" cts. (alt. with top horizontal studs)

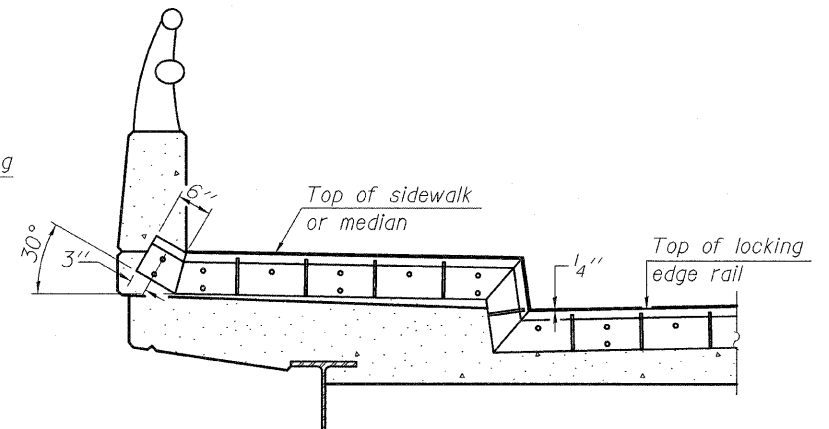
SECTION THRU WELDED RAIL JOINT



ANCHOR PLATE (for welded rail)



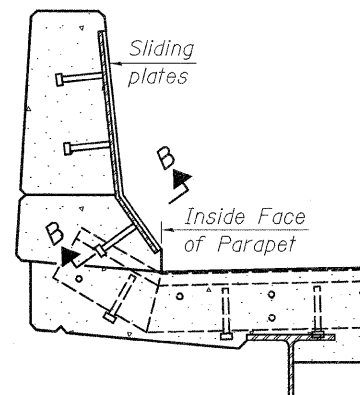
AT PARAPET



AT SIDEWALK OR MEDIAN

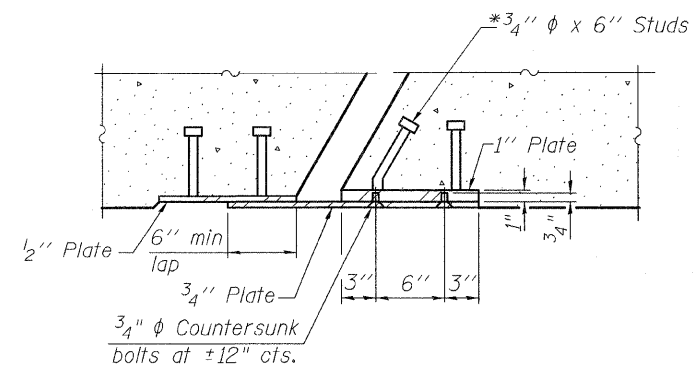
Shorter plates with a single row of studs at 12" cts. may be necessary on medians which are shallower than 9". See manufacturer's recommendation.

TYPICAL END TREATMENTS



SECTION A-A

POINT BLOCK DETAILS (for skews > 30°)



SECTION B-B

PREFORMED JOINT STRIP SEAL AT SOUTH ABUTMENT

NOTE:
Work This Sheet With Sht's. S14 & S15

CR & A CHRISTIAN-ROGE & ASSOCIATES, INC.
ENGINEERS / PLANNERS / SURVEYORS
211 W. WACKER DRIVE CHICAGO, IL. 60606
PHONE: (312)372-2023 FAX: (312)372-5274

EJ-SSJ 9-3-07

FILE NAME = exp...Jt-So-Abut...III.dgn	USER NAME = IDOT	DESIGNED - B.N.S.	REVISED -
		DRAWN - R.E.S./D.L./F.M.	REVISED -
		CHECKED - B.N.S./J.C.N.	REVISED -
		DATE - JANUARY, 2009	REVISED -

STATE OF ILLINOIS
DEPARTMENT OF TRANSPORTATION

EXPANSION JOINT DETAILS AT SOUTH ABUTMENT - III
LEMONT ROAD OVER DES PLAINES RIVER
S.N. 016-2504

SCALE:	SHEET NO. S16 OF S41 SHEETS	STA.	TO STA.	F.A.U. RTE. 2612	SECTION 3104 B-1-1-2	COUNTY COOK	TOTAL SHEETS 80	SHEET NO. 52
				FED. ROAD DIST. NO.	ILLINOIS FED. AID PROJECT	CONTRACT NO. 60D76		