

F.A.P. RTE.	SECTION	COUNTY	TOTAL SHEETS	SHEET NO.
330	17 B-2-1-1	WILL	21	1
FED. ROAD DIST. NO. 1	ILLINOIS	CONTRACT NO. 60D79		

STATE OF ILLINOIS
DEPARTMENT OF TRANSPORTATION
DIVISION OF HIGHWAYS

PROPOSED HIGHWAY PLANS

F.A.P. 330 / U.S. 45 / 52
SECTION: 17 B-2-1-1
OVER SOUTH BRANCH FORKED CREEK
BRIDGE DECK OVERLAY
PROJECT: *ESP-0330(051)*
WILL COUNTY
C-91-086-08

FOR INDEX OF SHEETS, SEE SHEET NO. 2

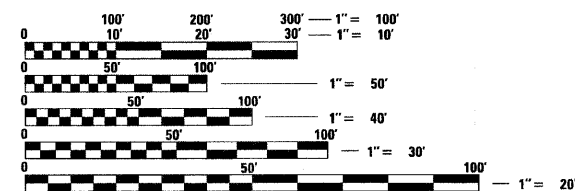
DESIGN DESIGNATION:
OTHER PRINCIPAL ARTERIAL
POSTED SPEED: 55 M.P.H.
2005 ADT = 6,600
2021 ADT = 7,290

PROJECT LOCATED IN
WILL COUNTY

D-91-086-08



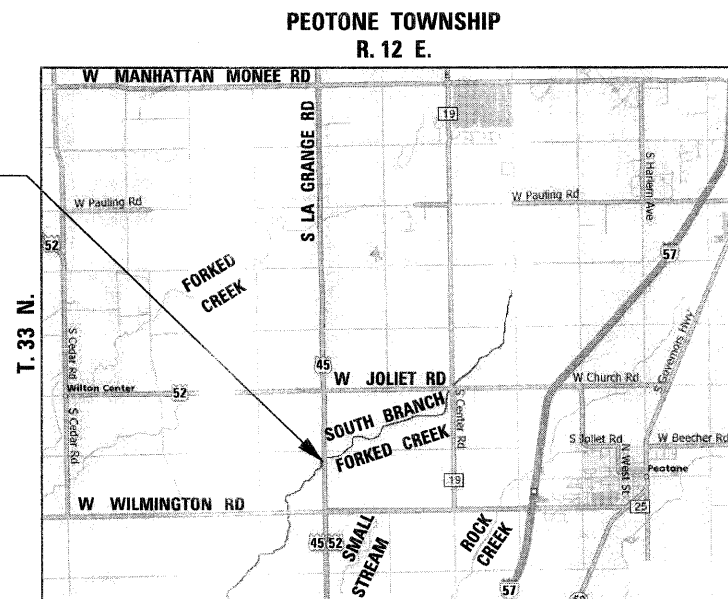
DISTRICT ONE - DESIGN PROJECT MANAGER: ISAAC KWARTENG (847) 705-4230



FULL SIZE PLANS HAVE BEEN PREPARED USING STANDARD ENGINEERING SCALES. REDUCED SIZED PLANS WILL NOT CONFORM TO STANDARD SCALES. IN MAKING MEASUREMENTS ON REDUCED PLANS, THE ABOVE SCALES MAY BE USED.

J.U.L.I.E.
JOINT UTILITY LOCATING INFORMATION FOR EXCAVATORS
1-800-892-0123
OR 811

PROJECT LOCATION:
U.S. 45 / 52 OVER
SOUTH BRANCH
FORKED CREEK
S.N. 099-0121



GROSS LENGTH OF PROJECT = 136.83 FEET = 0.026 MILES
NET LENGTH OF PROJECT = 136.83 FEET = 0.026 MILES

STATE OF ILLINOIS
DEPARTMENT OF TRANSPORTATION
DIVISION OF HIGHWAYS

SUBMITTED JANUARY 8, 2009

Diana M. O'Keefe DEPUTY DIRECTOR OF HIGHWAYS, REGION ONE ENGINEER
March 13, 2009
Charles J. Sorensen ENGINEER OF DESIGN AND ENVIRONMENT
March 13, 2009
Christine M. Reed DIRECTOR OF HIGHWAYS, CHIEF ENGINEER



Birinder S. Sachdeva January 06, 2009
BIRINDER S. SACHDEVA, P.E. DATE
EXPIRES: 11-30-2009

Bhadresh N. Shah JAN. 09, 2009
BHADRESH N. SHAH, S.E., P.E. DATE
EXPIRES: 11-30-2010

CR & A
CHRISTIAN-ROGE & ASSOCIATES, INC.
ENGINEERS - PLANNERS - SURVEYORS
211 W. WACKER DRIVE CHICAGO, IL 60606
TELEPHONE: 312-372-2023

**PRINTED BY THE AUTHORITY
OF THE STATE OF ILLINOIS**

CONTRACT NO. 60D79