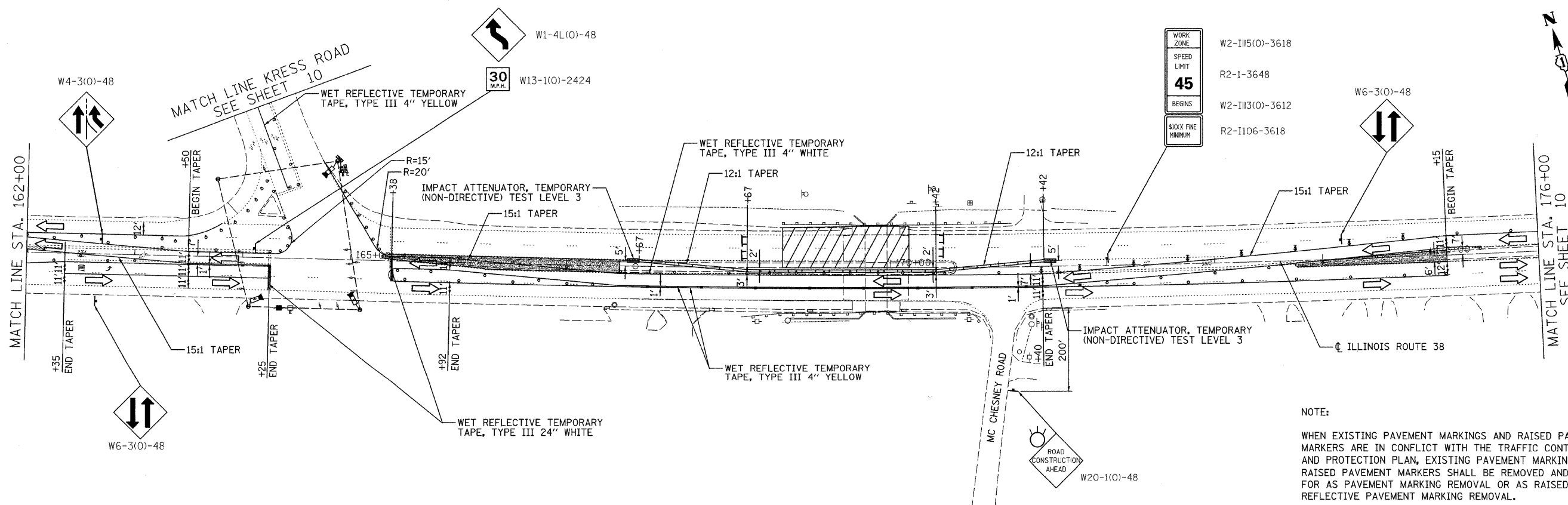
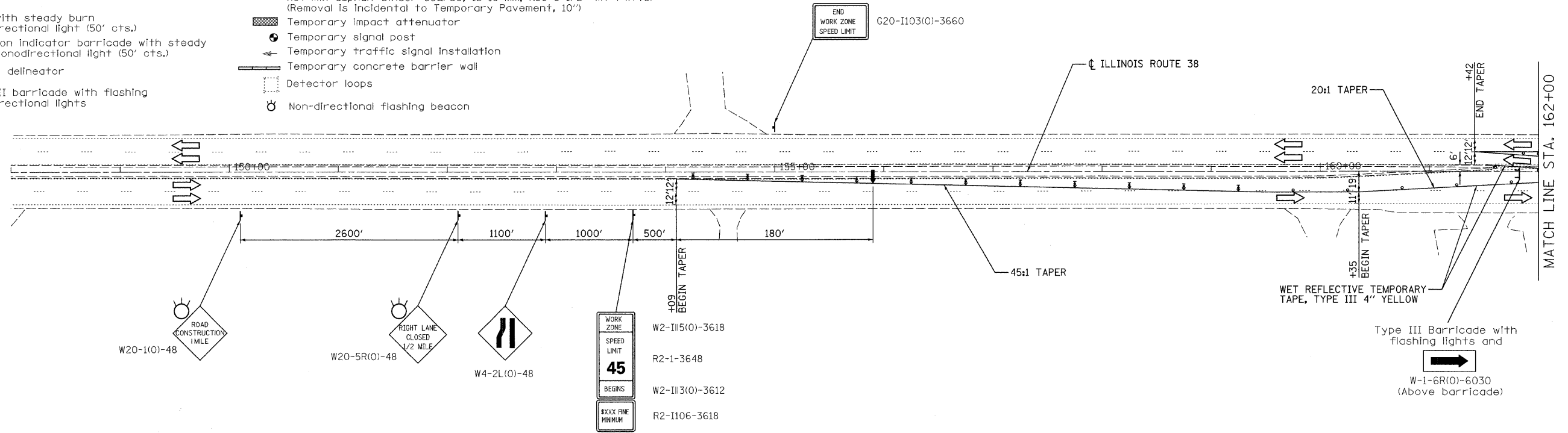


SYMBOLS

- ↑ Arrow board
- ▨ Work area
- ♣ Sign
- ⊙ Drum with steady burn monodirectional light (50' cts.)
- ↑ Direction indicator barricade with steady burn monodirectional light (50' cts.)
- Flexible delineator
- ⊕ Type III barricade with flashing monodirectional lights
- ◇ Crystal, bidirectional barrier wall / guardrail marker (25' cts.)
- ▨ Temporary Pavement:
Hot-mix asphalt surface course, mix "D", N50 (IL-9.5 mm), 1 1/2"
Hot-mix asphalt binder course, IL 19 mm, N50 8 1/2" (in 4 lifts)
(Removal is incidental to Temporary Pavement, 10")
- ▨ Temporary impact attenuator
- ⊙ Temporary signal post
- ⊕ Temporary traffic signal installation
- ▨ Temporary concrete barrier wall
- Detector loops
- ⊕ Non-directional flashing beacon



FILE NAME = n:\proj\3323\3323_21\design\proposals\3323_29-89-TC21.dgn

Ciorba Group, Inc.
CONSULTING ENGINEERS
5507 North Cumberland Avenue, Suite 402
Chicago, Illinois 60656
Tel 773.775.4009 Fax 773.775.4014

USER NAME = wjancaster	DESIGNED - JCC	REVISED -
PLOT SCALE = 50.0000' / IN.	DRAWN - JCC	REVISED -
PLOT DATE = 1/13/2009	CHECKED - MJL	REVISED -
	DATE - 12/30/07	REVISED -

**STATE OF ILLINOIS
DEPARTMENT OF TRANSPORTATION**

**FAP 347 / ILLINOIS ROUTE 38 (ROOSEVELT ROAD)
OVER KRESS CREEK
TRAFFIC CONTROL AND PROTECTION - STAGE 2**

F.A.P. RTE. 347	SECTION 2 Y-B-I	COUNTY	TOTAL SHEETS 34	SHEET NO. 9
SCALE: SHEET NO. OF SHEETS STA. TO STA.		CONTRACT NO. 60D82		
FED. ROAD DIST. NO. - ILLINOIS FED. AID PROJECT				