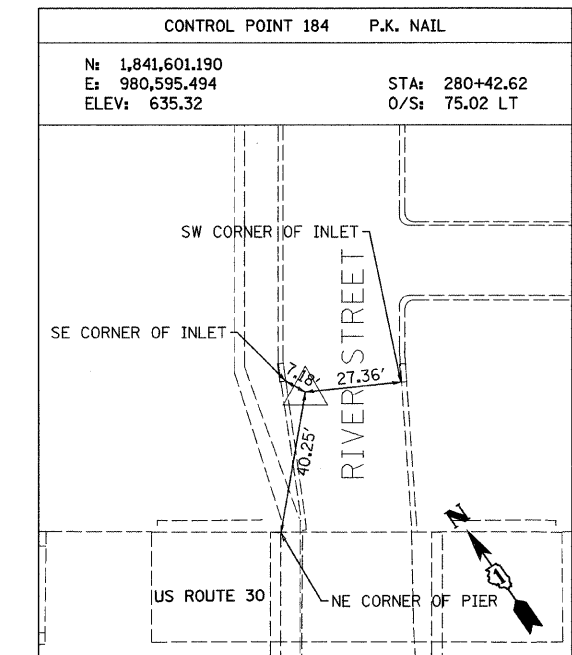
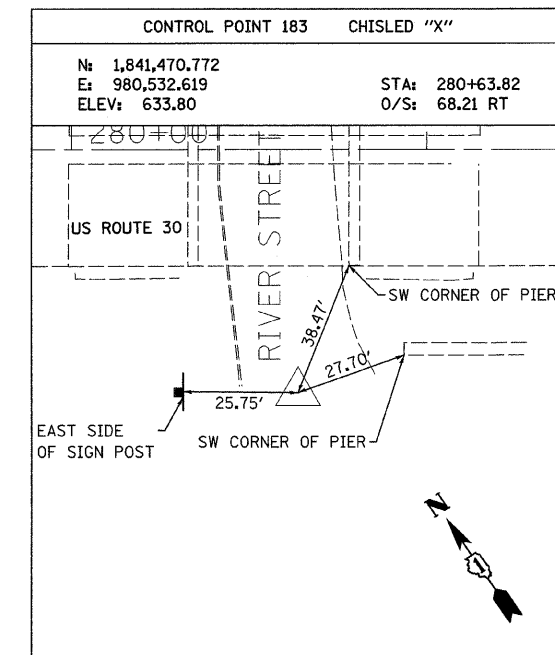
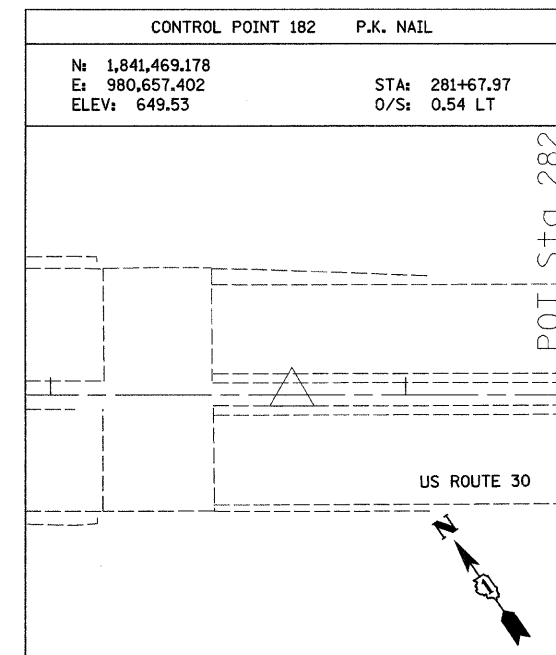
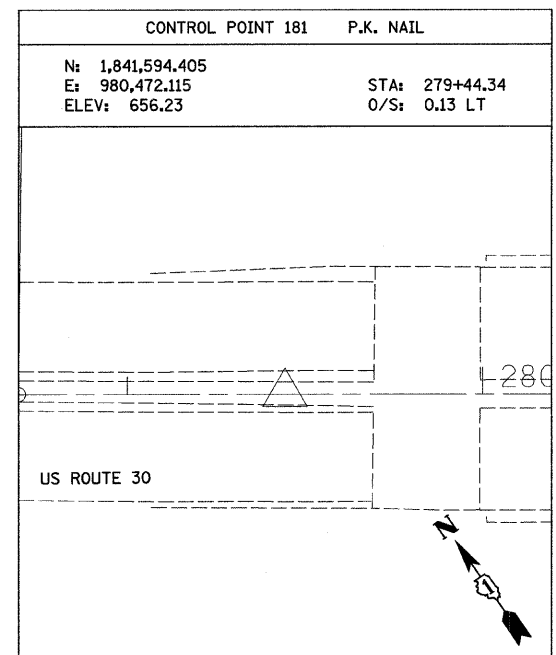
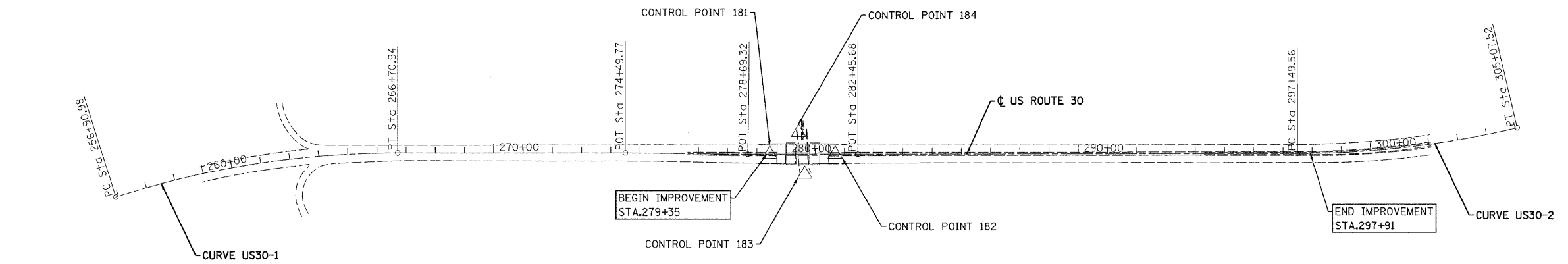


EXIST. CURVE US30-1  
 PI STA. = 261+84.82  
 $\Delta = 17^\circ 32' 46''$  (RT)  
 D = 1° 47' 26"  
 R = 3,200.00'  
 T = 493.84'  
 L = 979.96'  
 E = 37.88'  
 P.C. STA. = 256+90.98  
 P.T. STA. = 266+70.94  
 DESIGN SPEED = 45 MPH

EXIST. CURVE US30-2  
 PI STA. = 301+30.22  
 $\Delta = 13^\circ 09' 36''$  (LT)  
 D = 1° 44' 10"  
 R = 3,300.00'  
 T = 380.65'  
 L = 757.96'  
 E = 21.88'  
 P.C. STA. = 297+49.56  
 P.T. STA. = 305+07.52  
 DESIGN SPEED = 45 MPH

US ROUTE 30 CENTERLINE		
DESCRIPTION	NORTHING	EASTING
P.C.	256+90.98	1,842,731.694
P.T.	266+70.94	1,842,313.239
P.O.T.	274+49.77	1,841,875.950
P.O.T.	278+69.32	1,841,636.420
P.O.T.	282+45.68	1,841,425.102
P.C.	297+49.56	1,840,581.732
P.T.	305+07.52	1,840,232.154

BENCHMARK  
 TOP NUT OF FIRST FIRE HYDRANT NORTH OF BRIDGE  
 ON THE WEST SIDE OF RIVER STREET ELEV. 639.79



FILE NAME = n:\p\03329\3329\_2B\design\p\03329\_2B\_04-Alignment.dgn