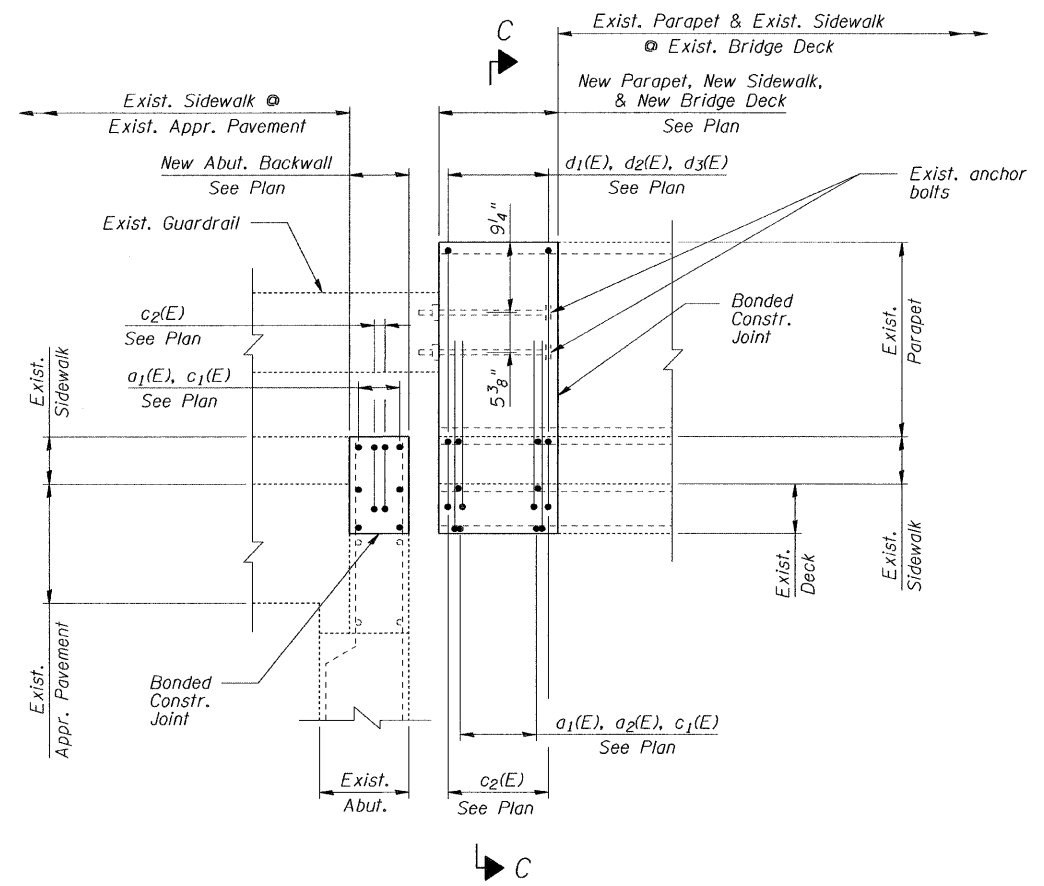
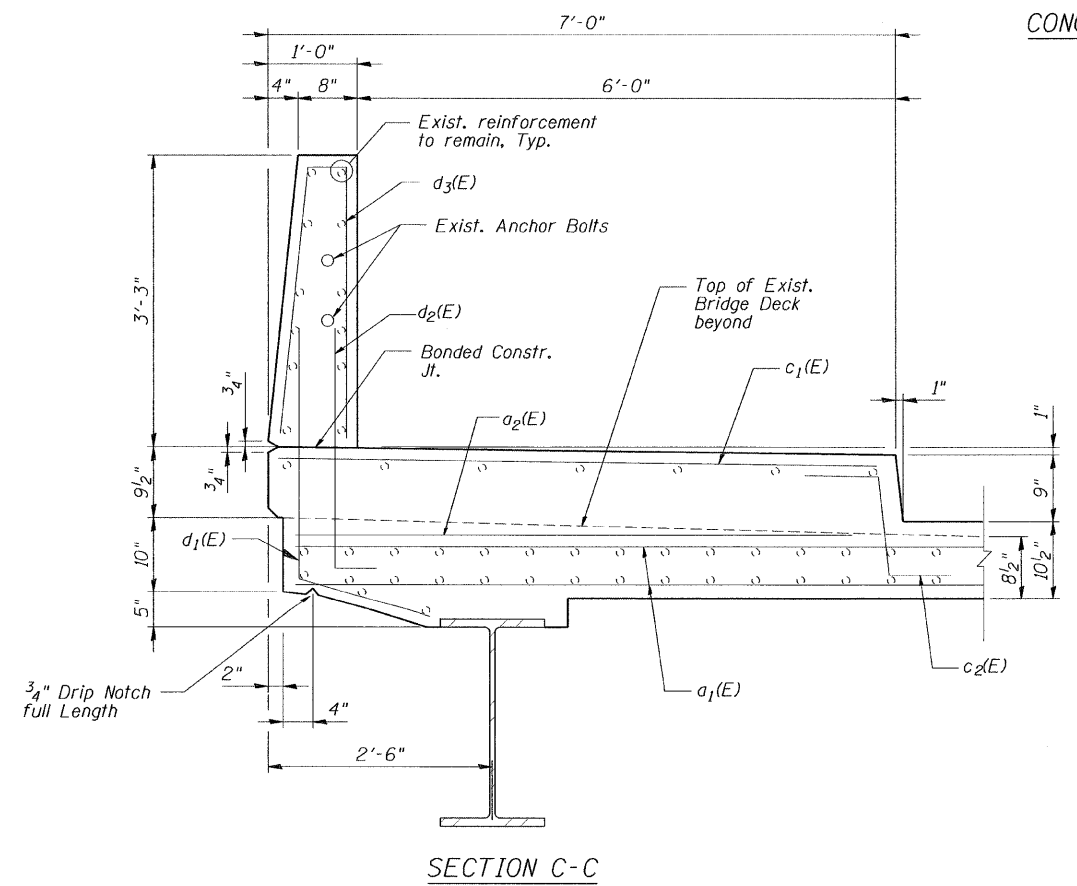


CONCRETE REMOVAL @ EXISTING PARAPET & EXISTING SIDEWALK ELEVATION



CONCRETE REPLACEMENT @ EXISTING PARAPET & EXISTING SIDEWALK ELEVATION



SECTION C-C

NOTES:

- * Exist. reinforcement bars & anchor bolts extending into the removal areas shall be cleaned, straightened and incorporated into the new construction. Any reinforcement bars or anchor bolts that are damaged during concrete removal shall be replaced with approved bar splicer or anchorage system. Cost included with Concrete Removal.
- Hatched areas indicate concrete sections to be removed and replaced. Perimeters of concrete removal areas shall be saw cut $\frac{3}{4}$ " prior to the removal of concrete.

DESIGNED	S.D.H.
CHECKED	J.A.Z.
DRAWN	M.S.M.
CHECKED	S.D.H.

PARAPET & SIDEWALK SECTIONS & DETAILS
 IL RTE. 137 (BUCKLEY ROAD)
 OVER DES PLAINES RIVER
 FAP 352 (IL 137), SECTION 56 B-1-2
 LAKE COUNTY
 STATION 64+63.88
 S.N. 049-0063
 DATE: 01-14-09
 GRAEF, ANHALT, SCHLOEMER & ASSOCIATES INC
 CHICAGO ILLINOIS

c:\jobs2008\plot\2006-3028.44\00\063_3028-S7.dgn
 1/12/2009