

GENERAL NOTES

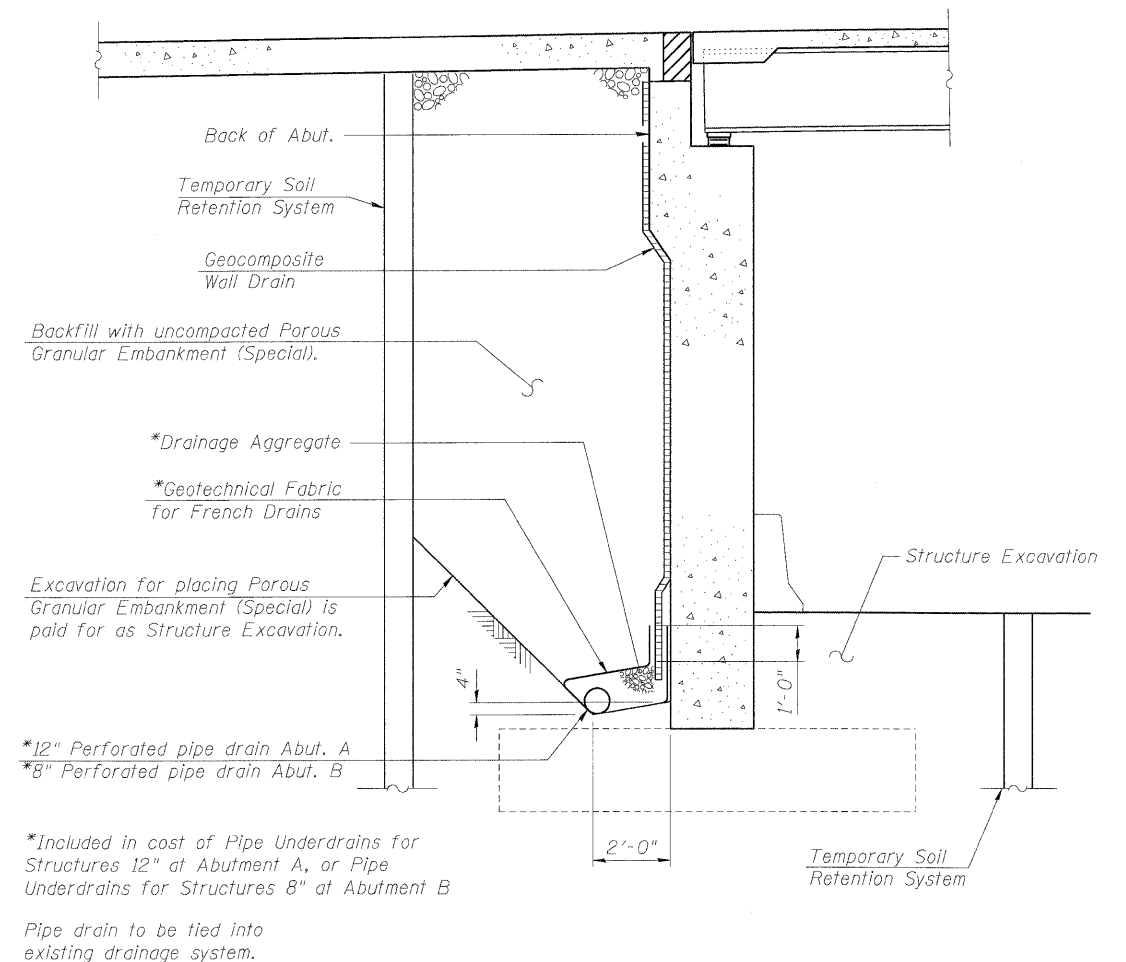
- Fasteners shall be AASHTO M164 Type 1, hot dip galvanized bolts. Bolts $\frac{7}{8}$ in. ϕ , holes $\frac{15}{16}$ in. ϕ , unless otherwise noted.
- Calculated weight of Structural Steel = 351,481 lb. (M270 Grade 50), 36,234 lb. (M270 Grade 36).
- All new structural steel shall be galvanized. See Special Provision for "Hot Dip Galvanizing for Structural Steel."
- No field welding is permitted except as specified in the contract documents.
- Reinforcement bars shall conform to the requirements of ASTM A 706 Gr 60 (IL Modified). See Special Provisions.
- Reinforcement bars designated (E) shall be epoxy coated.
- Plan dimensions and details relative to existing plans are subject to routine variations. The Contractor shall field verify existing dimensions and details affecting new construction and make necessary approved adjustments prior to construction or ordering of materials. Such variations shall not be cause for additional compensation for a change in scope of the work, however, the Contractor will be paid for the quantity actually furnished based upon the unit price bid for the work.
- Bearing seat surfaces shall be constructed or adjusted to their designated elevations within a tolerance of $\frac{1}{8}$ inch (0.01 ft.). Adjustment shall be made either by grinding the surface or by shimming the bearings.
- Concrete Sealer shall be applied to the designated areas of the abutments and piers as follows: Abutments-all exposed surfaces, Piers-all exposed surfaces, except track side.
- The existing structural steel coating contains lead. The Contractor shall take appropriate precautions to deal with the presence of lead on this project.
- Attachments to galvanized members shall be properly insulated to prevent galvanic corrosion.
- Slip forming of parapets is not allowed.
- Areas of the existing bridge have permanent protective shield in place. If any part of the existing permanent protective shield system is to be re-used as temporary protective shield, the Contractor shall submit design calculations to the Engineer proving the system meets the requirements of Article 501.03 of the Standard Specifications. The calculations shall be prepared and sealed by an Illinois Licensed Structural Engineer.
- Existing permanent shield, if not re-used as described above, is to be completely removed. Cost to be included with Removal of Existing Superstructures.

TOTAL BILL OF MATERIAL

ITEM	UNIT	SUPER	SUB	TOTAL
Porous Granular Embankment (Special)	Cu. Yd.	-	1,100	1,100
Removal of Existing Superstructures	L. Sum	0.5	-	0.5
Concrete Removal	Cu. Yd.	-	291	291
Protective Shield	Sq. Yd.	1,756	-	1,756
Structure Excavation	Cu. Yd.	-	1,315	1,315
Concrete Structures	Cu. Yd.	-	408	408
Concrete Superstructure	Cu. Yd.	528	-	528
Bridge Deck Grooving	Sq. Yd.	1,060	-	1,060
Protective Coat	Sq. Yd.	1,636	-	1,636
Furnishing and Erecting Structural Steel	L. Sum	0.6	-	0.6
Stud Shear Connectors	Each	4,710	-	4,710
Reinforcement Bars, Epoxy Coated	Pound	95,470	36,150	131,620
Bar Splicers	Each	617	89	706
Bridge Fence Railing	Foot	388	-	388
Name Plates	Each	-	1	1
Preformed Joint Strip Seal	Foot	138	-	138
Elastomeric Bearing Assembly, Type I	Each	22	-	22
Anchor Bolts, 1 1/4"	Each	88	-	88
Concrete Sealer	Sq. Ft.	-	7,130	7,130
Epoxy Crack Injection	Foot	-	162	162
Geocomposite Wall Drain	Sq. Yd.	-	345	345
Pipe Underdrains for Structures 8"	Foot	-	67	67
Pipe Underdrains for Structures 12"	Foot	-	66	66
Drainage Scuppers, DS-II	Each	4	-	4
Temporary Soil Retention System	Sq. Ft.	-	4,788	4,788
Structural Repair of Concrete (Depth Equal to or Less Than 5 Inches)	Sq. Ft.	-	191	191
Remove, Store, and Re-erect Overhead Sign Structure-Bridge Mounted	Each	1	-	1
Drainage System	L. Sum	-	0.7	0.7

INDEX OF SHEETS

- SA1 General Plan and Elevation
- SA2 General Notes & Bill of Material
- SA3 Stage Construction Details I
- SA4 Stage Construction Details II
- SA5 Temporary Barrier
- SA6 Top of Slab Elevations I
- SA7 Top of Slab Elevations II
- SA8 Top of Slab Elevations III
- SA9 Deck Plan
- SA10 Cross Section
- SA11 Parapet Details
- SA12 Superstructure Bill of Materials
- SA13 Bridge Fence Railing
- SA14 Expansion Joint Details
- SA15 Drainage Scupper, DS-II
- SA16 Framing Plan
- SA17 Structural Steel Details I
- SA18 Structural Steel Details II
- SA19 Elastomeric Bearing Type I & Fixed Bearing
- SA20 Abutment A Removals
- SA21 Abutment A
- SA22 Abutment A Details
- SA23 Abutment B Removals
- SA24 Abutment B
- SA25 Abutment B Details
- SA26 Temporary Soil Retention
- SA27 Pier 1 Repair
- SA28 Pier 2 Repair
- SA29 Bar Splicer Assembly Details
- SA30 Bridge Drainage System
- SA31 Bridge Mounted Sign Connection



SECTION THRU ABUTMENT

Showing Drainage (typ. at both abutments)

FILE NAME = 2161064-SA02-DN.dgn



PLOT DATE = 1/12/2009

DESIGNED - JRW	REVISED -
DRAWN - JRW	REVISED -
CHECKED - MBQ	REVISED -
DATE - 1/13/09	REVISED -

**STATE OF ILLINOIS
DEPARTMENT OF TRANSPORTATION**

GENERAL NOTES & BILL OF MATERIAL

F.A.P. 392 FRANKLIN CONNECTOR (AT 26th STREET)
STRUCTURE NO. 016-1064

SCALE: NTS

SHEET NO. SA2 OF SA31 SHEETS

STA. 11+81.01

F.A.P. RTE.	SECTION	COUNTY	TOTAL SHEETS	SHEET NO.
392	1717-2-3B-R	COOK	114	49
			CONTRACT NO. 62197	
FED. ROAD DIST. NO. 7 ILLINOIS FED. AID PROJECT				