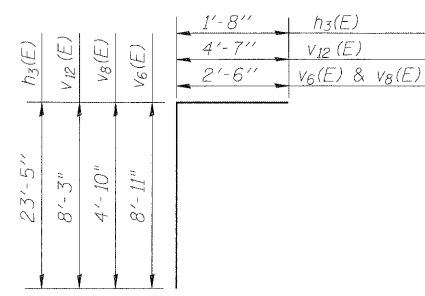
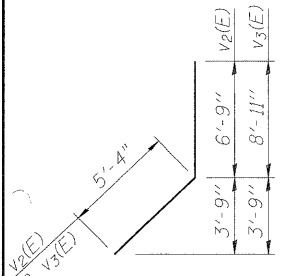


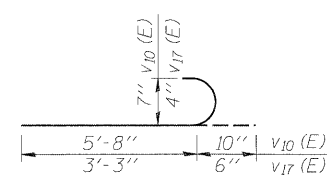
BAR v<sub>1</sub>(E)



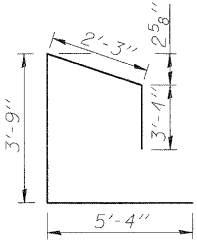
BARS v<sub>6</sub>(E), v<sub>8</sub>(E) & v<sub>12</sub>(E)



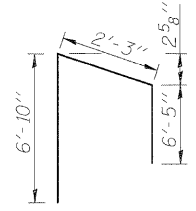
BARS v<sub>2</sub>(E) & v<sub>3</sub>(E)



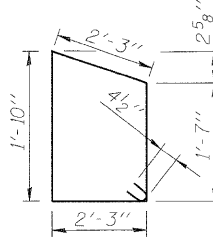
BAR v<sub>10</sub>(E) & v<sub>17</sub>(E)



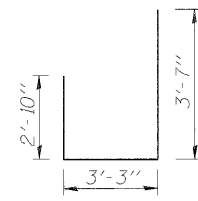
BAR h<sub>6</sub>(E)



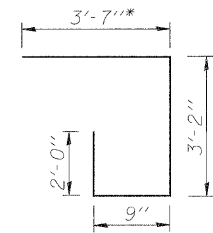
BAR h<sub>7</sub>(E)



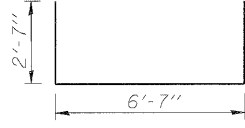
BAR h<sub>8</sub>(E)



BAR h<sub>9</sub>(E)



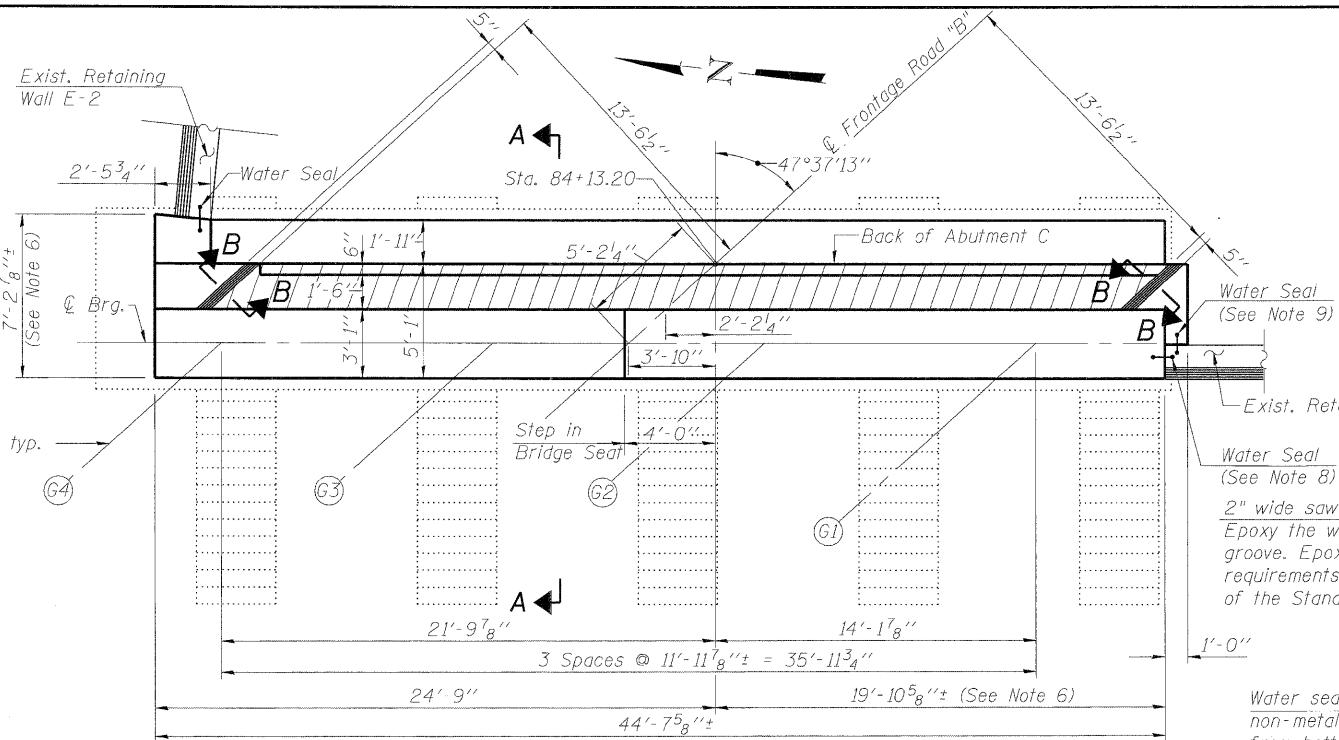
BAR h<sub>10</sub>(E)



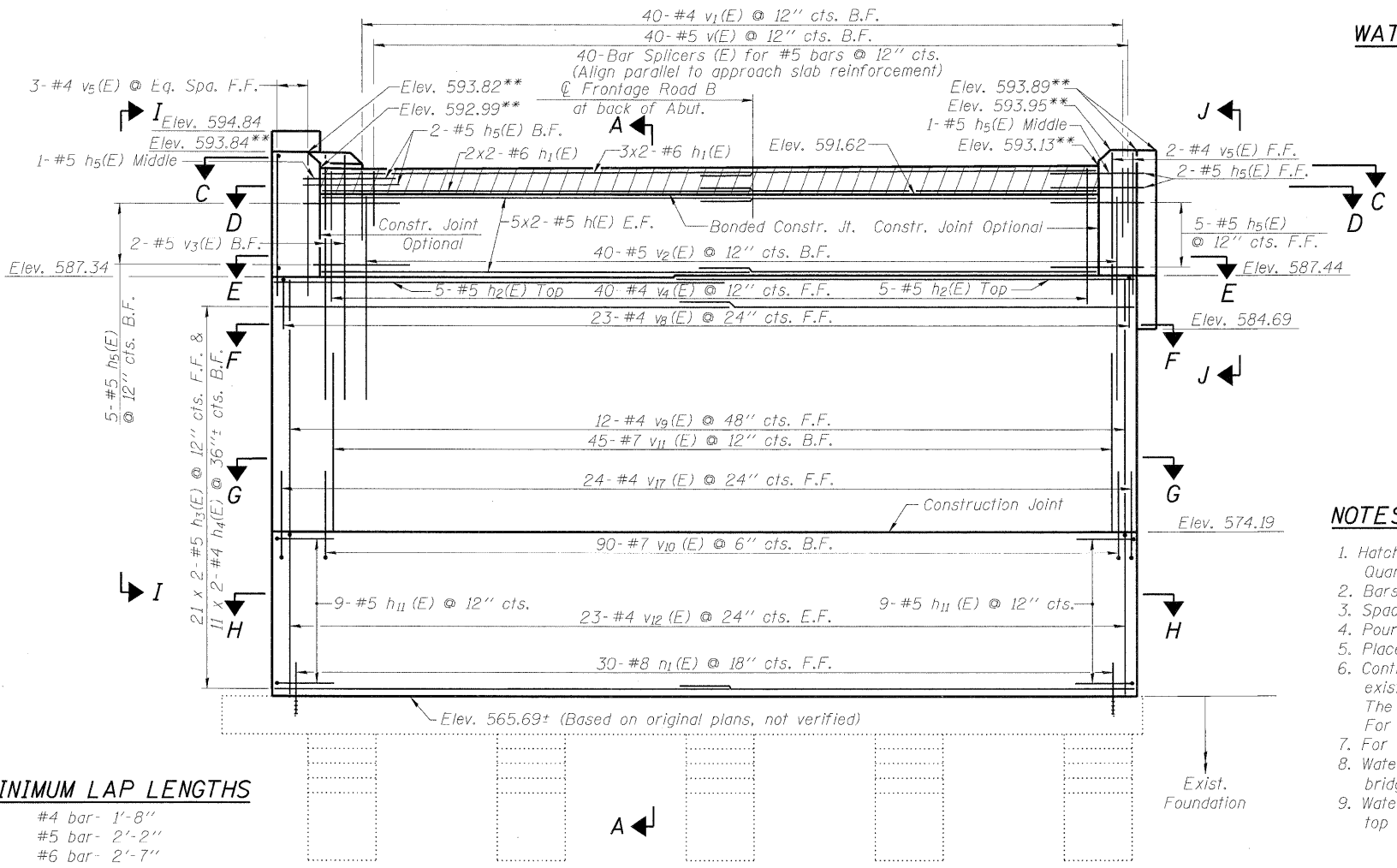
BAR h<sub>11</sub>(E)

**MINIMUM LAP LENGTHS**

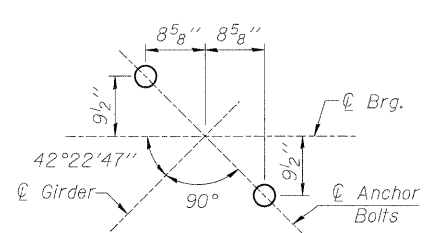
- #4 bar- 1'-8"
- #5 bar- 2'-2"
- #6 bar- 2'-7"
- #7 bar- 3'-5"



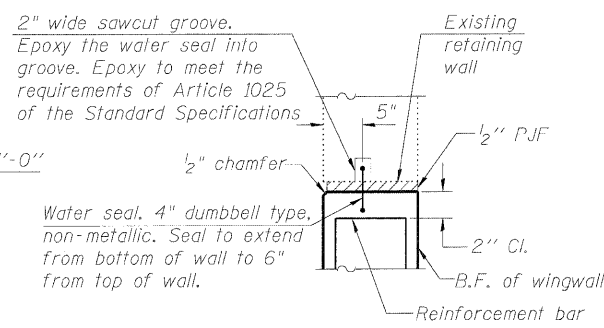
**PLAN**



**ELEVATION**



**ANCHOR BOLT PATTERN  
(TYPICAL AT ALL GIRDERS)  
ABUTMENT C**



**WATER SEAL DETAIL**

**ABUTMENT C  
BILL OF MATERIAL**

Bar	No.	Size	Length	Shape
h <sub>1</sub> (E)	20	#5	21'-3"	—
h <sub>1</sub> (E)	10	#6	21'-7"	—
h <sub>2</sub> (E)	10	#5	23'-8"	—
h <sub>3</sub> (E)	42	#5	23'-5"	—
h <sub>4</sub> (E)	22	#4	23'-5"	—
h <sub>5</sub> (E)	16	#5	5'-0"	—
h <sub>6</sub> (E)	7	#5	14'-8"	—
h <sub>7</sub> (E)	14	#5	15'-6"	—
h <sub>8</sub> (E)	2	#4	8'-8"	—
h <sub>9</sub> (E)	3	#5	9'-8"	—
h <sub>10</sub> (E)	6	#5	9'-6"	—
h <sub>11</sub> (E)	18	#5	11'-9"	—
v <sub>1</sub> (E)	40	#5	3'-11"	—
v <sub>1</sub> (E)	40	#4	3'-10"	—
v <sub>2</sub> (E)	40	#5	12'-1"	—
v <sub>3</sub> (E)	2	#5	14'-3"	—
v <sub>4</sub> (E)	40	#4	6'-7"	—
v <sub>5</sub> (E)	5	#4	7'-4"	—
v <sub>6</sub> (E)	5	#5	11'-5"	—
v <sub>7</sub> (E)	2	#4	8'-11"	—
v <sub>8</sub> (E)	23	#4	7'-4"	—
v <sub>9</sub> (E)	12	#4	12'-11"	—
v <sub>10</sub> (E)	90	#7	6'-6"	—
v <sub>11</sub> (E)	45	#7	9'-3"	—
v <sub>12</sub> (E)	46	#4	12'-10"	—
v <sub>13</sub> (E)	6	#4	13'-0"	—
v <sub>14</sub> (E)	2	#4	19'-5"	—
v <sub>15</sub> (E)	7	#4	20'-6"	—
v <sub>16</sub> (E)	6	#4	8'-4"	—
v <sub>17</sub> (E)	24	#4	3'-9"	—
d <sub>1</sub> (E)	14	#5	4'-1"	—
n <sub>1</sub> (E)	30	#8	2'-9"	—
Concrete Sealer		Sq. Ft.	1,460	
Concrete Structures		Cu. Yd.	187	
Reinforcement Bars, Epoxy Coated		Pound	7,400	

- LEGEND:**
- B.F. = Back Face
  - E.F. = Each Face
  - F.F. = Front Face
  - P.J.F. = Preformed Joint Filler
  - \* = Cut bar in field as necessary
  - \*\* = Elevation applies at F.F. of backwall

**NOTES:**

1. Hatched area to be poured after superstructure falsework has been removed. Quantity of concrete included with "Concrete Superstructure".
2. Bars indicated 3 x 2- #5 etc. indicates 3 lines of bars with 2 lengths per line.
3. Space reinforcement in bearing seat to miss anchor bolts.
4. Pour steps monolithically with bearing seat.
5. Place Bar Splicers (E) parallel to  $\phi$  of Frontage Road "B".
6. Contractor to verify dimension. Contractor shall install a water seal between existing retaining walls and new abutment where indicated on the plan. The cost of the water seal installation shall be included with "Concrete Structures". For additional information, see Water Seal Detail.
7. For Bar Splicer Details, see Sheet No. SB22.
8. Water seal shall extend from existing foundation (Elev. 565.69) to 6" below bridge seat (Elev. 586.94).
9. Water seal shall extend from 6" below bridge seat (Elev. 586.94) to 6" below top of wall (Elev. 593.39).