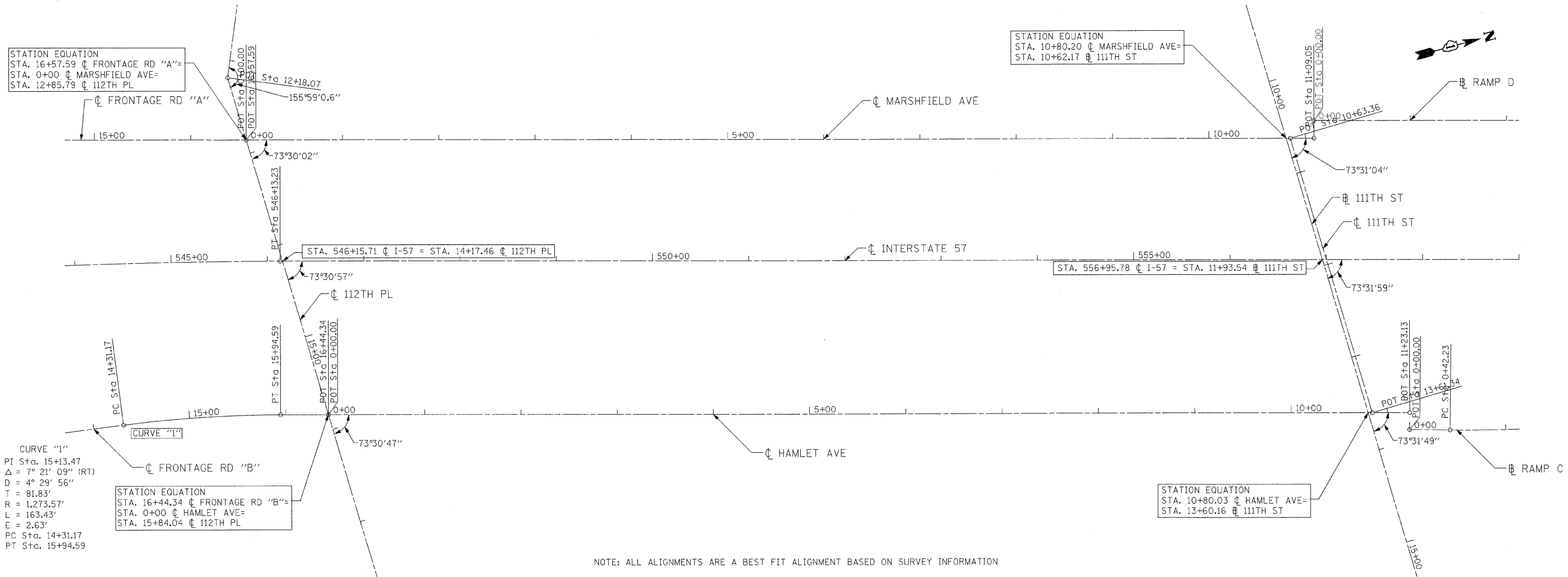


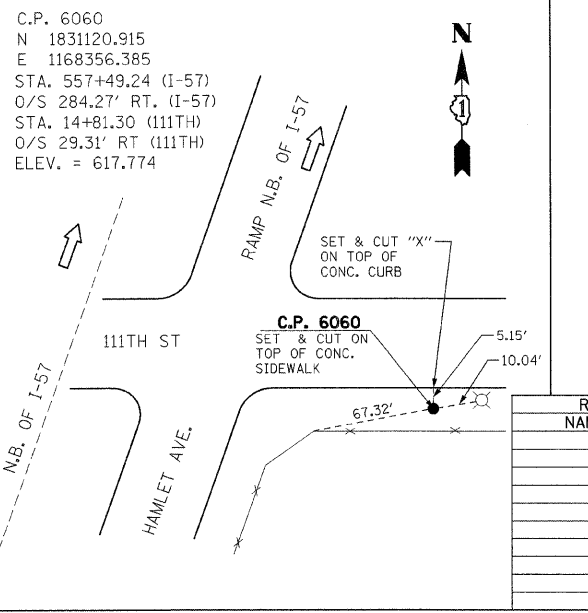
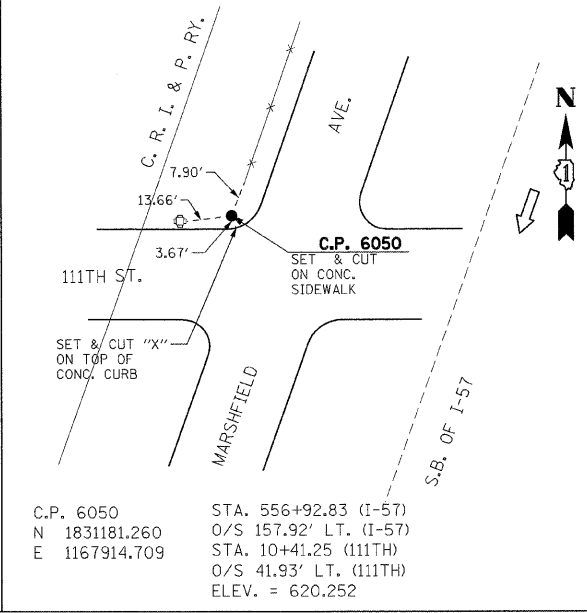
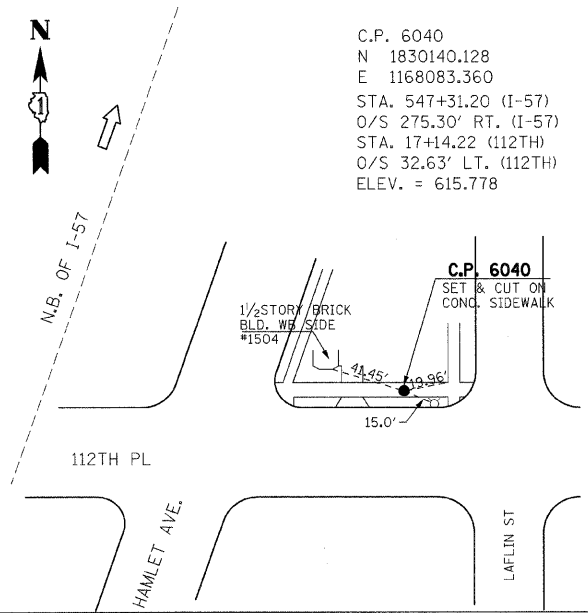
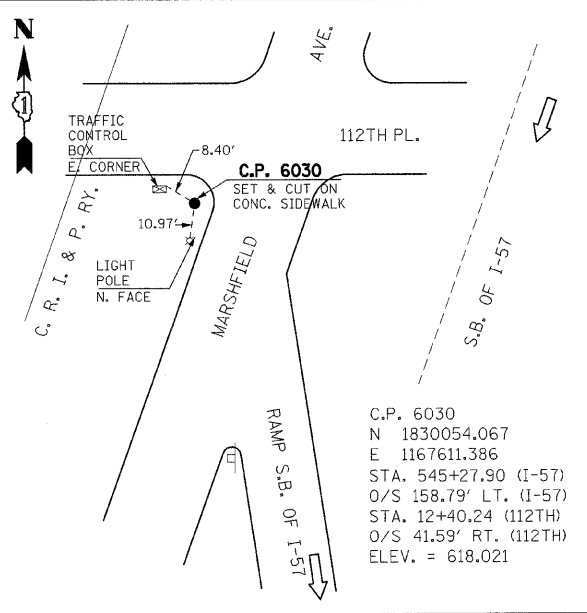
F.A.I. RTE.	SECTION	COUNTY	TOTAL SHEETS	SHEET NO.
57	2021.1B-R	COOK	101	015
STA. TO STA.		FED. ROAD DIST. NO. 1 ILLINOIS FED. AID PROJECT		
CONTRACT NO. 62532				

HAMLET AVE AND MARSHFIELD AVE TIE DATA

FRONTAGE ROAD	FRONTAGE RD STA.	MAINLINE STA.	MAINLINE O/S	NORTHING	EASTING
MARSHFIELD AVE	0+00.00	545+79.10	126.36' LT	1,830,096.788760	1,167,655.879998
HAMLET AVE	0+00.00	546+62.97	159.73' RT	1,830,104.248481	1,167,954.038967



NOTE: ALL ALIGNMENTS ARE A BEST FIT ALIGNMENT BASED ON SURVEY INFORMATION



BENCHMARK DESCRIPTIONS

- BENCH MARK LOCATED AT THE INTERSECTION OF WEST 112TH PLACE, WEST MONTERY AVENUE AND SOUTH MARSHFIELD AVE.. BENCH MARK IS A CROSS NOTCH ON WEST FLANGE BOLT OF FIRE HYDRANT LOCATED AT THE NORTHWEST CORNER OF INTERSECTION, ELEVATION= 619.17 FEET.
- BENCH MARK LOCATED AT THE INTERSECTION OF WEST 111TH ST AND S. HAMLET AVE. BENCH MARK IS A CROSS-NOTCH ON NORTH FLANGE BOLT OF THE FIRE HYDRANT LOCATED AT THE SOUTHEAST CORNER OF INTERSECTION, ELEVATION = 619.37 FEET.

ILLINOIS DEPARTMENT OF TRANSPORTATION
111TH STREET OVER
F.A.I ROUTE 57 (INTERSTATE 57)

ALIGNMENT & TIES

SCALE: 1"=50' DRAWN BY: BRH
DATE: 01/16/09 CHECKED BY: ACL

TENG
TENG & ASSOCIATES, INC.
ENGINEERS/ARCHITECTS/PLANNERS
205 N. MICHIGAN AVE., CHICAGO, IL 60601
TELEPHONE: 312/616-0000

REVISIONS	
NAME	DATE

HECHTBR
 1:2,3,4,5,6,7,8,9,10,11,12,13,14,15,16,17,18,19,20,21,22,23,24,25,26,27,28,29,30,31,32,33,34,35,36,37,38,39,40,41,42,43,44,45,46,47,48,49,50,51,52,53,54,55,56,57,58,59,60,61,62
 \\\ALTOON8\DOCN...\\VTPO005\VF\DOCN...\\VTBO004\DOCN...\\VEH0002\DOCN...\\ALTOON2\DOCN...
 I:\6-2009_1049249 I:\DOCUMENT\930860\CVL\DOCN\ALTOON6\DOCN
 I:\6-2009_1049249 I:\DOCUMENT\930860\CVL\DOCN\ALTOON6\DOCN
 I:\6-2009_1049249 I:\DOCUMENT\930860\CVL\DOCN\ALTOON6\DOCN