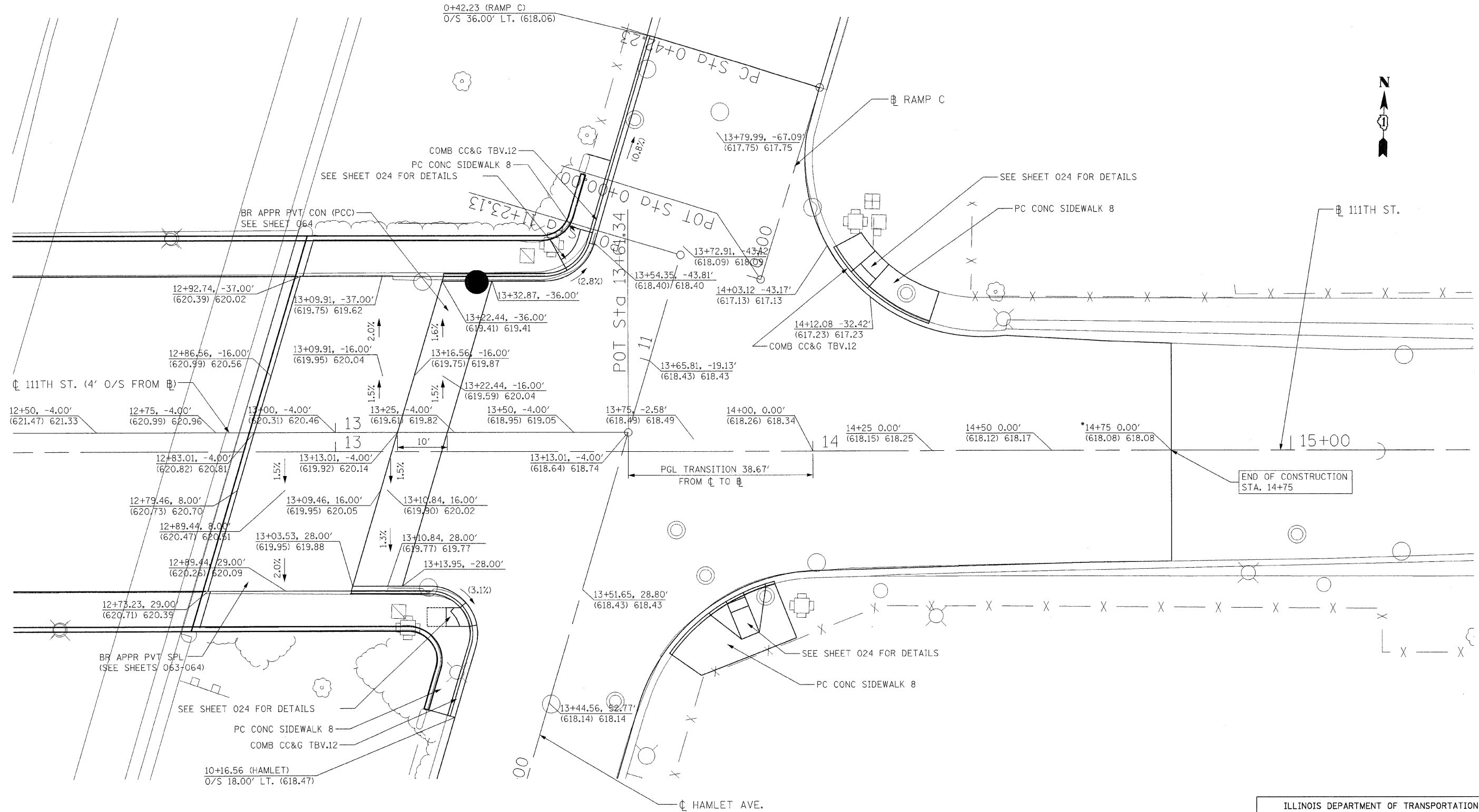


F.A.I. RTE.	SECTION	COUNTY	TOTAL SHEETS	SHEET NO.
57	2021.1B-R	COOK	101	022
STA.		TO STA.		
FED. ROAD DIST. NO. 1		ILLINOIS	FED. AID PROJECT	
CONTRACT NO. 62532				



### PROPOSED INTERSECTION GRADING PLAN FOR 111TH STREET AND HAMLET AVE.

NOTE: ALL STATIONING MEASURED OFF 111TH STREET Ⓡ UNLESS OTHERWISE NOTED.  
 • CONTRACTOR SHALL VERIFY EXISTING ELEVATION PRIOR TO CONSTRUCTION

**LEGEND**  
 STATION, OFFSET  
 (EXIST. ELEV.) PROP. ELEV.  
 (X.X%) - EXISTING SLOPE

REVISIONS	
NAME	DATE

ILLINOIS DEPARTMENT OF TRANSPORTATION  
 111TH STREET OVER  
 F.A.I. ROUTE 57 (INTERSTATE 57)  
**111TH AND HAMLET AVE.  
 INTERSECTION GRADING PLAN**

SCALE: 1"=10'  
 DATE: 01/16/09  
 DRAWN BY: BRH  
 CHECKED BY: ACL

**TENG**  
 TENG & ASSOCIATES, INC.  
 ENGINEERS, ARCHITECTS, PLANNERS  
 205 N. MICHIGAN AVE., CHICAGO, IL 60601  
 TELEPHONE: 312/616-0000

\\AL\T0008\8.DGN, \\DRA008\6.DGN, \\TTR000\4.DGN, \\DRA007\2.DGN, \\TPO000\1.DGN, \\R000\0\BEE.DGN  
 1-6-2009, 14:52:20  
 T:\DOCUMENT\930860\0\CWL\JDN\RD\WOODR.DGN  
 1 2 3 4 5 6 7 8 9 10 11 12 13 14 15 16 17 18 19 20 21 22 23 24 25 26 27 28 29 30 31 32 33 34 35 36 37 38 39 40 41 42 43 44 45 46 47 48 49 50 51 52 53 54 55 56 57 58 59 60 61 62