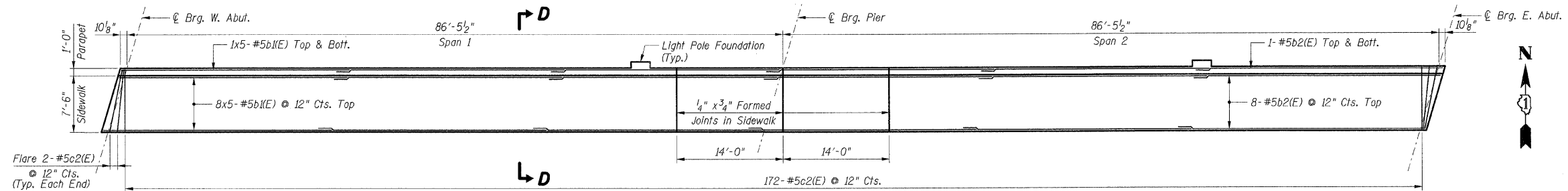
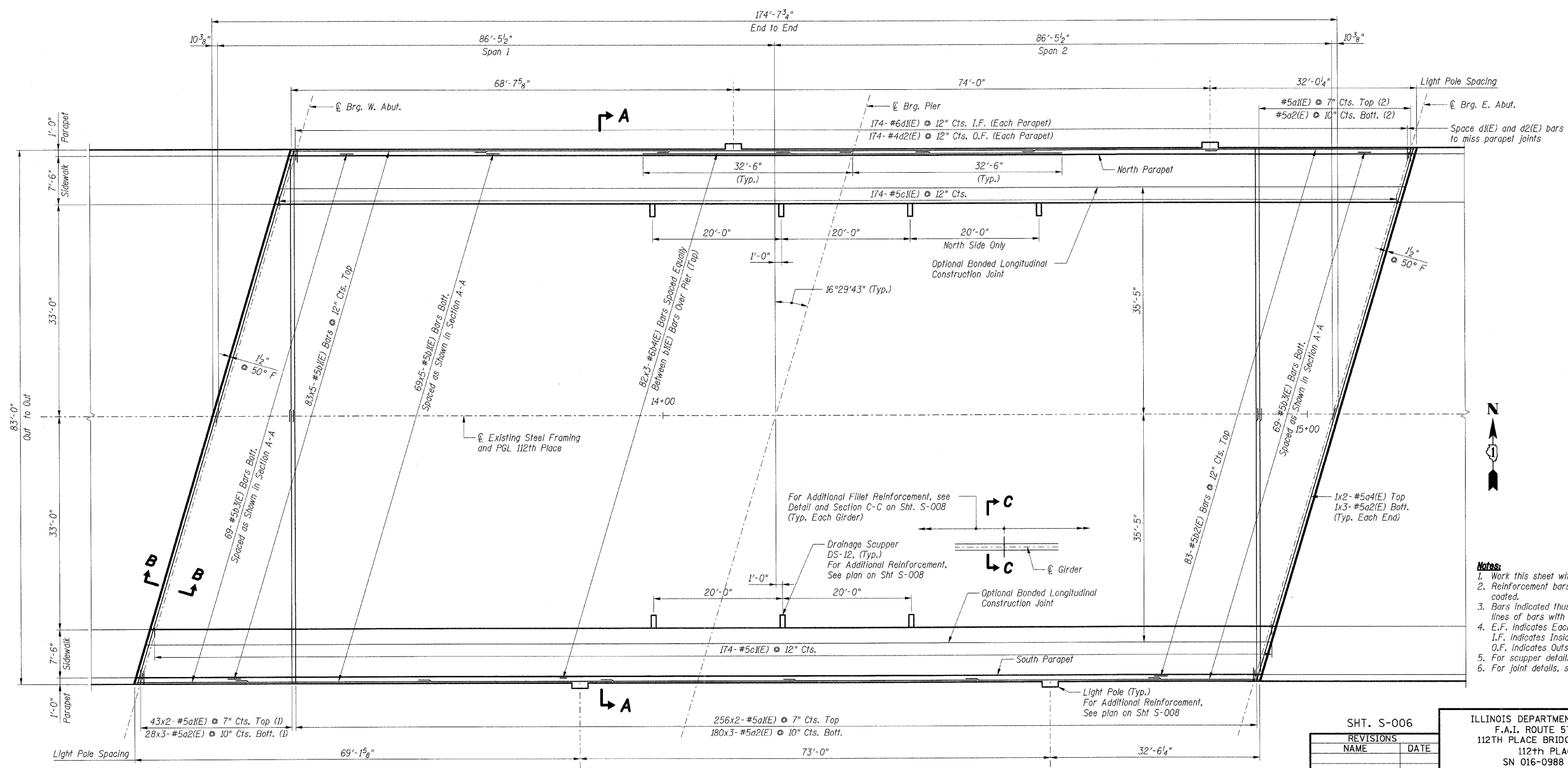


F.A.I. RTE.	SECTION	COUNTY	TOTAL SHEETS	SHEET NO.
57	1920.1B-R	COOK	101	072
STA.		TO STA.		
FED. ROAD DIST. NO. 1		ILLINOIS FED. AID PROJECT		
CONTRACT NO. 62533				



SIDEWALK PLAN
(North Sidewalk Shown - South Sidewalk Opposite Hand)



DECK PLAN

- Notes:**
1. Work this sheet with Shts. S-007 & S-008.
 2. Reinforcement bars designated (E) shall be epoxy coated.
 3. Bars indicated thus 30 x 2-#5 etc. indicates 30 lines of bars with 2 lengths per line.
 4. E.F. indicates Each Face
I.F. indicates Inside Face
O.F. indicates Outside Face
 5. For scupper details, see Sht. S-010.
 6. For joint details, see Sht. S-009.

SHT. S-006	
REVISIONS	DATE
NAME	DATE

ILLINOIS DEPARTMENT OF TRANSPORTATION
F.A.I. ROUTE 57 (INTERSTATE 57)
112TH PLACE BRIDGE DECK REPLACEMENT
112th PLACE OVER I-57
SN 016-0988 STA. 546+15.56
COOK COUNTY

DECK PLAN

DATE: 01/16/09

DRAWN BY: TMH
CHECKED BY: JLR

LAP LENGTHS	
Bar Size	Min. Lap
#5	1'-8"
#6	2'-0"

Reinforcing Notes:

- (1) Cut bars to fit in field and use remainder in opposite end of deck.
- (2) Use remainder of bars from opposite end of deck.

S:\BORDER.DWG... \ALTD0084.DWG... \SIRCONSV.DWG... \ALTD0084.DWG... \VFPP0005.DWG... \SEDO001E.T061
 2-27-2009, 10:35:21
 PLOT FILE: I:\DOCUMENTS\9308681\STRUCT\OR\ORP0001.DWG
 color: T061; KA; STANDARD; TENG DATA; COLOR TABLE: TBL
 pen: T061; I/A