

F.A.P. RTE.	SECTION	COUNTY	TOTAL SHEETS	SHEET NO.
335	146RS-3	MCHENRY	29	1
FED. ROAD DIST. NO. 1	ILLINOIS	CONTRACT NO. 62905		

29+1=30

D-91-109-05

STATE OF ILLINOIS  
DEPARTMENT OF TRANSPORTATION  
DIVISION OF HIGHWAYS

**PROPOSED HIGHWAY PLANS**

F.A.P. ROUTE 335 : IL 176

IL 31 TO FOX RIVER

SECTION: 146RS-3

RESURFACING (MAINTENANCE)

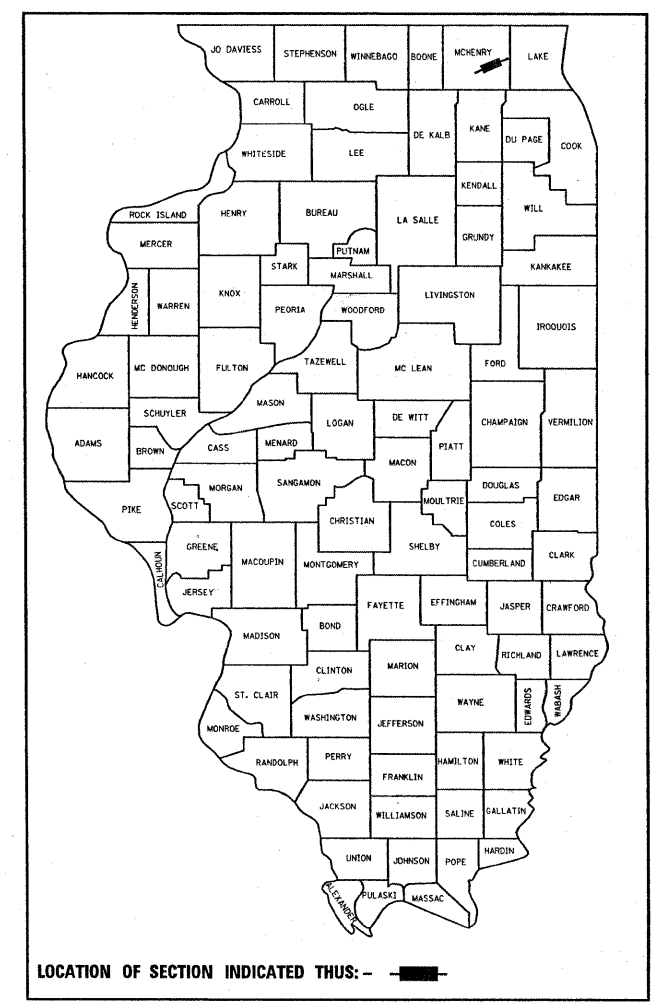
PROJECT: *ESP-0335(011)*

MCHENRY COUNTY

C-91-109-05

FOR INDEX OF SHEETS, SEE SHEET NO. 2

PROJECT LOCATED IN THE CITY OF CRYSTAL LAKE AND VILLAGE OF PRAIRIE GROVE.



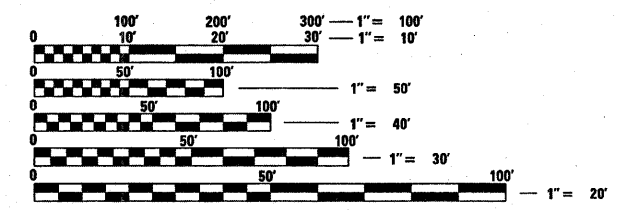
PROJECT BEGINS:  
STATION: 24+58

PROJECT ENDS:  
STATION: 230+83

TRAFFIC DATA

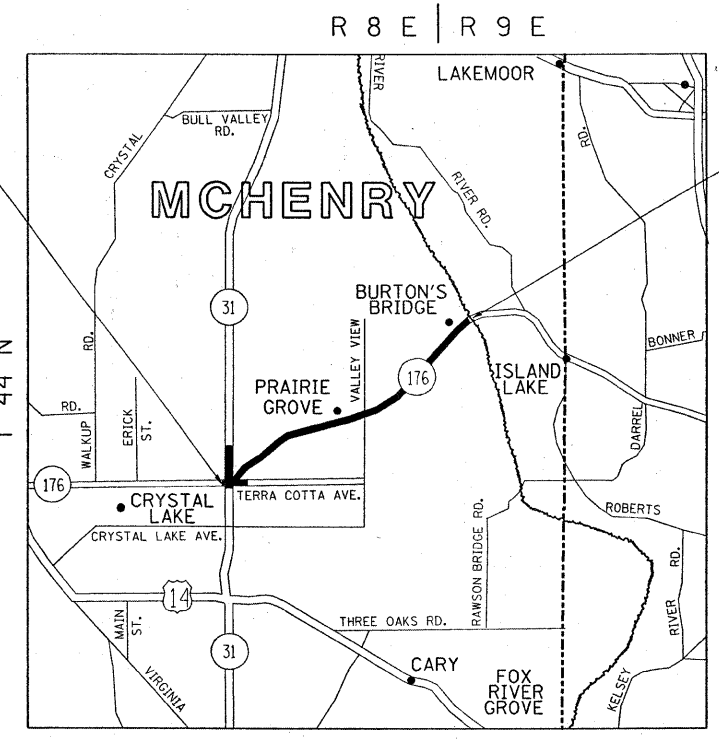
IL 31  
2007 ADT= 26,200  
POSTED SPEED= 40 MPH

IL 176  
2007 ADT= 16,100  
POSTED SPEED= 40-50 MPH



FULL SIZE PLANS HAVE BEEN PREPARED USING STANDARD ENGINEERING SCALES. REDUCED SIZED PLANS WILL NOT CONFORM TO STANDARD SCALES. IN MAKING MEASUREMENTS ON REDUCED PLANS, THE ABOVE SCALES MAY BE USED.

J.U.L.I.E.  
JOINT UTILITY LOCATION INFORMATION FOR EXCAVATION  
1-800-892-0123  
OR 811



NUNDA TOWNSHIP

GROSS AND NET LENGTH OF PROJECT = 20,625 FEET (3.91 MILES)

PROJECT ENGINEER: JENPAI CHANG (847) 705-4432  
PROJECT MANAGER: KEN ENG

CONTRACT NO. 62905

STATE OF ILLINOIS  
DEPARTMENT OF TRANSPORTATION  
DIVISION OF HIGHWAYS

SUBMITTED JANUARY 12, 20 09

*Diana M. O'Harra*  
DEPUTY DIRECTOR OF HIGHWAYS, REGION ENGINEER

March 13, 20 09  
*Charles G. Ingersoll*  
ENGINEER OF DESIGN AND ENVIRONMENT

March 13, 20 09  
*Christine M. Reed*  
DIRECTOR OF HIGHWAYS, CHIEF ENGINEER

**PRINTED BY THE AUTHORITY OF THE STATE OF ILLINOIS**