

STATE OF ILLINOIS  
DEPARTMENT OF TRANSPORTATION  
DIVISION OF HIGHWAYS  
**PROPOSED  
HIGHWAY PLANS**

F.A.I. RTE.	SECTION	COUNTY	TOTAL SHEETS	SHEET NO.
74	81-(1-2,1,2-2)RS-1&M	ROCK ISLAND	246	1
FED. ROAD DIST. NO.		ILLINOIS	CONTRACT NO. 64A97	

D-92-058-05



FOR INDEX OF SHEETS, SEE SHEET NO. 2

FAI ROUTE 74 (I-74)  
SECTION 81-(1-2,1,2-2)RS-1&M  
PROJECT ESP-074-1(097)001  
ROCK ISLAND COUNTY

C-92-005-09

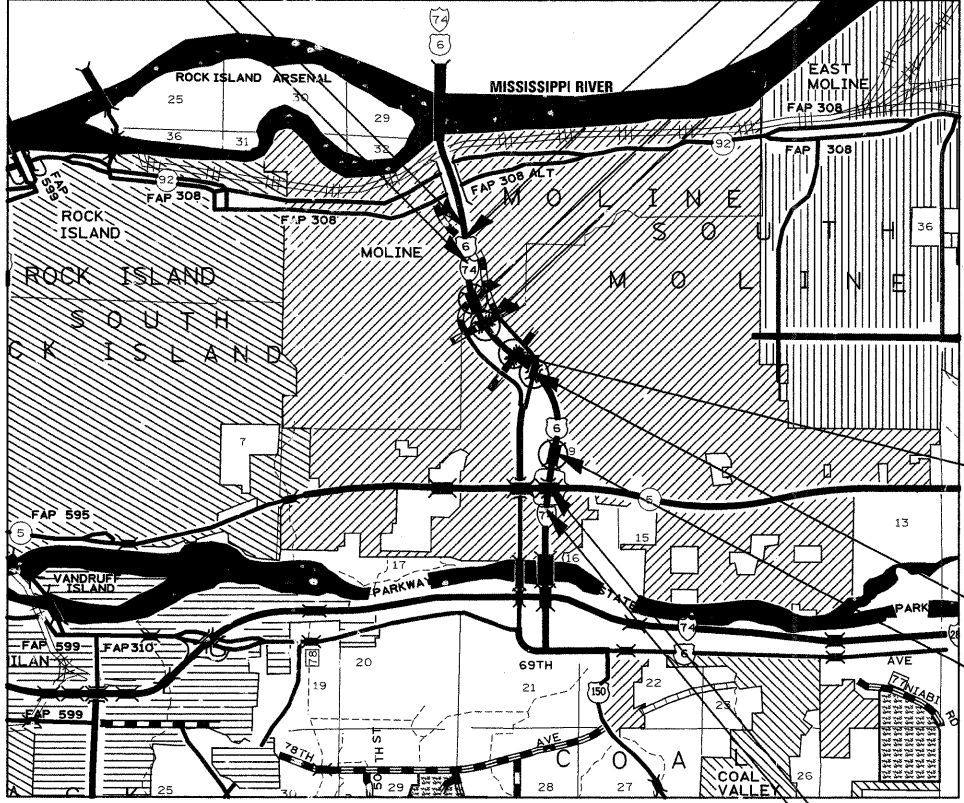
IMPROVEMENT & SECTION BEGINS  
STA 52 + 73.13

BRIDGE REPAIR (12TH STREET)  
SN 081-0101 (SB)  
SN 081-0102 (NB)

BRIDGE REPAIR (19TH STREET)  
SN 081-0099 (SB)  
SN 081-0100 (NB)

BRIDGE REPAIR (19TH STREET)  
SN 081-0103 (NB)  
SN 081-0104 (SB)

BRIDGE REPAIR (23RD AVENUE)  
SN 081-0105



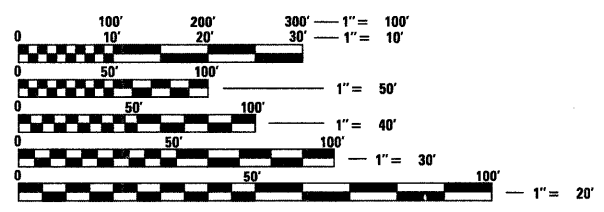
BRIDGE OMISSION (26TH STREET)  
SN 081-0107

BRIDGE REPAIR (27TH STREET)  
SN 081-0108

BRIDGE REPAIR (38TH AVENUE)  
SN 081-0109 (SB)  
SN 081-0110 (NB)

BRIDGE OMISSION (I.L. RTE 5)  
SN 081-0097 & SN 081-0098

IMPROVEMENT & SECTION ENDS  
STA. 211 + 24.79



FULL SIZE PLANS HAVE BEEN PREPARED USING STANDARD ENGINEERING SCALES. REDUCED SIZED PLANS WILL NOT CONFORM TO STANDARD SCALES. IN MAKING MEASUREMENTS ON REDUCED PLANS, THE ABOVE SCALES MAY BE USED.

J.U.L.I.E.  
JOINT UTILITY LOCATION INFORMATION FOR EXCAVATION  
1-800-892-0123  
OR 811

SOUTH MOLINE TOWNSHIP, SECTIONS 9 AND 10  
MOLINE TOWNSHIP, SECTIONS 3,4,9,10,32, AND 33

GROSS LENGTH OF PROJECT = 15,852 LIN. FT. = 3.00 MILES  
NET LENGTH OF PROJECT = 15,852 LIN. FT. = 3.00 MILES

STATE OF ILLINOIS  
DEPARTMENT OF TRANSPORTATION  
DIVISION OF HIGHWAYS

SUBMITTED 2/16 2009

*George F. Ryan*  
DEPUTY DIRECTOR OF HIGHWAYS, REGION ENGINEER

March 13, 2009  
*Charles J. Ingersoll*  
ENGINEER OF DESIGN AND ENVIRONMENT

March 13, 2009  
*Christine M. Reed*  
DIRECTOR OF HIGHWAYS, CHIEF ENGINEER

**PRINTED BY THE AUTHORITY  
OF THE STATE OF ILLINOIS**

PROJECT ENGINEER: REBECCA MARRUFFO

SQUAD LEADER: THOMAS HALLA (815)-284-5993