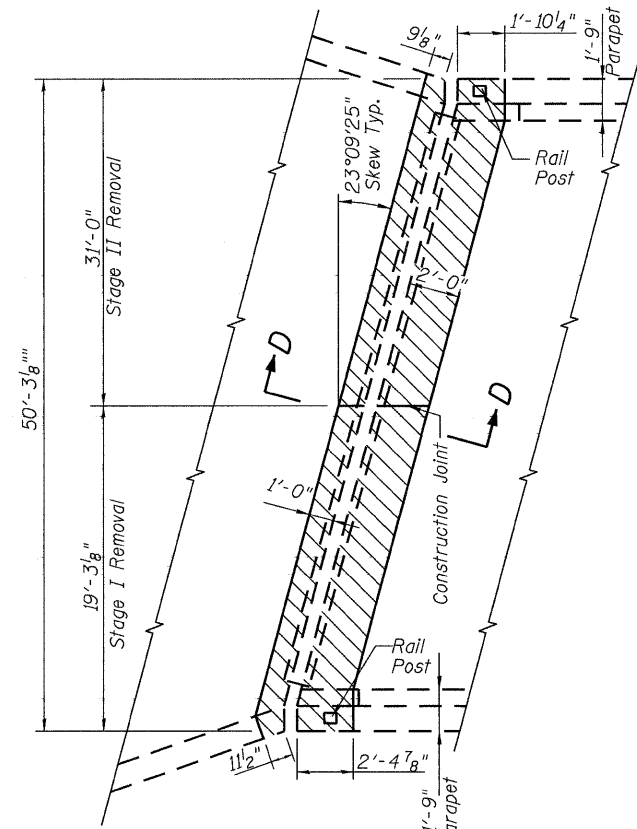


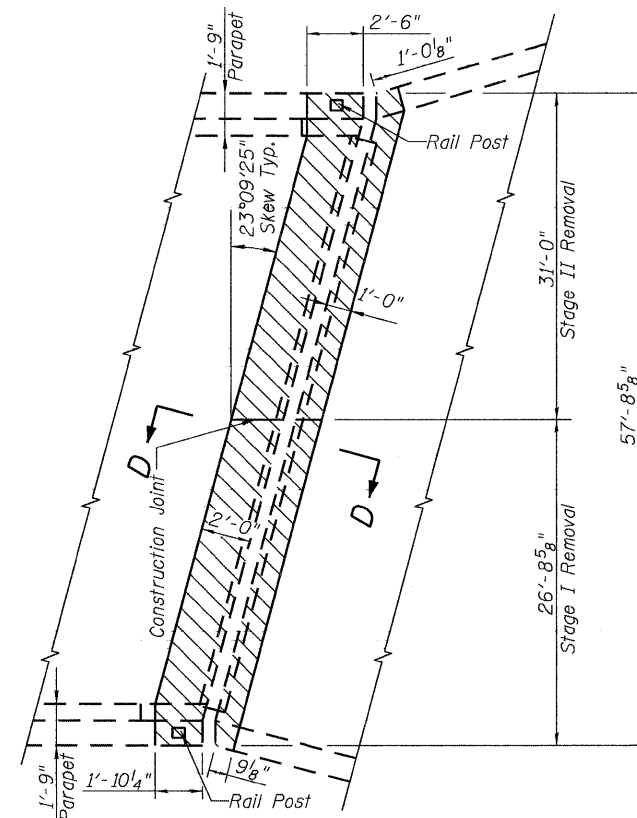
STATE OF ILLINOIS
DEPARTMENT OF TRANSPORTATION

ROUTE NO. FAI 74	SECTION *	COUNTY ROCK ISLAND	TOTAL SHEETS 246	SHEET NO. 215	SHEET NO. 5 11 SHEETS
FED. ROAD DIST. NO. 7		ILLINOIS		FED. AID PROJECT	

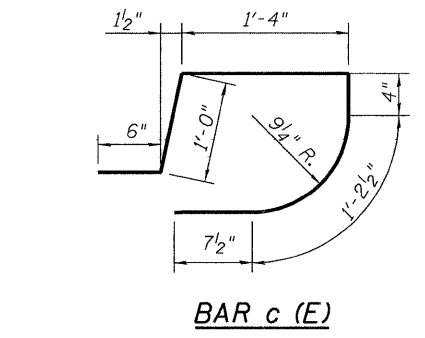
* 81 (1-2, 1, 2-2) RS-1 & M



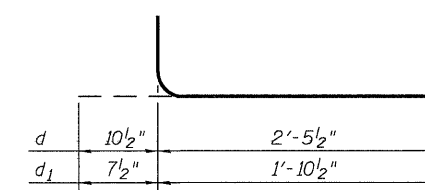
EXISTING PARTIAL PLAN - NORTH ABUTMENT



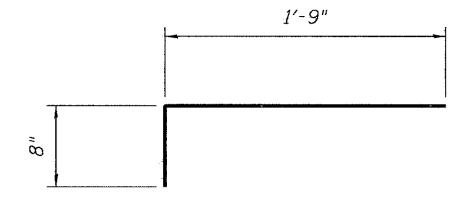
EXISTING PARTIAL PLAN - SOUTH ABUTMENT



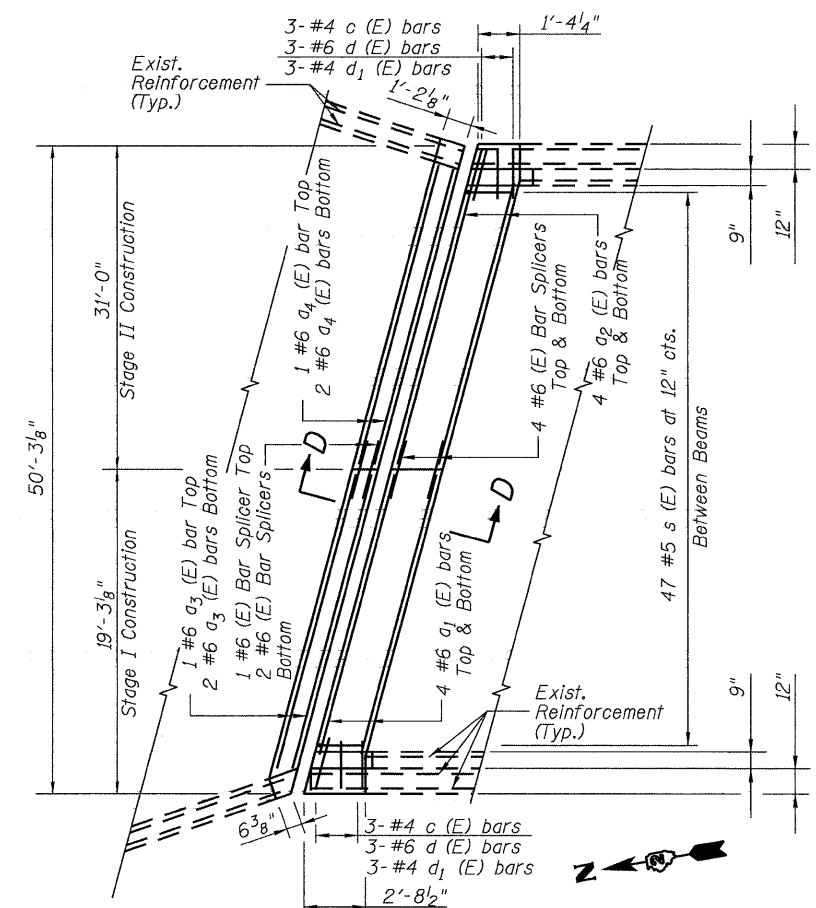
BAR c (E)



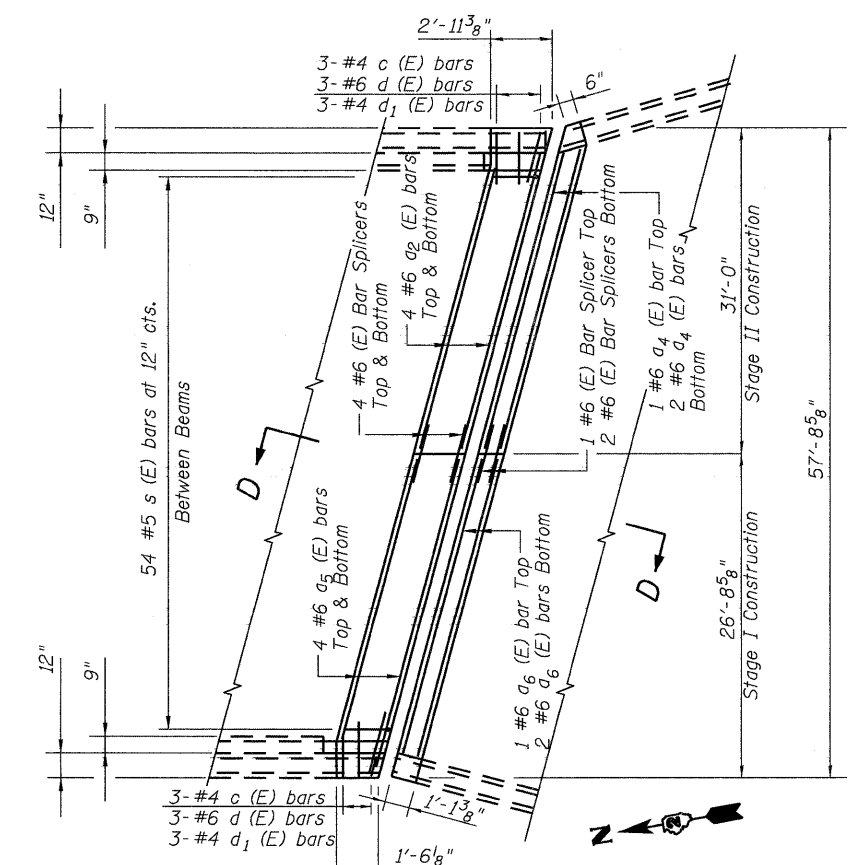
BAR d & d₁ (E)



BAR s (E)



PROPOSED PARTIAL PLAN - NORTH ABUTMENT



PROPOSED PARTIAL PLAN - SOUTH ABUTMENT

BILL OF MATERIAL

BAR	NO.	SIZE	LENGTH	SHAPE
a ₁ (E)	8	#6	19'-3"	—
a ₂ (E)	16	#6	32'-6"	—
a ₃ (E)	3	#6	19'-3"	—
a ₄ (E)	6	#6	32'-6"	—
a ₅ (E)	8	#6	27'-4"	—
a ₆ (E)	3	#6	27'-5"	—
c (E)	12	#4	5'-0"	⌋
d (E)	12	#6	3'-4"	⌋
d ₁ (E)	12	#4	2'-6"	⌋
s (E)	101	#5	2'-5"	⌋
Reinforcement Bars Epoxy Coated			Pound	2230
Concrete Removal			Cu. Yd.	16.6
Concrete Superstructure			Cu. Yd.	16.6
Bar Splicer			Each	22

For bar splicer assembly details see sheet 9 of 11.

For Section D-D, see sheet 6 of 11.

For rail post details see sheet 11 of 11.

LEGEND

- Concrete Removal
- Concrete Superstructure

JOINT RECONSTRUCTION DETAILS
F.A.I. 74 (OVER 38TH AVE.)
ROCK ISLAND COUNTY
STRUCTURE NO. 081-0109

DESIGNED	DFM
CHECKED	DFM
DRAWN	EBS
CHECKED	DFM