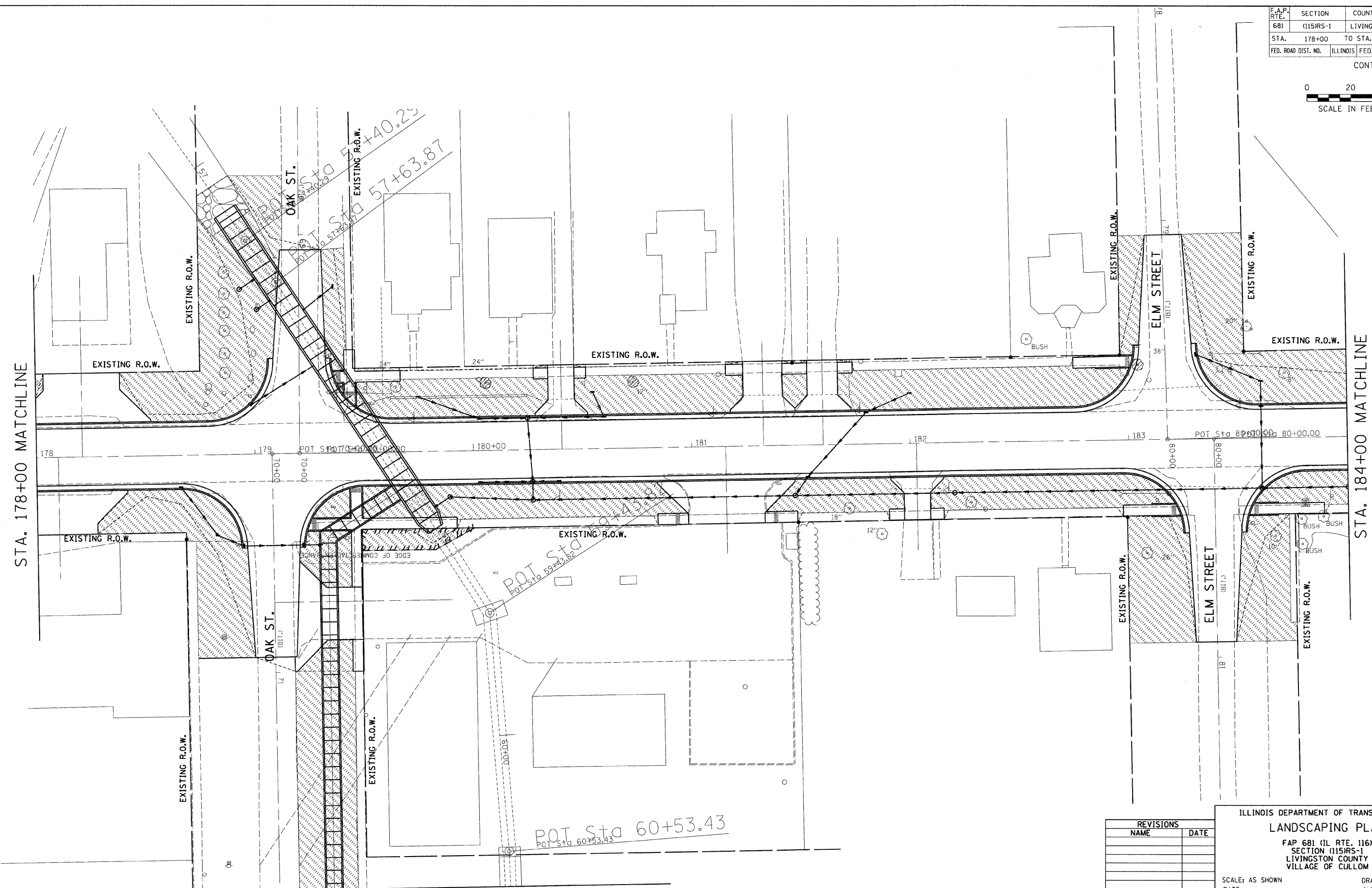
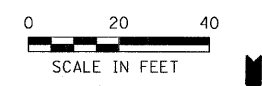


| | | | | |
|-------------|----------------|---|--------------|-----------|
| F.A.P. RTE. | SECTION | COUNTY | TOTAL SHEETS | SHEET NO. |
| 681 | (115)RS-1 | LIVINGSTON | 279 | 114 |
| STA. 178+00 | TO STA. 184+00 | FED. ROAD DIST. NO. ILLINOIS FED. AID PROJECT | | |

CONTRACT NO. 66375



STA. 178+00 MATCHLINE

STA. 184+00 MATCHLINE

MATCHLINE STA. 72+00 (OAK ST.)

| REVISIONS | |
|-----------|------|
| NAME | DATE |
| | |
| | |
| | |
| | |
| | |
| | |
| | |

ILLINOIS DEPARTMENT OF TRANSPORTATION
LANDSCAPING PLAN
 FAP 681 (IL RTE. 116)
 SECTION (115)RS-1
 LIVINGSTON COUNTY
 VILLAGE OF CULLOM

SCALE: AS SHOWN
 DATE: _____
 DRAWN BY: CAR
 CHECKED BY: TMM

McDonough-Whitlow, P.C.
 Consulting Engineers & Land Surveyors

138 East Wood Street
 Hillboro, IL 62049
 Phone: 217.532.9233
 Fax: 217.532.6300
 MW PROJ. # 03-062

1/8/2009 4:02:59 PM C:\3145\DRAWINGS\LANDSCAPING.dwg