

F.A.P. RTE.	SECTION	COUNTY	TOTAL SHEETS	SHEET NO.
840	.	IROQUOIS	14	1

•(135)RS-3 & (136)RS-2

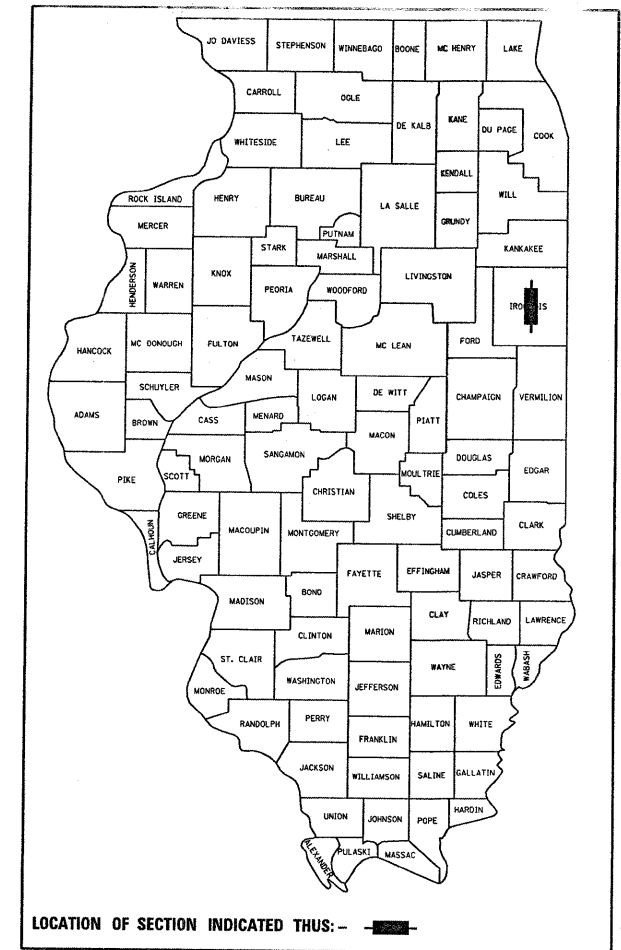
D-93-027-04

STATE OF ILLINOIS
DEPARTMENT OF TRANSPORTATION
DIVISION OF HIGHWAYS

**PROPOSED
HIGHWAY PLANS**

FAP 840 (IL 49)
(135)RS-3 & (136)RS-2
PROJECT ESP-0840(062)
IROQUOIS COUNTY
C-93-028-04

3P RESURFACING FROM SOUTH OF US 24
TO NORTH OF MILFORD ROAD



LOCATION OF SECTION INDICATED THUS: - [shaded box] -

RURAL MINOR ARTERIAL
ADT (2007) = 1850
P.V. = 80.2% M.U. = 4.9% S.U. = 14.9%

STATE OF ILLINOIS
DEPARTMENT OF TRANSPORTATION
DIVISION OF HIGHWAYS

SUBMITTED 213 2009

Morgan F. Rosen
DEPUTY DIRECTOR OF HIGHWAYS, REGION ENGINEER

March 13, 2009
Charles G. Ingersoll
ENGINEER OF DESIGN AND ENVIRONMENT

March 13, 2009
Christine M. Reed
DIRECTOR OF HIGHWAYS, CHIEF ENGINEER

PRINTED BY THE AUTHORITY
OF THE STATE OF ILLINOIS

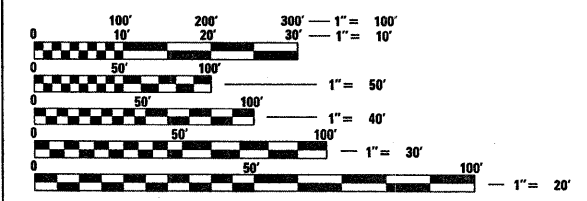
INDEX OF SHEETS

- 1 COVER SHEET
- 2 GENERAL NOTES
- 3 SUMMARY OF QUANTITIES
- 4 TYPICAL SECTIONS
- 5-6 SCHEDULES
- 7 PROJECT LAYOUT
- 8-10 TIE POINTS
- 11-14 DETAILS

STANDARDS

- 000001-05 STANDARD SYMBOLS, ABBREVIATIONS AND PATTERNS
- 001001-02 AREAS OF REINFORCEMENT BARS
- 001006 DECIMAL OF AN INCH AND OF A FOOT
- 280001-04 TEMPORARY EROSION CONTROL SYSTEMS
- 406201-01 MAILBOX TURNOUT
- 667101-01 PERMANENT SURVEY MARKERS
- 701006-03 OFF-ROAD OPERATIONS 2L, 2W, 4.5 m (15') TO 600 mm (24") FROM PAVEMENT EDGE
- 701011-02 OFF-ROAD MOVING OPERATIONS 2L, 2W, DAY ONLY
- 701301-03 LANE CLOSURE, 2L, 2W, SHORT TIME OPERATIONS
- 701306-02 LANE CLOSURE, 2L, 2W, SLOW MOVING OPERATIONS DAY ONLY, FOR SPEEDS GREATER THAN OR EQUAL TO 45 MPH
- 701311-03 LANE CLOSURE, 2L, 2W, MOVING OPERATIONS - DAY ONLY
- 701901-01 TRAFFIC CONTROL DEVICES
- 780001-02 TYPICAL PAVEMENT MARKINGS
- 781001-03 TYPICAL APPLICATIONS RAISED REFLECTIVE PAVEMENT MARKERS

MICROFILMED _____
REEL NUMBER _____
AWARDED _____
RESIDENT ENGINEER _____
AS BUILT CHANGES WERE MADE
ON THE FOLLOWING SHEETS _____



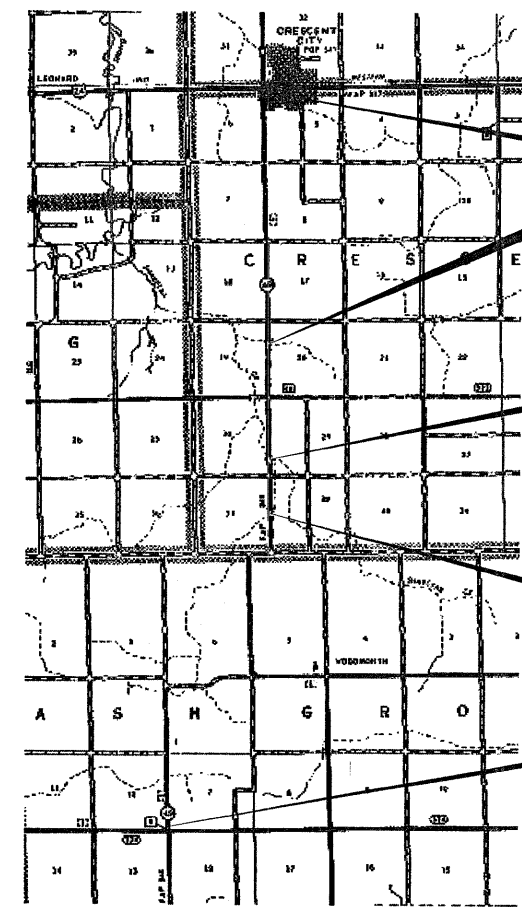
FULL SIZE PLANS HAVE BEEN PREPARED USING STANDARD ENGINEERING SCALES. REDUCED SIZED PLANS WILL NOT CONFORM TO STANDARD SCALES. IN MAKING MEASUREMENTS ON REDUCED PLANS, THE ABOVE SCALES MAY BE USED.

J.U.L.I.E.
JOINT UTILITY LOCATION INFORMATION FOR EXCAVATION
1-800-892-0123

DISTRICT 3 NO. (815) 434-6131

PROJECT ENGINEER: JOE KANNEL
UNIT CHIEF: MICHELE LINDEMANN
TOWNSHIPS: CRESCENT, ASH GROVE

CONTRACT NO. 66426



END IMPROVEMENT
STA. 870+51

SN 038-0191 STA. 695+73.5
OMISSION STA. 695+32.5 TO 696+14.5

SN 038-0093
OMISSION STA. 616+37 TO 617+30

SN 038-2014
STA. 581+00

BEGIN IMPROVEMENT
STA. 303+14

LOCATION MAP
NOT TO SCALE

GROSS LENGTH = 56,737 FT = 10.746 MI
NET LENGTH = 56,562 FT = 10.713 MI

DATE - TIME: 01\DW\WORK\PI\DOT\CARPENTERD\J\ms 7 3524\0366426-shr-ALLSHTS.DGN