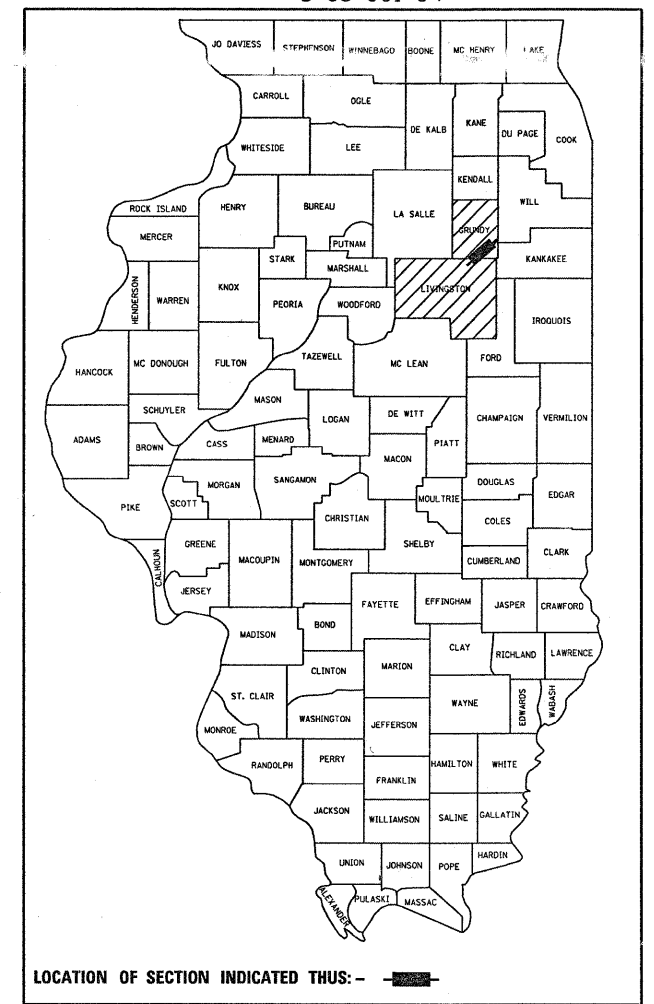


F.A.S. RTE.	SECTION	COUNTY	TOTAL SHEETS	SHEET NO.
298		ILLINOIS	7	1

CONTRACT NO. 66494
 • (7X-3,7R-2,6R-2)RS-1 & 92RS-2
 • LIVINGSTON & GRUNDY

D-93-081-04



MAJOR COLLECTOR (RURAL)
 ADT = 1200(2007) TRUCKS = 4.2%

STATE OF ILLINOIS
 DEPARTMENT OF TRANSPORTATION
 DIVISION OF HIGHWAYS

SUBMITTED _____ 20 _____

George Ryzman
 DEPUTY DIRECTOR OF HIGHWAYS, REGION ENGINEER

March 13, 20 09
Charles J. Ingersoll
 ENGINEER OF DESIGN AND ENVIRONMENT

March 13, 20 09
Christine M. Reed
 DIRECTOR OF HIGHWAYS, CHIEF ENGINEER

**PRINTED BY THE AUTHORITY
 OF THE STATE OF ILLINOIS**

STATE OF ILLINOIS

DEPARTMENT OF TRANSPORTATION

DIVISION OF HIGHWAYS

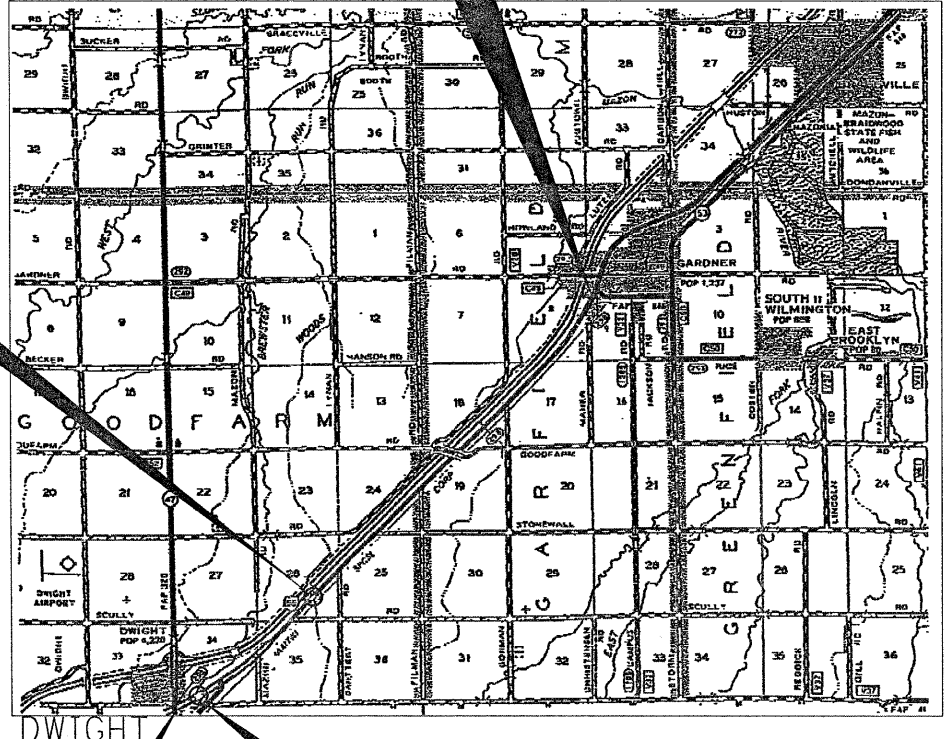
**PROPOSED
 HIGHWAY PLANS**

**FAS ROUTE 298 (OR 66)
 SECTION (7X-3,7R-2,6R-2)RS-1 & 92RS-2
 PROJECT ESP-0298(103)**

**3P RESURFACING
 IL 53 @ GARDNER TO IL 47 @ DWIGHT
 LIVINGSTON & GRUNDY COUNTIES**

C-93-138-04

**BEGIN IMPROVEMENT
 STA. 23+18**



**SN 032-2004
 STA. 277+65 TO STA. 278+05
 MILL & RESURFACE 1 1/2"**

**END IMPROVEMENT
 STA. 392+97**

**SN 032-2008
 STA. 378+52 TO STA. 379+52
 MILL & RESURFACE 1 1/2"**

GRUNDY CO-STA. 23+18 TO STA. 387+00
 LIVINGSTON CO- STA. 387+00 TO STA. 392+97

GROSS LENGTH & NET LENGTH = 36979 FT. = 7.00 MILE

INDEX OF SHEETS

- 1 COVER SHEET
- 2 REFERENCE MAP & GENERAL NOTES
- 3 SUMMARY OF QUANTITIES
- 4 TYPICAL SECTIONS
- 5 SCHEDULE OF QUANTITIES
- 6 - 7 DETAILS

STANDARDS

- 000001-05 STANDARD SYMBOLS, ABBREVIATIONS AND PATTERNS
- 406201-01 MAILBOX TURNOUT
- 442201-03 CLASS C AND D PATCHES
- 701001-02 OFF-ROAD OPERATIONS 2L, 2W, MORE THAN 15' (4.5 m) AWAY
- 701006-03 OFF-ROAD OPERATIONS 2L, 2W, 15' (4.5 m) TO 24" (600 mm) FROM PAVEMENT EDGE
- 701011-02 OFF-ROAD MOVING OPERATIONS 2L, 2W, DAY ONLY
- 701301-03 LANE CLOSURE, 2L, 2W, SHORT TIME OPERATIONS
- 701306-02 LANE CLOSURE, 2L, 2W, SLOW MOVING OPERATIONS DAY ONLY, FOR SPEEDS ≥ 45 MPH
- 701311-03 LANE CLOSURE, 2L, 2W, MOVING OPERATIONS - DAY ONLY
- 701326-03 LANE CLOSURE, 2L, 2W, PAVEMENT WIDENING, FOR SPEEDS ≥ 45 MPH
- 701336-05 LANE CLOSURE, 2L, 2W, WORK AREAS IN SERIES, FOR SPEEDS ≥ 45 MPH
- 701901-01 TRAFFIC CONTROL DEVICES
- 781001-03 TYPICAL APPLICATIONS RAISED REFLECTIVE PAVEMENT MARKERS

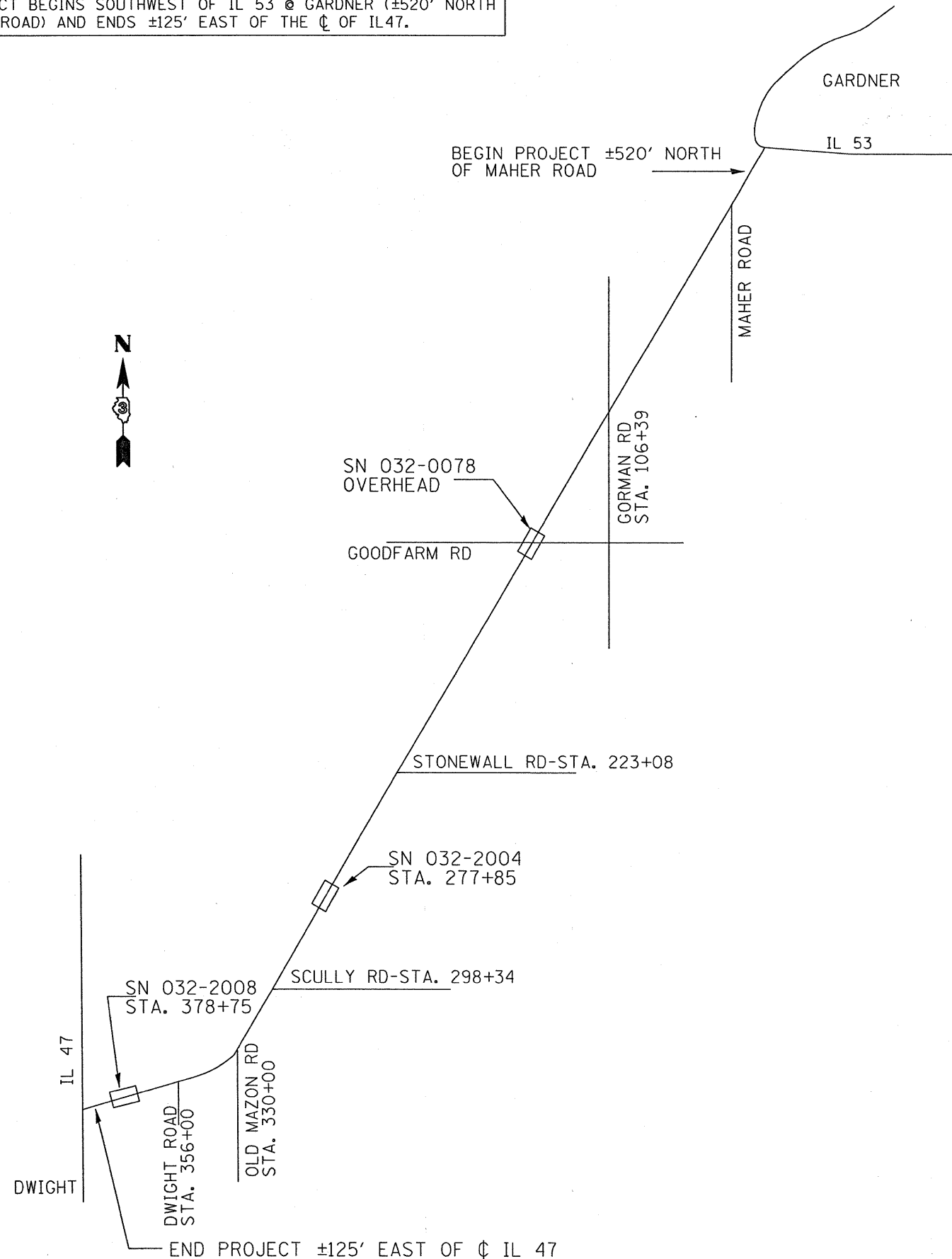
MICROFILMED
 REEL NUMBER
 AWARDED
 RESIDENT ENGINEER
 AS BUILT CHANGES WERE MADE
 ON THE FOLLOWING SHEETS

**J.U.L.I.E.
 JOINT UTILITY LOCATION INFORMATION FOR EXCAVATION
 1-800-892-0123
 OR 811**

**PROJECT ENGINEER: CRAIG REED
 UNIT CHIED: BRAD DUNCAN
 TOWNSHIPS: DWIGHT, GOODFARM, GARFIELD**

CONTRACT NO. 66494

THE PROJECT BEGINS SOUTHWEST OF IL 53 @ GARDNER (±520' NORTH OF MAHER ROAD) AND ENDS ±125' EAST OF THE C OF IL47.



GENERAL NOTES

THE THICKNESS OF HMA SHOWN ON THE PLANS IS THE NOMINAL THICKNESS. DEVIATIONS FROM THE NOMINAL THICKNESS WILL BE PERMITTED WHEN SUCH DEVIATIONS OCCUR DUE TO IRREGULARITIES IN THE EXISTING SURFACE OR BASE ON WHICH THE HMA IS PLACED.

THE HMA SURFACE OF ALL MAILBOX TURNOUTS, PRIVATE ENTRANCES, COMMERCIAL ENTRANCES, AND SIDE ROADS SHALL BE MADE NEATLY, IN A WORKMANLIKE MANNER, AND SHALL ACCURATELY CONFORM TO THE SHAPES AND DIMENSIONS SHOWN ON THE PLAN DETAILS. IF REQUIRED BY THE ENGINEER, THE CONTRACTOR SHALL BE REQUIRED TO SAW CUT THE HMA SURFACE TO CONFORM TO THE SHAPES AND DIMENSIONS SHOWN ON THE PLAN DETAILS. THIS WORK SHALL BE INCLUDED IN THE COST OF THE HMA SURFACE

THE ENGINEER WILL BE THE SOLE JUDGE CONCERNING CURING TIME FOR THE VARIOUS HMA LIFTS.

ON EXISTING PAVEMENT WHICH MAY BE SUPERELEVATED, THE NEW HMA PAVEMENT SHALL BE BUILT WITH THE SAME SUPERELEVATION UNLESS NEW SUPERELEVATION RATES ARE GIVEN ON THE PLANS.

THE FOLLOWING RATES OF APPLICATION HAVE BEEN USED IN CALCULATING PLAN QUANTITIES:

GRANULAR MATERIALS	2.05	TONS / CU YD
BITUMINOUS MAT PRIME COAT	0.08	GAL / SQ YD
FOR ADDITIONAL HMA LIFTS "FOG COAT"	0.05	GAL / SQ YD
AGGREGATE PRIME COAT	0.002	TONS / SQ YD
HMA RESURFACING	112	LBS / SQ YD / IN
SHORT TERM PAVEMENT MARKING	10	FT /100 FT OF APPLICATION
MIX FOR CRACKS, JTS & FLGWYS	0.0003	TONS / SQ YD
LEVEL BINDER (HAND METHOD)	0.0005	TONS / SQ YD

THE CONTRACTOR SHALL CONTACT JULIE AT LEAST 48 HOURS PRIOR TO EXCAVATION TO DETERMINE WHICH UTILITIES ARE IN THE AREA.

STATE OF ILLINOIS
DEPARTMENT OF TRANSPORTATION
DISTRICT THREE

PREPARED BY: Rustavel
DISTRICT STUDIES & PLANS ENGINEER

DATE: 1-30-09

EXAMINED BY: [Signature]
DISTRICT CONSTRUCTION ENGINEER

[Signature]
DISTRICT MATERIALS ENGINEER

[Signature]
DISTRICT OPERATIONS ENGINEER

FILE NAME =	USER NAME = duncanbd	DESIGNED -	REVISED -
es:\pw\work\PROJECTS\OUNCANBD\plans\84560\shh.ta.dgn		DRAWN -	REVISED -
		CHECKED -	REVISED -
		DATE -	REVISED -

STATE OF ILLINOIS
DEPARTMENT OF TRANSPORTATION

GENERAL NOTES & REFERENCE MAP

SCALE: SHEET NO. OF SHEETS STA. TO STA.

F.A.S. RTE.	SECTION	COUNTY	TOTAL SHEETS	SHEET NO.
298	*	**	7	2

• (7X-3,7R-2,6R-2)RS-1 & 92RS-2 CONTRACT NO. 66494
ILLINOIS FED. AID PROJECT

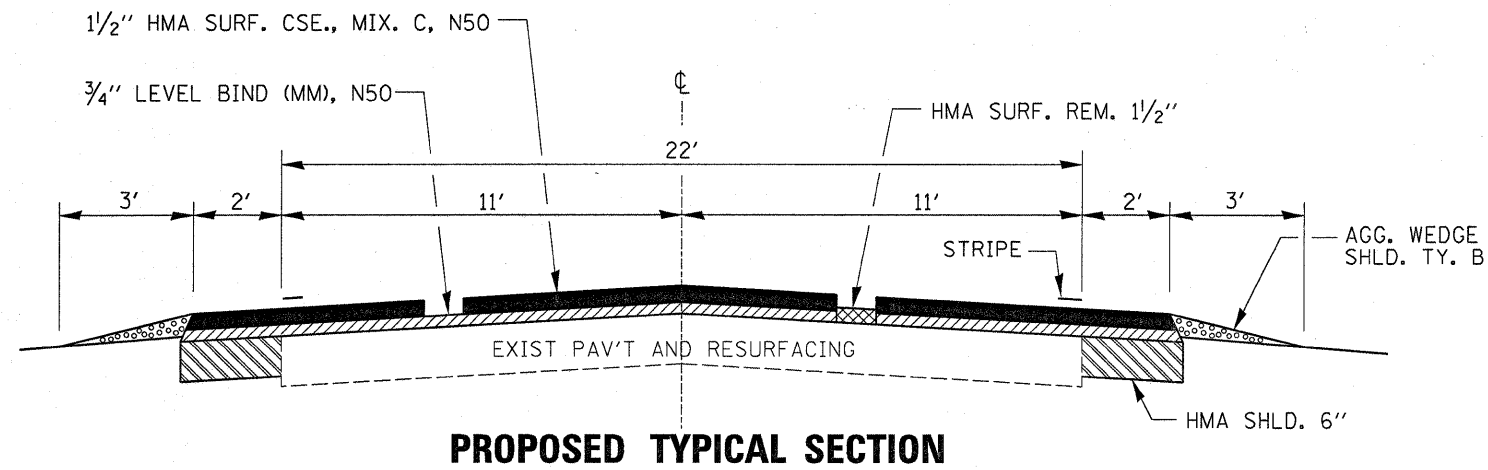
** LIVINGSTON & GRUNDY

SUMMARY OF QUANTITIES						GRUNDY
CODE NO.	ITEM	UNIT	TOTAL QUANTITY	I000		SFTY-2A
				GRUNDY CO	LIVINGSTON CO	032-2004 032-2008
20200600	EXCAVATING AND GRADING EXISTING SHOULDER	UNIT	737	725	12	
20400800	FURNISHED EXCAVATION	CU YD	15	15		
40600100	BITUMINOUS MATERIALS (PRIME COAT)	GALLON	15085	14796	245	44
40600300	AGGREGATE (PRIME COAT)	TON	234	229.1	3.8	1.1
40600400	MIXTURE FOR CRACKS, JOINTS, AND FLANGEWAYS	TON	29	28.5	0.5	
40600525	LEVELING BINDER (HAND METHOD), N50	TON	49	48.2	0.8	
40600625	LEVELING BINDER (MACHINE METHOD), N50	TON	4866	4793	73	
40600895	CONSTRUCTING TEST STRIP	EACH	1	1		
40600990	TEMPORARY RAMP	SQ YD	100	87	13	
40603310	HOT-MIX ASPHALT SURFACE COURSE, MIX "C", N50	TON	9602	9400	156	46
40800050	INCIDENTAL HOT-MIX ASPHALT SURFACING	TON	148	148		
44000155	HOT-MIX ASPHALT SURFACE REMOVAL, 1 1/2"	SQ YD	98510	96487	1472	551
44201803	CLASS D PATCHES, TYPE II, 13 INCH	SQ YD	448	448		
48102100	AGGREGATE WEDGE SHOULDER, TYPE B	TON	2100	2065	35	
48203021	HOT-MIX ASPHALT SHOULDERS, 6"	SQ YD	18012	17720	292	
67000400	ENGINEER'S FIELD OFFICE, TYPE A	CAL MO	3	3		
67100100	MOBILIZATION	L SUM	1	1		
70100460	TRAFFIC CONTROL AND PROTECTION, STANDARD 701306	L SUM	1	1		
70100500	TRAFFIC CONTROL AND PROTECTION, STANDARD 701326	L SUM	1	1		
70100600	TRAFFIC CONTROL AND PROTECTION, STANDARD 701336	L SUM	1	1		
70103815	TRAFFIC CONTROL SURVEILLANCE	CAL DA	4	3	1	
70300100	SHORT-TERM PAVEMENT MARKING	FOOT	7396	7276	120	
70300635	TEMPORARY PAINT PAVEMENT MARKING - LINE 6"	FOOT	9240	9090	150	
70301000	WORK ZONE PAVEMENT MARKING REMOVAL	SQ FT	1233	1193	40	
* 78001110	PAINT PAVEMENT MARKING - LINE 4"	FOOT	73958	72764	1194	
* 78001130	PAINT PAVEMENT MARKING - LINE 6"	FOOT	9240	9090	150	
* 78100100	RAISED REFLECTIVE PAVEMENT MARKER	EACH	462	454	8	

* SPECIALTY ITEMS

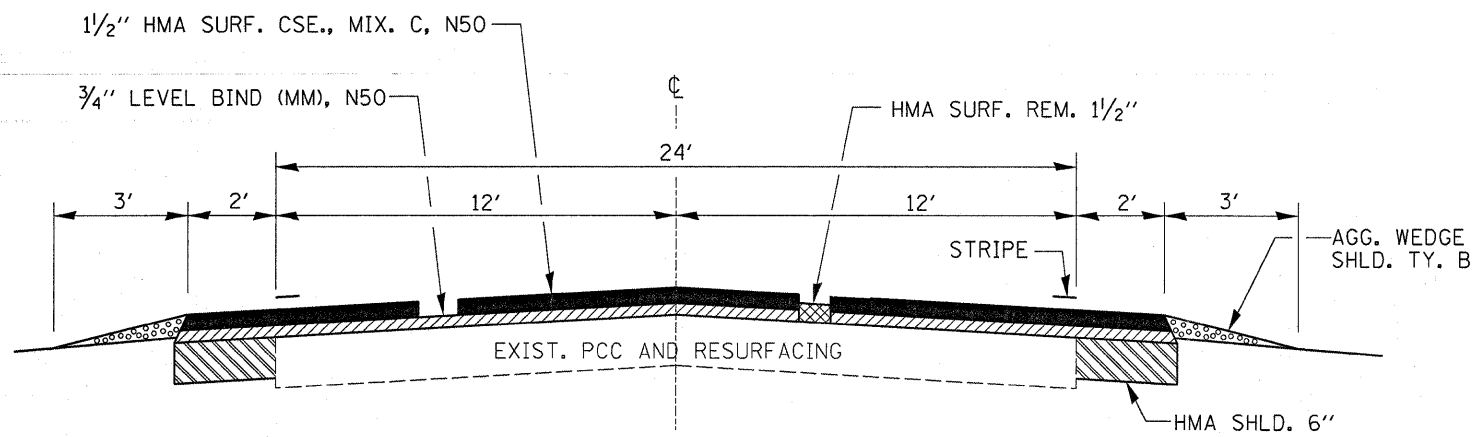
FILE NAME =	USER NAME = duncanbd	DESIGNED -	REVISED -	STATE OF ILLINOIS DEPARTMENT OF TRANSPORTATION	SUMMARY OF QUANTITIES	F.A.S. RTE.	SECTION	COUNTY	TOTAL SHEETS	SHEET NO.
es:\pwork\PIWIDOT\OUNCANBD\ams84568\val	sh.ta.dgn	DRAWN -	REVISED -			298	.	**	7	3
PLOT SCALE = 50.000' / IN.	CHECKED -	REVISED -				* (TX-3,7R-2,6R-2)RS-1 & 92RS-2		CONTRACT NO. 66494		
PLOT DATE = Jan 30, 2009 - 08:05:25 AM	DATE -	REVISED -				SCALE:	SHEET NO. OF SHEETS	STA. TO STA.	ILLINOIS FED. AID PROJECT	

** LIVINGSTON & GRUNDY



STA. 23+18 - STA. 64+38*

*NOTE: STATIONING IS APPROXIMATE. ENGINEER MAY ADJUST IN FIELD



STA. 64+38 - STA. 392+97

MIXTURES TABLE

	HMA SURFACE	LEVEL BINDER	HMA INCIDENTAL SURFACE	HMA BINDER FOR PATCHES	HMA SHOULDERS
PG GRADE	PG 64-22	PG 64-22	PG 64-22	PG 64-22	PG 64-22
MAX % RAP ALLOWABLE**	•15	•25	•15	•25	•50
DESIGN AIR VOIDS	4.0% @ N50	4.0% @ N50	4.0% @ N50	4.0% @ N50	2.0% @ N30
MIXTURE COMPOSITION	IL 12.5 OR IL 9.5	IL 9.5	IL 12.5 OR IL 9.5	IL 19.0	IL 19.0
FRICTION AGGREGATE	MIXTURE C		MIXTURE C		
DENSITY CONTROL	CORES	SATISFACTION OF ENGINEER	SATISFACTION OF ENGINEER	CORES	CORRELATION

- * SEE RAP SPECIAL PROVISION
- ** IF RAP OPTION IS SELECTED, THE ASPHALT CEMENT GRADE MAY NEED ADJUSTED. THIS WILL BE DETERMINED BY THE ENGINEER.

MAINLINE											
STATION TO STATION	MIX CRS	LEV BIND	BIT MAT	AGG (PR CT)	HMA SURF REM	EXC & GRAD EXIST SHLD	HMA SHLD 6"	LEV BIND (MM) N50	HMA SURF CSE "C", N50	AGG WEDGE SHLD TY B	TEMP RAMP
	JTS & FLWYS	(HM) N50	(PR CT)	(PR CT)	1 1/2"	SHLD	6"	(MM) N50	"C", N50	TY B	
	TON	TON	GAL	TON	SQ YD	UNIT	SQ YD	TON	TON	TON	SQ YD
GRUNDY											
23+18 - 23+48	0.02	0.04	11.4	0.2	73.0	0.6	15		7	2	12.2
23+48 - 64+38	3.00	5.00	1559.7	24.0	9998.0	81.8	2000	513	993	233	
64+38 - 277+65	17.06	28.44	8748.9	134.6	56872.0	426.5	10427	2878	5573	1215	
277+65 - 278+05	(SN 032-2004)		8.6	0.2	107.0				9		
278+05 - 378+25	8.04	13.40	4119.8	63.4	26720.0	200.4	4899	1355	2625	571	
378+25 - 379+25	(SN 032-2008)		35.5	0.9	444.0				37		
379+25 - 383+50	0.33	0.56	105.8	2.6	1133.0	8.5	208		110	24	
383+50 - 387+00	0.28	0.47	143.7	2.2	933.0	7.0	171	47	92	20	
LIVINGSTON											
387+00 - 392+07	0.41	0.68	208.0	3.2	1352.0	10.1	248	69	132	29	
392+07 - 392+97	0.07	0.12	36.9	0.6	120.0	1.8	44	4	24	6	13.3
TOTALS	29	49	14978	232	97752	737	18012	4866	9602	2100	26

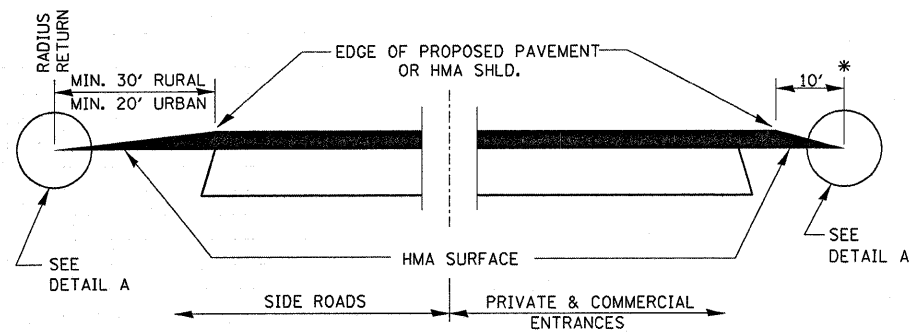
PATCHING	
LOCATION	CLASS D PATCH 13 INCH SQ YD
BEGIN JOB TO GORMAN RD(4000E)	14 @ 8
GORMAN RD(4000E) TO STONEWALL RD(10000S)	16 @ 8
STONEWALL RD(10000S) TO SN 032-2004	9 @ 8
SN 032-2004 TO SCULLY RD(11000S)	4 @ 8
SCULLY RD(11000S) TO OLD MAZON RD(1000E)	5 @ 8
OLD MAZON RD(1000E) TO SN 032-2004	8 @ 8
TOTALS	448

SIDEROADS AND ENTRANCES							
STATION	TYPE	SIDE	BIT MATLS	AGG PR	INC HMA SURF	TEMP RAMP	HMA SURF REMOVAL
			PR CT	CT	TON	SQ YD	1 1/2" SQ YD
			GALLON	TON	TON	SQ YD	SQ YD
MAHER RD	SR	LT	10	0.3	11	11.1	129
DIBBLE TRUCK	CE	RT	11		11		130
DIBBLE TRUCK	CE	RT	11		11		130
IDOT	CE	LT	4		4		45
IDOT	CE	LT	4		4		45
106+39 (4000E)	SR	LT	10	0.3	16	11.1	45
106+39 (4000E)	SR	RT	11	0.3	17	11.1	45
162+65	PE	LT	2		4		3
181+79	PE	LT	2		4		3
223+08 (10000S)	SR	LT	10	0.3	16	9.1	45
298+34 (11000S)	SR	LT	10	0.3	16	11.1	45
306+56	PE	RT	2		4		3
330+00 (1000E)	SR	LT	10	0.3	16	9.1	45
356+00 (DWIGHT RD)	SR	LT	10	0.2	15	11.1	45
TOTALS			107	1.8	148	74	758

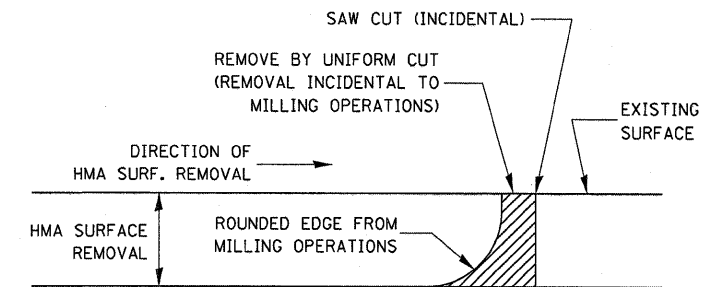
PAVEMENT MARKING			
LOCATION	PAINT PAVT MK LINE 4"	PAINT PAVT MK LINE 6"	RAISED REFL PVT MARK
	WHITE	YELLOW	
STA. TO STA.	FOOT	FOOT	EACH
GRUNDY			
23+18 - 387+00			
CENTERLINE		9090	454
EDGELINES	72764		
LIVINGSTON			
387+00 - 392+97			
CENTERLINE		150	8
EDGELINES	1194		
TOTALS	73958	9240	462

FILE NAME =	USER NAME = duncanbd	DESIGNED -	REVISED -	STATE OF ILLINOIS DEPARTMENT OF TRANSPORTATION	SCHEDULE OF QUANTITIES	F.A.S. RTE.	SECTION	COUNTY	TOTAL SHEETS	SHEET NO.
os:\pwwork\p\IDOT\DUNCANBD\dms84568\alshfts.dgn	DRAWN -	REVISED -	298			*	**	7	5	
PLOT SCALE = 50.000' / IN.	CHECKED -	REVISED -	* (7X-3,7R-2,6R-2)RS-1 & 92RS-2							
PLOT DATE = Jan 30, 2009 - 08:23:22 AM	DATE -	REVISED -	CONTRACT NO. 66494							
					SCALE:	ILLINOIS FED. AID PROJECT				

** LIVINGSTON & GRUNDY

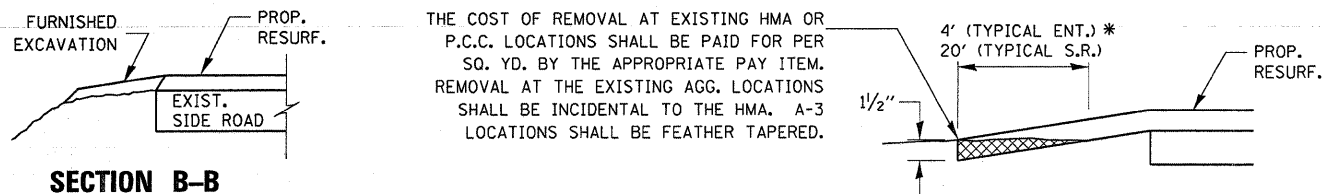


SECTION A-A
DETAILS AT ENTRANCES & SIDE ROADS



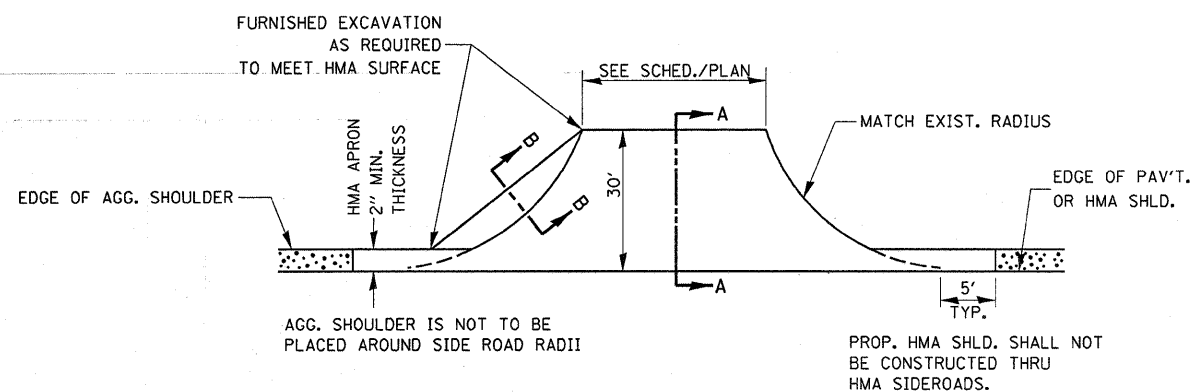
NOTE:
WHEN MILLING OPERATIONS PRODUCE A ROUNDED EDGE, THEN A SAW CUT SHALL BE USED TO MANUFACTURE A PERPENDICULAR EDGE AS SHOWN IN THE DETAIL. THE ENGINEER SHALL BE THE SOLE JUDGE CONCERNING THE USE OF THIS DETAIL

HMA DETAIL AT BUTT JOINTS

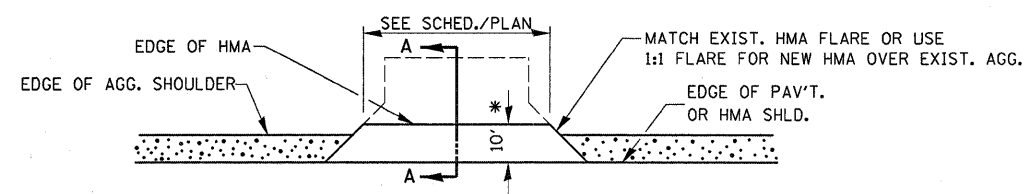


SECTION B-B

DETAIL A



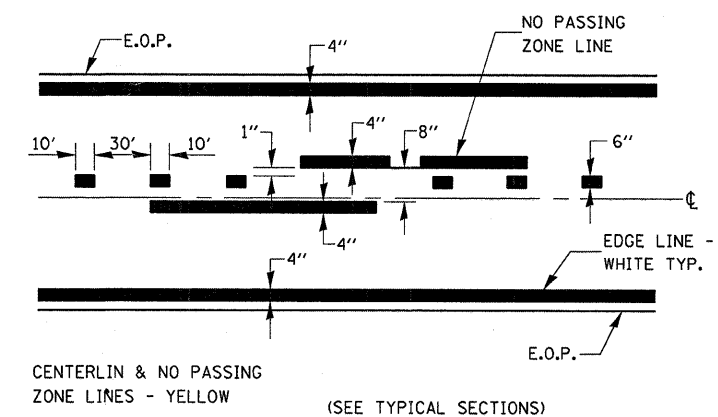
PLAN AT SIDE ROADS



PLAN AT PRIVATE & COMMERCIAL ENTRANCES

(DO NOT RESURFACE FIELD ENTRANCES)

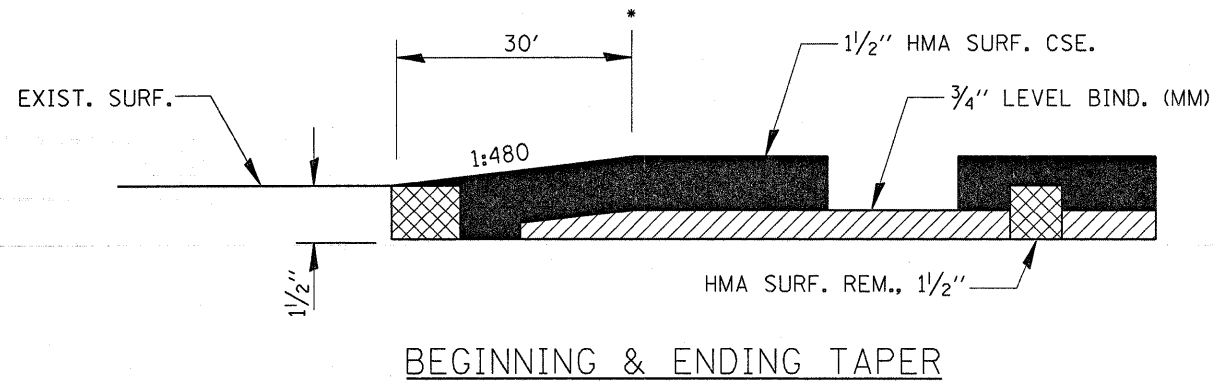
* PROPOSED HMA RESURFACING AT PUBLIC EDUCATIONAL FACILITY ENTRANCES SHALL BE EXTENDED TO THE RIGHT-OF-WAY LIMITS.



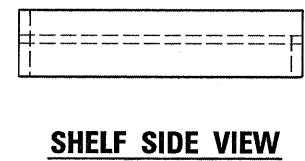
PAVEMENT MARKING

FILE NAME =	USER NAME = duncanbd	DESIGNED -	REVISED -	STATE OF ILLINOIS DEPARTMENT OF TRANSPORTATION	DETAILS				F.A.S. RTE.	SECTION	COUNTY	TOTAL SHEETS	SHEET NO.
os:\pwork\p\WIDOT\DUNCANBD\dms04560\alshits.dgn		DRAWN -	REVISED -		SCALE:	SHEET NO.	OF	SHEETS	STA.	TO STA.	298	7	6
		CHECKED -	REVISED -										
		DATE -	REVISED -										
	PLOT SCALE = 50,000' / IN.												
	PLOT DATE = Jan 30, 2009 - 08:23:29 AM												
										* (7X-3,7R-2,6R-2)RS-1 & 92RS-2		CONTRACT NO. 66494	
										ILLINOIS FED. AID PROJECT			

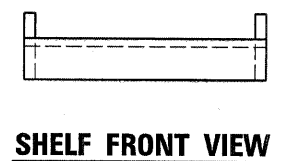
•• LIVINGSTON & GRUNDY



BEGINNING & ENDING TAPER

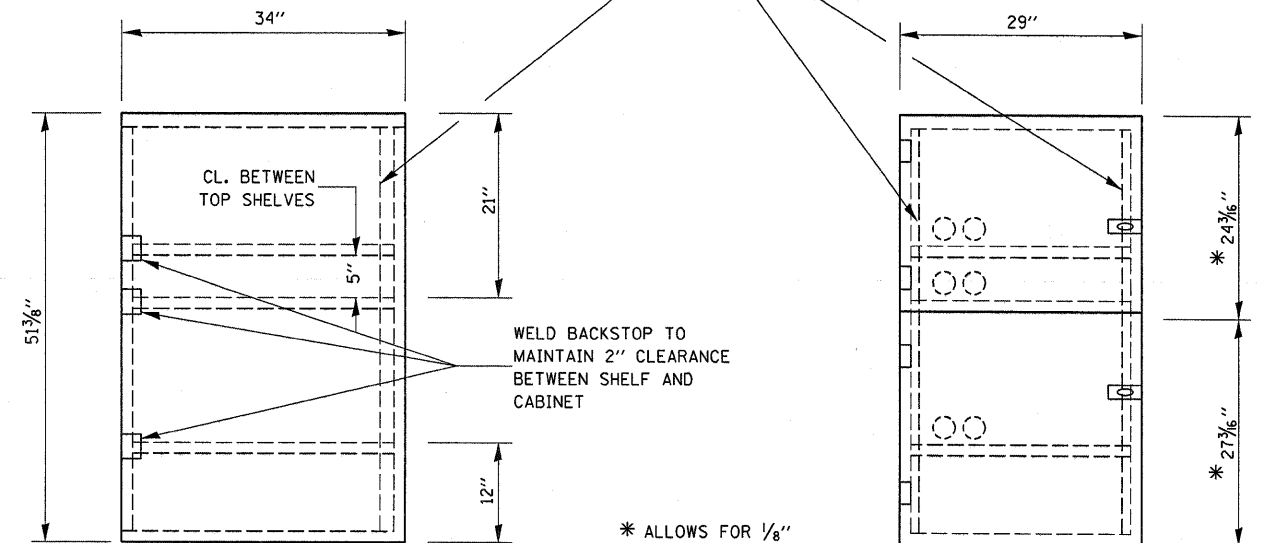


SHELF SIDE VIEW



SHELF FRONT VIEW

1/2" X 1/2" FLAT STOCK WELD TO FORM DOOR FRAME AND ALSO AROUND PERIMETER OF EACH DOOR.

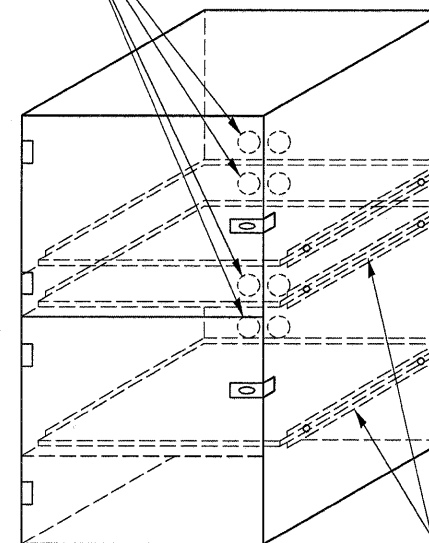


SIDE VIEW

FRONT VIEW

* ALLOWS FOR 1/8" CLEARANCE AT TOP AND BOTTOM OF CABINET AND BETWEEN DOORS.

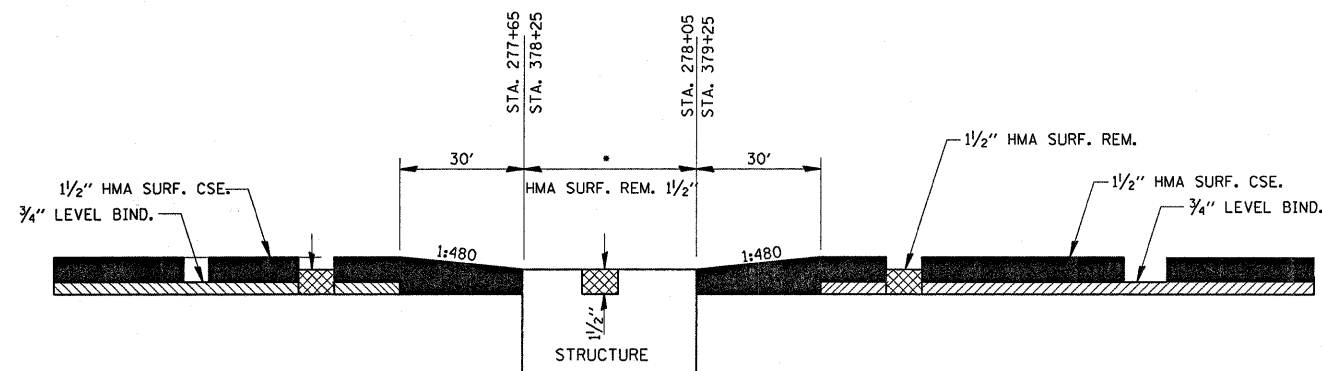
2" ACCESS HOLES IN REAR OF CABINET



FLAT STOCK DIMENSIONS VARY DEPENDING ON TYPE OF ROLLER ASSEMBLY

NOTES:

1. USE 16 GAUGE STEEL FOR CABINET.
2. THE TOP SHELF SHALL SLIDE IN OR OUT WITH THE TOP DOOR OPEN.
3. ALL HINGES AND HASPS WILL BE WELDED TO THE CABINET.
4. ALL EDGES SHALL BE GROUND SMOOTH.
5. TWO (2" DIA.) ACCESS HOLES WILL BE REQUIRED FOR EACH SHELF.
6. CABINET SHALL BE PAINTED WITH TWO COATS OF FLAT PAINT.
7. 2 EACH MATCHING KEY PADLOCKS, WITH 3 KEYS PROVIDED, MASTER MODEL 3 T OR EQUIVALENT.
8. 4 EACH PLAIN STEEL, NON-REMOVABLE PIN, NO HOLE 4" X 4" SQUARE CORNER HINGES TO BE WELDED ON.
9. 2 EACH EXTRA HEAVY, PLAIN STEEL, FIXED STAPLE, NO HOLE, 7/4" HASPS TO BE WELDED ON.



*SN 032-2004 (WOOD'S RUN) - 40'
SN 032-2008 - 100'

LOCKABLE COMPUTER CABINET

FILE NAME =	USER NAME = duncanbd	DESIGNED -	REVISED -
os:\pw\work\PIWIDOT\DUNCANBD\dms84568\el\shs.dgn		DRAWN -	REVISED -
		CHECKED -	REVISED -
		DATE -	REVISED -

STATE OF ILLINOIS
DEPARTMENT OF TRANSPORTATION

DETAILS				
SCALE:	SHEET NO.	OF SHEETS	STA.	TO STA.

F.A.S. RTE.	SECTION	COUNTY	TOTAL SHEETS	SHEET NO.
298	.	**	7	7
* (7X-3,7R-2,6R-2)RS-1 & 92RS-2			CONTRACT NO. 66494	
ILLINOIS FED. AID PROJECT				

** LIVINGSTON & GRUNDY