

PROJECT ENGR.: M. Addis 671-3454  
 DESIGNER: Elias Eiderzi 671-3459

CONTRACT NO. 68516

F.A.P. RTE.	SECTION	COUNTY	TOTAL SHEETS	SHEET NO.
22	*	FULTON	71	1

\* 133RS-3;134RS-2;135RS-5

FOR INDEX OF SHEETS, SEE SHEET #2

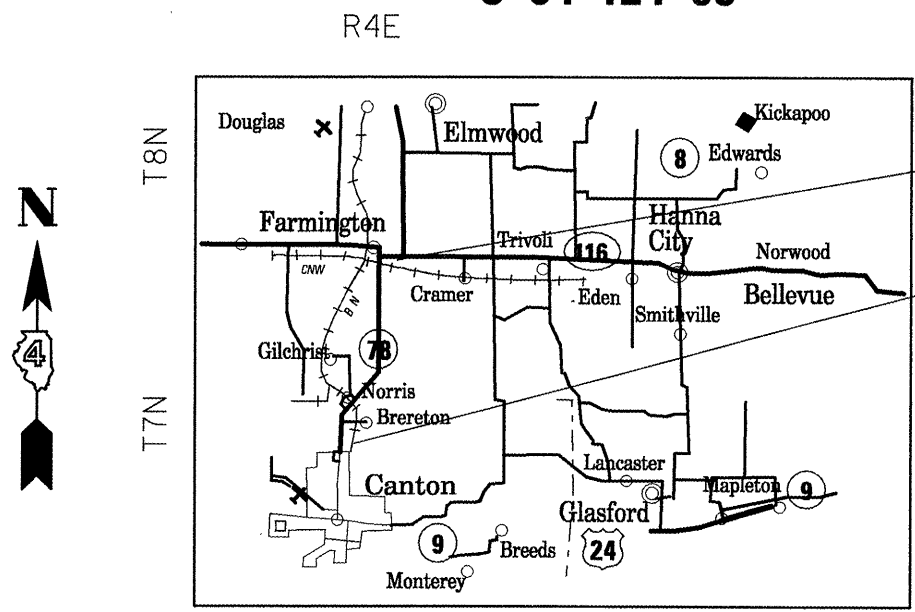
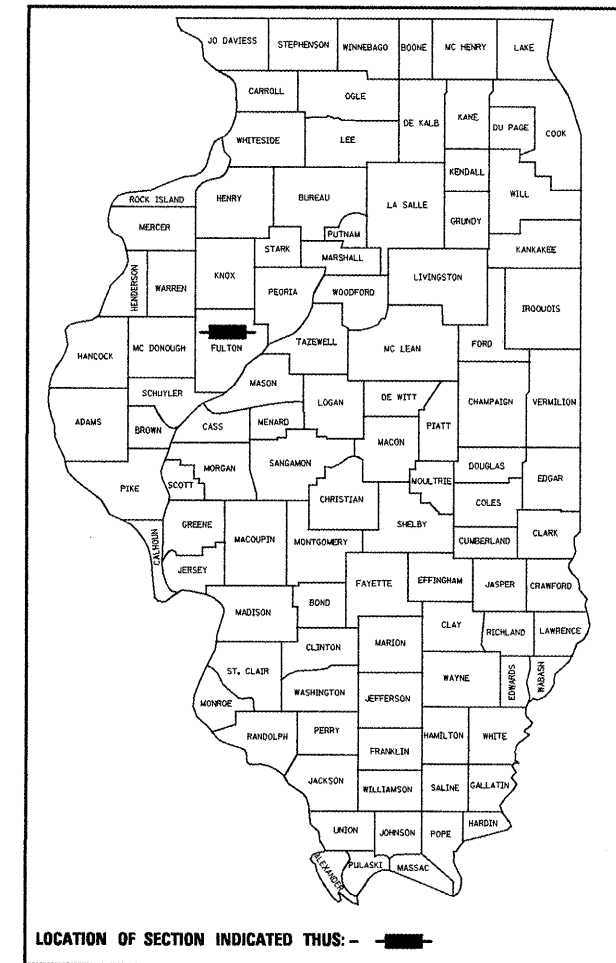
**STATE OF ILLINOIS**  
**DEPARTMENT OF TRANSPORTATION**  
**DIVISION OF HIGHWAYS**  
**PROPOSED**  
**HIGHWAY PLANS**

**FAP ROUTE 22 (IL 78)**  
**SECTION 133RS-3;134RS-2;135RS-5**  
**PROJECT ESP-0022(070)**  
**FULTON COUNTY**  
**C-94-124-05**

**HIGHWAY STANDARDS**

280001-04	701011-02	701326-03
442201-03	701501-05	
542401-01	701301-03	
630001-08	701306-02	
630101-08	701311-03	
630301-05	701336-05	
635006-03	701901-01	
667101-01	780001-02	
701001-02	781001-03	
701006-03	BLR23-1	

**D-94-097-05**



IMPROVEMENT BEGINS  
STA. 27+09

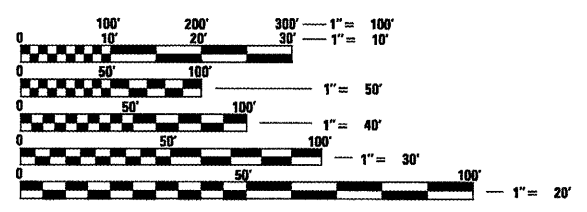
IMPROVEMENT ENDS  
STA. 160+25

Station Equations: 174+00(BK) = 175+00(AH)  
 262+19(BK) = 262+98(AH)  
 351+60(BK) = 102+24(AH)

ADT = 5,500 (2007)  
 MU = 100  
 SU = 150

**PROJECT DESCRIPTION**

This project consists of cold milling and resurfacing, including new safety shoulders, from IL 116(W) in Farmington to the NCL of Canton.



FULL SIZE PLANS HAVE BEEN PREPARED USING STANDARD ENGINEERING SCALES. REDUCED SIZED PLANS WILL NOT CONFORM TO STANDARD SCALES. IN MAKING MEASUREMENTS ON REDUCED PLANS, THE ABOVE SCALES MAY BE USED.

J.U.L.I.E.  
 JOINT UTILITY LOCATION INFORMATION FOR EXCAVATION  
 1-800-892-0123

STATE OF ILLINOIS  
 DEPARTMENT OF TRANSPORTATION  
 DIVISION OF HIGHWAYS

SUBMITTED Feb 6, 2009

DEPUTY DIRECTOR OF HIGHWAYS, REGION ENGINEER  
 March 13, 2009  
  
 ENGINEER OF DESIGN AND ENVIRONMENT  
 March 13, 2009  
 DIRECTOR OF HIGHWAYS, CHIEF ENGINEER

CONTRACT NO. 68516 CATALOG NO. 033112-00

GROSS LENGTH = 7.21 MILES  
 NET LENGTH = 7.21 MILES

**PRINTED BY THE AUTHORITY  
 OF THE STATE OF ILLINOIS**