

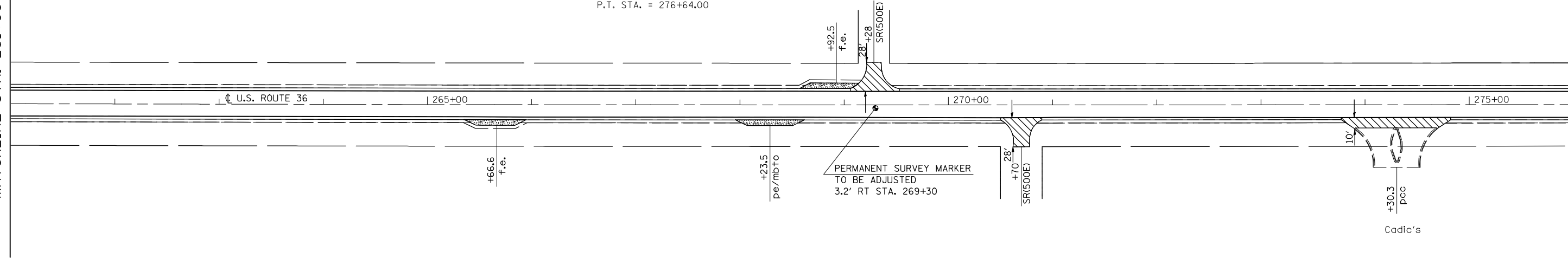
SEC. 35, T. 16 N., R. 7 E., 3RD P.M.  
DOUGLAS COUNTY



EXIST. CURVE 32  
PI STA. = 266+64.01  
 $\Delta = 0^\circ 17' 32''$  (LT)  
D =  $0^\circ 00' 53''$   
R = 392,078.35'  
T = 1,000.00'  
L = 2,000.00'  
E = 1.28'  
P.C. STA. = 256+64.01  
P.T. STA. = 276+64.00

MATCHLINE STA. 261+00

MATCHLINE STA. 276+00



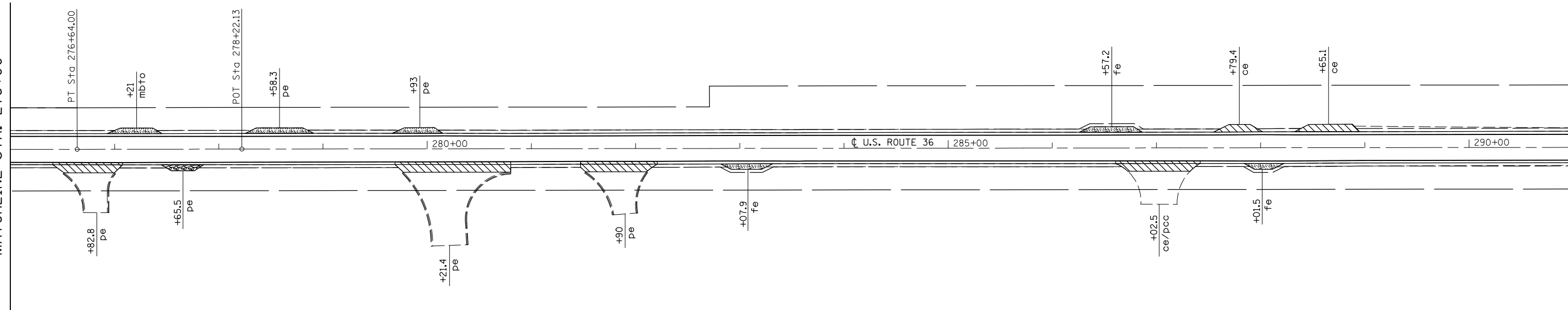
- PCC SURF. REM., SPECIAL
- HMA BUTT JOINT
- INCIDENTAL BIT SURF.
- HMA SURF. REM., SPECIAL

SEC. 35, T. 16 N., R. 7 E., 3RD P.M.  
DOUGLAS COUNTY



MATCHLINE STA. 276+00

MATCHLINE STA. 291+00



SEC. 1, T. 15 N., R. 7 E., 3RD P.M.  
DOUGLAS COUNTY

• (143-R,144)RS-4      \*\* DOUGLAS & PIATT

FILE NAME = c:\p\work\p\WIDOT\AUSTINRL\dms86981\70256plansheets.dgn	USER NAME = austinr1	DESIGNED -	REVISED -
		DRAWN -	REVISED -
	PLOT SCALE = 100.0000' / IN.	CHECKED -	REVISED -
	PLOT DATE = 1/23/2009	DATE -	REVISED -

**STATE OF ILLINOIS  
DEPARTMENT OF TRANSPORTATION**

**U.S. 36 PLAN SHEETS**

SCALE: 50      SHEET NO.      OF      SHEETS      STA. 261+00      TO STA. 291+00

F.A.P. RTE.	SECTION	COUNTY	TOTAL SHEETS	SHEET NO.
323	*	**	56	30
FED. ROAD DIST. NO.      ILLINOIS FED. AID PROJECT			CONTRACT NO. 70256	