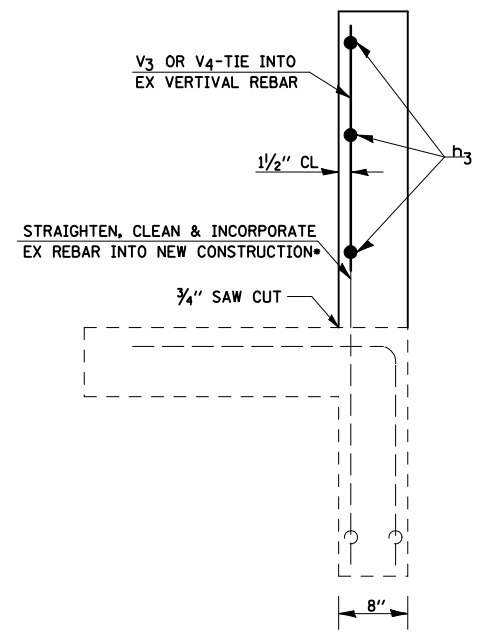
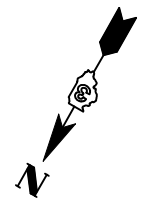
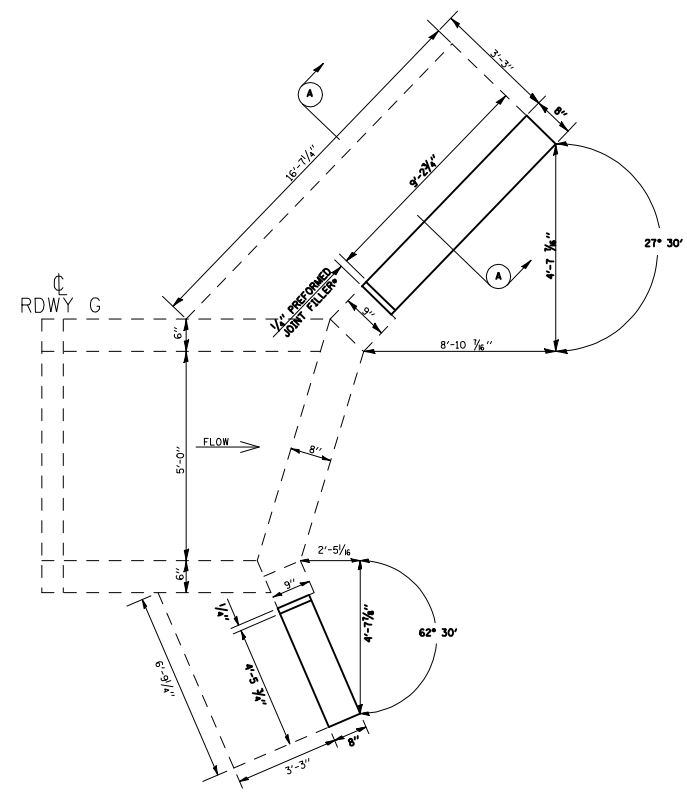


**HALF ELEVATION**

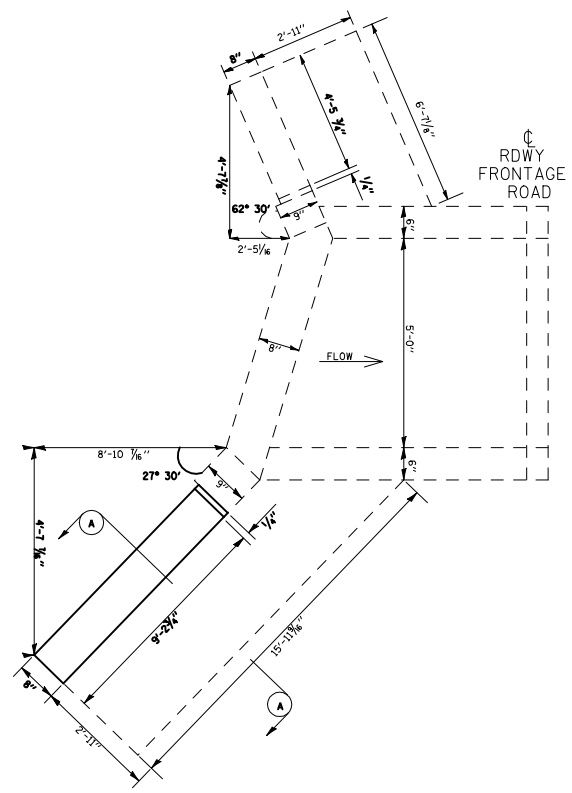


**SECTION A-A**

BILL OF MATERIAL			
BAR	NO	SIZE	LENGTH
h2	4	No. 4	4'-3"
h3	8	No. 4	9'-0"
V3	12	No. 4	2'-9"
V4	13	No. 4	4'-3"
CONCRETE REMOVAL			2.2 cu yd
CONCRETE STRUCTURE			2.2 cu yd
REINFORCEMENT REBARS			118 lbs



**PLAN VIEW**



WORK TO INCLUDE REPAIR TO BOTH EAST WINDWALLS FOR BOX CULVERT UNDER RDWY G AND FOR LONG WINGWALL (WEST END) UNDER FRONTAGE ROAD

\*COST INCLUD. IN CONC STRUCTURES