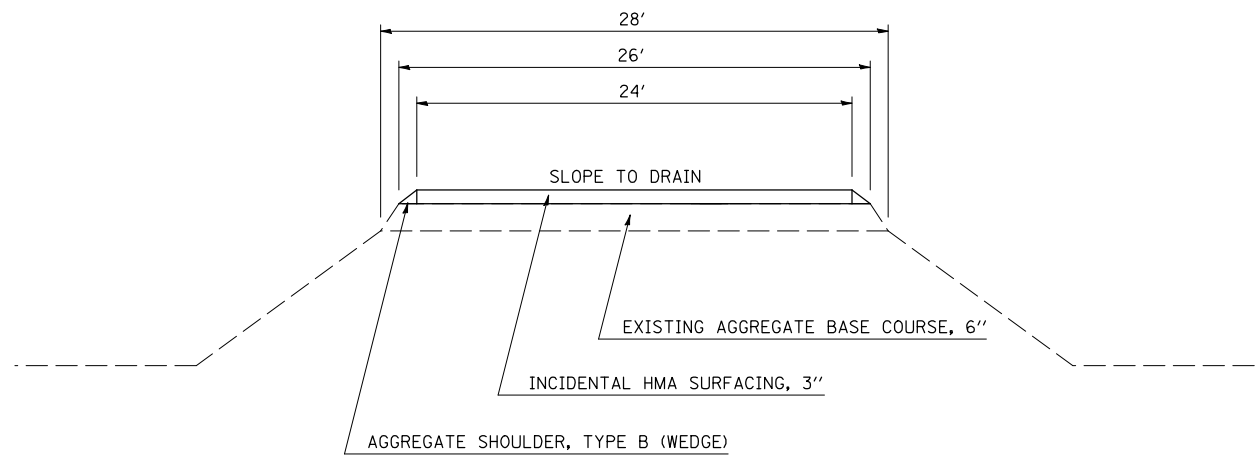


F.A.I. RTE.	SECTION	COUNTY	TOTAL SHEETS	SHEET NO.
74	(74,10-4,1)RS-1	•	69	35

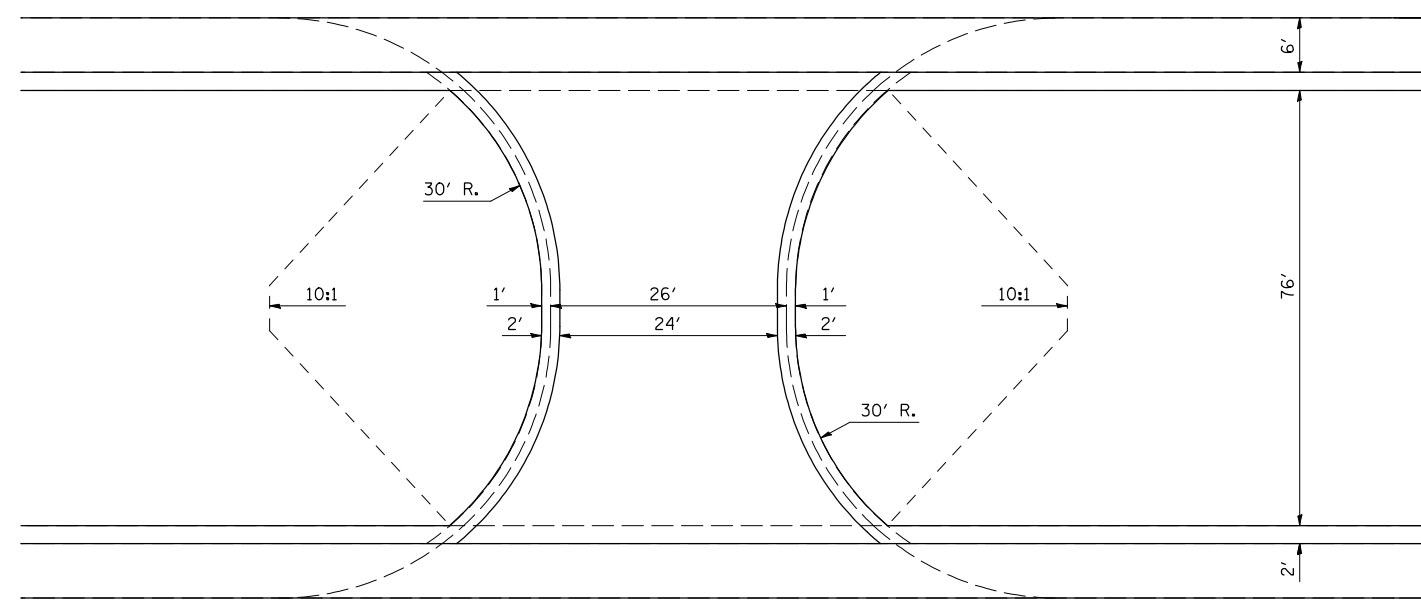
• PIATT & CHAMPAIGN

# DETAIL FOR MEDIAN CROSSOVER TO BE RECONSTRUCTED

STATION 1338+32.00  
STATION 1455+00.00



ELEVATION



PLAN

NOT TO SCALE

ILLINOIS DEPARTMENT OF TRANSPORTATION  
**DETAIL FOR MEDIAN CROSSOVER  
 TO BE RESURFACED**  
 F.A.I. ROUTE 74  
 SECTION (74,10-4,1)RS-1  
 PIATT & CHAMPAIGN COUNTIES

SCALE: NONE DRAWN BY: CADD  
 DATE: 01-03-07 CHECKED BY:

PLOT DATE = 2/5/2009  
 FILE NAME = c:\p\... \SHERER\JM\dms8888\76527DETAILS.DGN  
 PLOT SCALE = 4.23529' / IN.  
 USER NAME = sherer\_jm