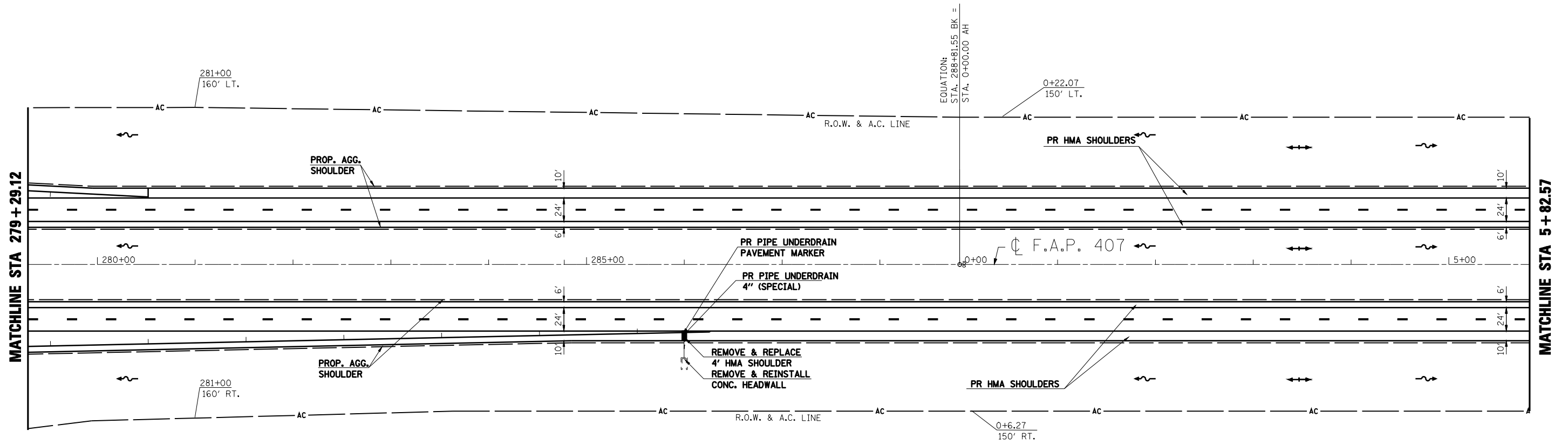


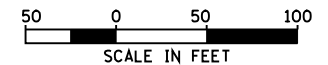
F.A.I. RTE.	SECTION	COUNTY	TOTAL SHEETS	SHEET NO.
172	•	ADAMS	108	54

STA. 279+29.12 TO STA. 5+82.57
 FED. ROAD DIST. NO. 6 ILLINOIS FED. AID PROJECT

* (1-5)RS-1; (1-6)RS
 CONTRACT NO. 72694



- ◆ INLET & PIPE PROTECTION
- ▨ HMA SURFACE REMOVAL - BUTT JOINT
- ▩ PCC SURFACE REMOVAL - BUTT JOINT
- ▧ HEAVY DUTY EXCELISIOR BLANKET
- ⚡ TEMPORARY DITCH CHECK (AGG. EROS. CONTROL)
- ~ DITCH FLOW LINE



REVISIONS	
NAME	DATE

ILLINOIS DEPARTMENT OF TRANSPORTATION
PLAN SHEET
STA. 279+29.12 TO STA. 5+82.57
STATION EQUATION
 F.A.I. 172
 ADAMS COUNTY

SCALE: VERT. _____
 HORIZ. _____
 DATE 08/09/04

DRAWN BY JJS
 CHECKED BY LLQ