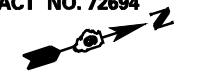


F.A.I. RTE.	SECTION	COUNTY	TOTAL SHEETS	SHEET NO.
172	•	ADAMS	108	61

STA. 98+02.43 TO STA. 113+38.56  
 FED. ROAD DIST. NO. 6 ILLINOIS FED. AID PROJECT

\* (1-5)RS-1; (1-6)RS  
 CONTRACT NO. 72694

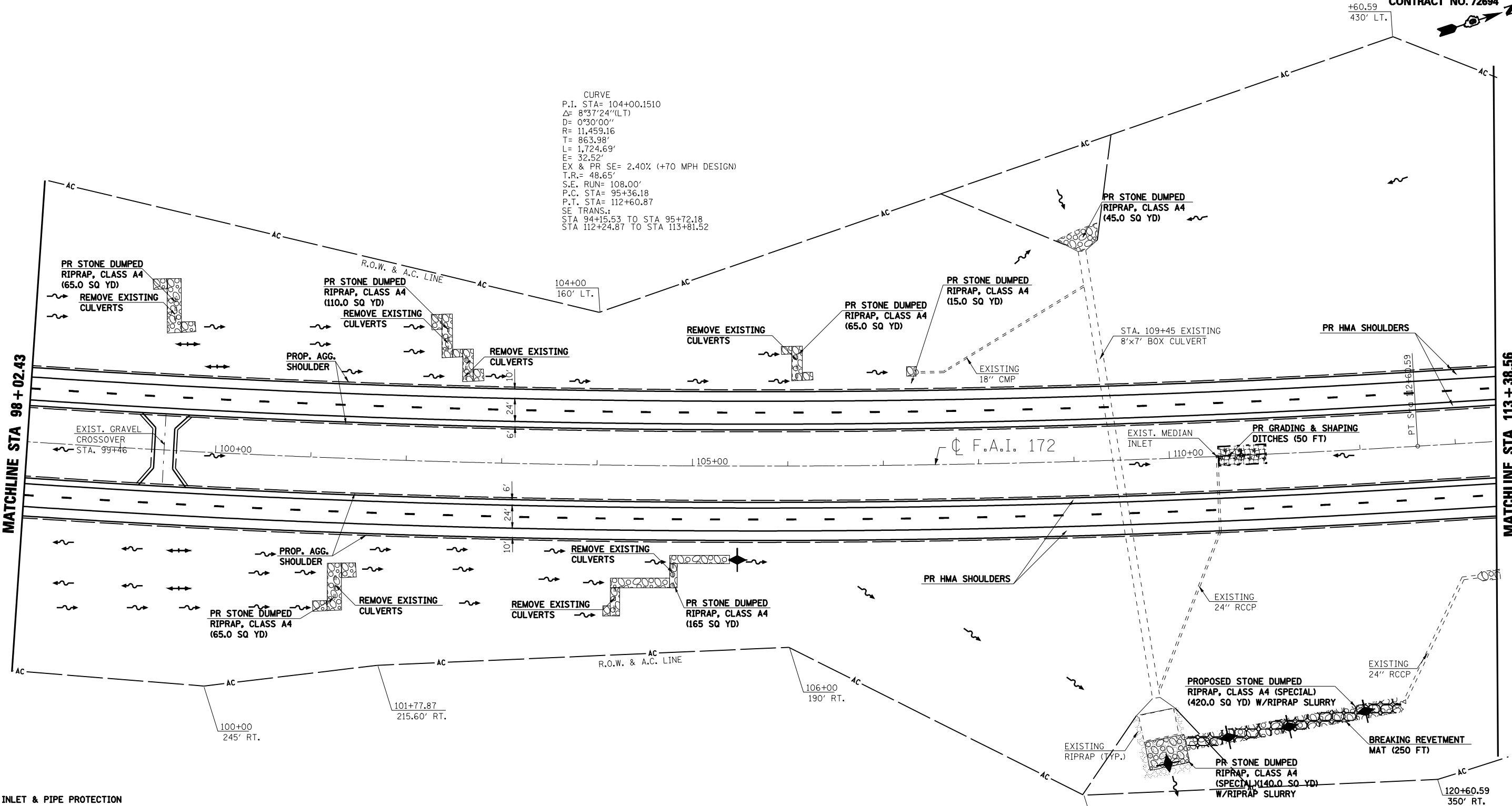
+60.59  
 430' LT.









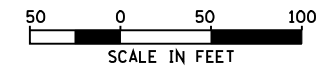
CURVE  
 P.I. STA= 104+00.1510  
 $\Delta = 8^{\circ}37'24''$  (LT)  
 $D = 0^{\circ}30'00''$   
 $R = 11,459.16$   
 $T = 863.98'$   
 $L = 1,724.69'$   
 $E = 32.52'$   
 $EX \ \& \ PR \ SE = 2.40\%$  (+70 MPH DESIGN)  
 $T.R. = 48.65'$   
 $S.E. \ RUN = 108.00'$   
 $P.C. \ STA = 95+36.18$   
 $P.T. \ STA = 112+60.87$   
 $SE \ TRANS.: \ STA \ 94+15.53 \ TO \ STA \ 95+72.18$   
 $STA \ 112+24.87 \ TO \ STA \ 113+81.52$

MATCHLINE STA 98 + 02.43

MATCHLINE STA 113 + 38.56



-  INLET & PIPE PROTECTION
-  BITUMINOUS SURFACE REMOVAL - BUTT JOINT
-  PCC SURFACE REMOVAL - BUTT JOINT
-  HEAVY DUTY EXCELSIOR BLANKET
-  TEMPORARY DITCH CHECK (AGG. EROS. CONTROL)
-  DITCH FLOW LINE



REVISIONS	
NAME	DATE

ILLINOIS DEPARTMENT OF TRANSPORTATION  
**PLAN SHEET**  
**STA. 98+02.43 TO STA. 113+38.56**  
 F.A.I. 172  
 ADAMS COUNTY

SCALE: VERT. \_\_\_\_\_  
 HORIZ. \_\_\_\_\_  
 DATE: 08/09/04  
 DRAWN BY: JJS  
 CHECKED BY: LLQ