

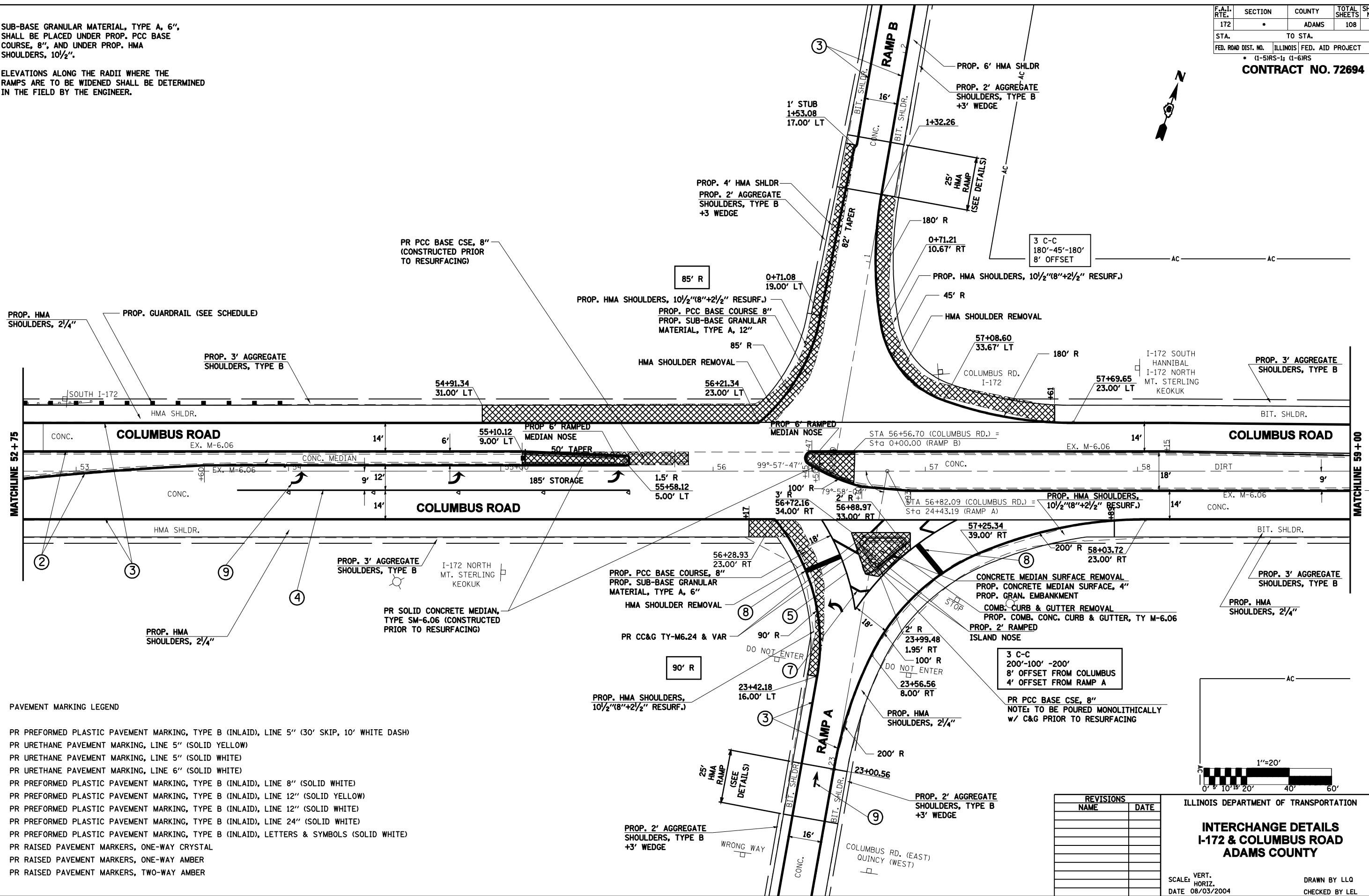
F.A.I. RTE.	SECTION	COUNTY	TOTAL SHEETS	SHEET NO.
172		ADAMS	108	81
STA.		TO STA.		
FED. ROAD DIST. NO.		ILLINOIS FED. AID PROJECT		
		• (1-5)RS-1; (1-6)RS		

CONTRACT NO. 72694



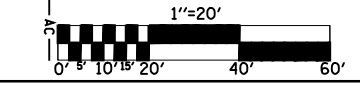
NOTE: SUB-BASE GRANULAR MATERIAL, TYPE A, 6", SHALL BE PLACED UNDER PROP. PCC BASE COURSE, 8", AND UNDER PROP. HMA SHOULDERS, 10 1/2".

ELEVATIONS ALONG THE RADII WHERE THE RAMPS ARE TO BE WIDENED SHALL BE DETERMINED IN THE FIELD BY THE ENGINEER.



- PAVEMENT MARKING LEGEND
- ① PR PREFORMED PLASTIC PAVEMENT MARKING, TYPE B (INLAID), LINE 5" (30' SKIP, 10' WHITE DASH)
 - ② PR URETHANE PAVEMENT MARKING, LINE 5" (SOLID YELLOW)
 - ③ PR URETHANE PAVEMENT MARKING, LINE 5" (SOLID WHITE)
 - ④ PR URETHANE PAVEMENT MARKING, LINE 6" (SOLID WHITE)
 - ⑤ PR PREFORMED PLASTIC PAVEMENT MARKING, TYPE B (INLAID), LINE 8" (SOLID WHITE)
 - ⑥ PR PREFORMED PLASTIC PAVEMENT MARKING, TYPE B (INLAID), LINE 12" (SOLID YELLOW)
 - ⑦ PR PREFORMED PLASTIC PAVEMENT MARKING, TYPE B (INLAID), LINE 12" (SOLID WHITE)
 - ⑧ PR PREFORMED PLASTIC PAVEMENT MARKING, TYPE B (INLAID), LINE 24" (SOLID WHITE)
 - ⑨ PR PREFORMED PLASTIC PAVEMENT MARKING, TYPE B (INLAID), LETTERS & SYMBOLS (SOLID WHITE)
 - ▲ PR RAISED PAVEMENT MARKERS, ONE-WAY CRYSTAL
 - ▲ PR RAISED PAVEMENT MARKERS, ONE-WAY AMBER
 - ◆ PR RAISED PAVEMENT MARKERS, TWO-WAY AMBER

REVISIONS	
NAME	DATE



ILLINOIS DEPARTMENT OF TRANSPORTATION

**INTERCHANGE DETAILS
I-172 & COLUMBUS ROAD
ADAMS COUNTY**

SCALE: VERT. _____
HORIZ. _____
DATE 08/03/2004

DRAWN BY LLQ
CHECKED BY LEL

c:\p_w\work\p\DOT\LAUGH\INL\dm26563\078-082 PROPOSED.COLUMBUS Interchange Plans_IDOT_REV.dgn
 Feb-11-2009 12:48:49PM
 *REF01