

SUGGESTED STAGE CONSTRUCTION SEQUENCE

STAGE I

1. THE CONTRACTOR SHALL PLACE MAX. WIDTH SIGNS AND ROAD CLOSED AHEAD SIGNS AS CALLED OUT IN SPECIAL PROVISIONS, BEFORE IMPLEMENTING ANY STAGE TRAFFIC CONTROL. THESE SIGNS SHALL BE INCLUDED IN THE COST OF "TRAFFIC CONTROL AND PROTECTION STANDARD 701321 (SPECIAL)".
2. ERECT TRAFFIC CONTROL FOR STAGE I.
3. REMOVE EXISTING STRUCTURE RIGHT, CL. STA. 136+64.8, AND EXISTING GUARDRAIL STA. 135+42 TO STA. 137+84 RT.
4. CONSTRUCT PROPOSED STAGE I DOUBLE BARREL 11'-0" X 11'-0" CULVERT AND WINGWALLS CL. STA. 136+64.8.
5. MILL EXISTING H.M.A. SURFACE COURSE FOR SUPERELEVATION SLOPE CORRECTION.
6. CONSTRUCT PROPOSED H.M.A. BASE COURSE 10" RT. STA. 130+62 TO STA. 144+38 (12'-0" WIDE MAX.).
7. CONSTRUCT H.M.A. BASE COURSE RT. STA. 136+27 TO STA. 137+02.
8. SEED RT. SIDE.

STAGE II

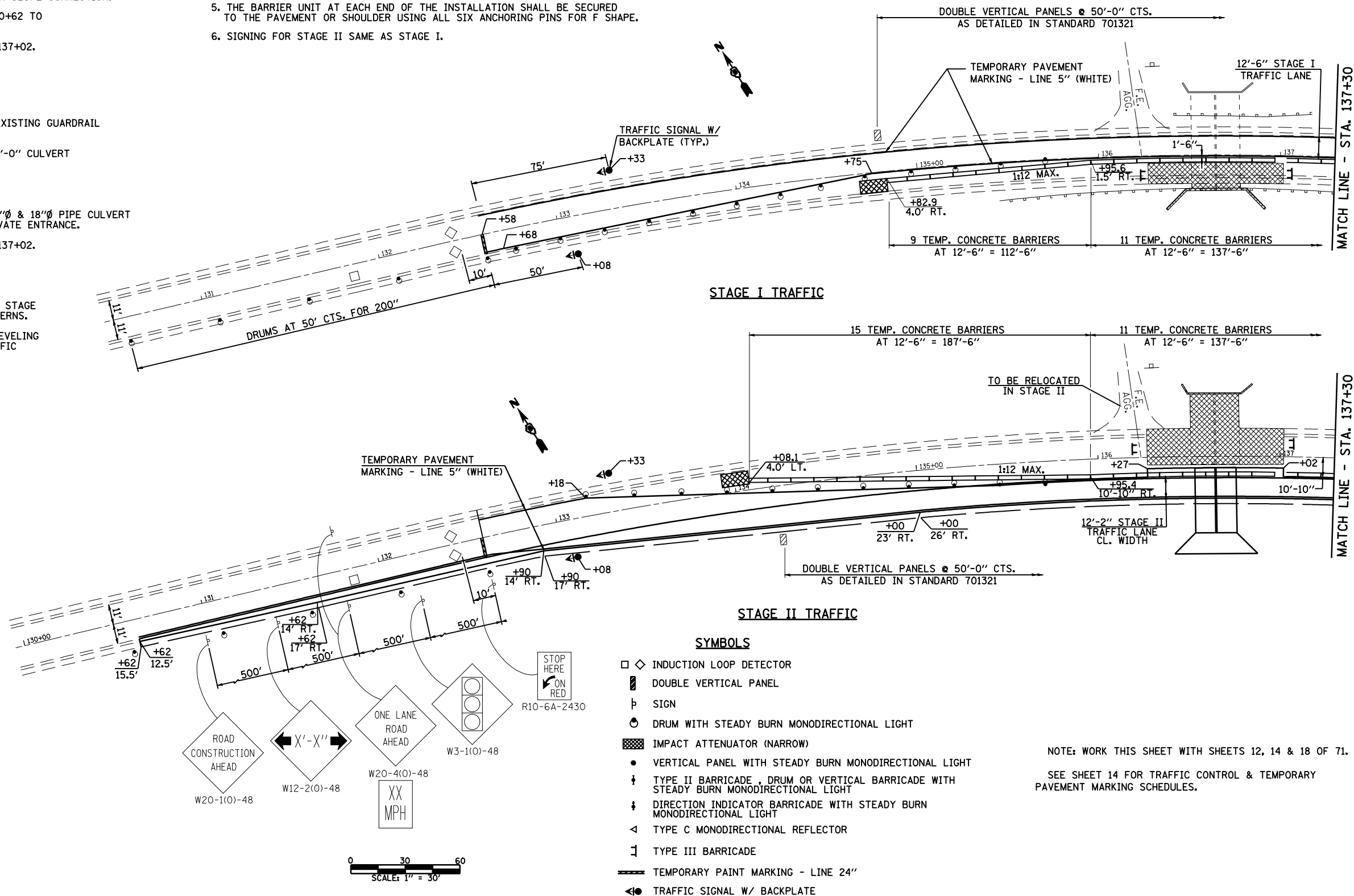
1. ERECT TRAFFIC CONTROL FOR STAGE II.
2. REMOVE EXISTING STRUCTURE LEFT CL. STA. 136+64.8, AND EXISTING GUARDRAIL STA. 136+42 TO STA. 137+38 LT.
3. CONSTRUCT PROPOSED STAGE II DOUBLE BARREL 11'-0" X 11'-0" CULVERT AND WINGWALLS CL. STA. 136+64.40.
4. CONSTRUCT REMAINING PROPOSED H.M.A. BASE COURSE 10" LT. STA. 130+62 TO STA. 144+38.
5. REMOVE EXISTING 24"Ø & 15"Ø C.M.P. AND INSTALL NEW 24"Ø & 18"Ø PIPE CULVERT TYPE 2 CS/A. CONSTRUCT NEW FIELD ENTRANCES AND PRIVATE ENTRANCE.
6. CONSTRUCT H.M.A. BASE COURSE LT. STA. 136+27 TO STA. 137+02.
7. SEED LT. SIDE.

FINAL

1. INSTALL SHORT-TERM PAVEMENT MARKINGS AND REMOVE ALL STAGE TRAFFIC CONTROL AND RE-ESTABLISH NORMAL TRAFFIC PATTERNS.
2. REMOVE SHORT TERM PAVEMENT MARKINGS AND COMPLETE LEVELING BINDER AND H.M.A. SURFACE COURSE ON IL. 125 UNDER TRAFFIC WITH FLAGGERS.
3. FINAL STRIPING, SEEDING AND MISCELLANEOUS CLEANUP.

GENERAL NOTES

1. THIS TRAFFIC CONTROL DETAIL SHALL BE USED IN CONJUNCTION WITH STANDARD 701321.
2. THE CONTRACTOR SHALL NOTIFY THE DISTRICT 6 TRAFFIC SECTION OF THE BUREAU OF OPERATIONS (PH. 785-5836) AT LEAST 21 DAYS PRIOR TO IMPLEMENTING STAGE TRAFFIC CONTROL.
3. EXISTING PAVEMENT MARKINGS THAT CONFLICT WITH THE REVISED STAGE TRAFFIC PATTERNS DURING ALL PHASES OF STAGE CONSTRUCTION SHALL BE REMOVED AS SPECIFIC IN SECTION 783 OF THE STANDARD SPECIFICATIONS AND PAID FOR AS "PAVEMENT MARKING REMOVAL".
4. THE CONTRACTOR SHALL MAINTAIN FULL OPERATIONAL STATUS OF ALL SIDEROADS AND ACCESS TO ALL PRIVATE AND COMMERCIAL PROPERTIES DURING ALL PHASES OF CONSTRUCTION.
5. THE BARRIER UNIT AT EACH END OF THE INSTALLATION SHALL BE SECURED TO THE PAVEMENT OR SHOULDER USING ALL SIX ANCHORING PINS FOR F SHAPE.
6. SIGNING FOR STAGE II SAME AS STAGE I.



FILE NAME = D672875-sht-staging2.dgn

USER NAME =
PLOT SCALE =
PLOT DATE = Jan-30-2009 09:38:00AM

DESIGNED - RKA
DRAWN - RKA
CHECKED - CPK
DATE - 04/07/08

REVISED -
REVISED -
REVISED -
REVISED -



Allen Henderson & Associates, Inc.
Civil and Structural Engineers Springfield, IL.
62708 Phone: (217)544-8033 IL Design Firm
No. 184-001907

STAGE CONSTRUCTION TRAFFIC DETAILS
STA. 136 + 64.40 / S.N. 009-2506

SCALE: 1"=30' SHEET NO. 17 OF 71 SHEETS STA. TO STA.

F.A.P. RTE.	SECTION	COUNTY	TOTAL SHEETS	SHEET NO.
67	(6X-1)B-2	CASS	71	13
CONTRACT NO. 72875				
FED. ROAD DIST. NO. ILLINOIS FED. AID PROJECT				