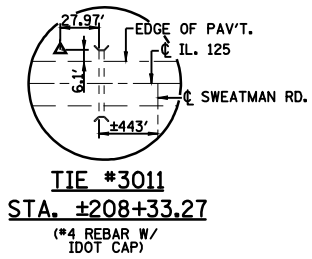


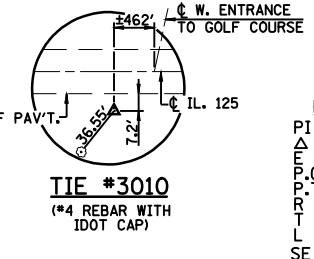
**EXIST. CURVE 559**  
 PI STA = 210+11.20  
 $\Delta = 7^\circ 08' 00''$  (LT)  
 P.C. STA = 207+72.84  
 P.T. STA = 212+48.94  
 R = 3,824.149  
 L = 238.358  
 E = 476.100  
 F = 7.421  
 SE TRANS:  
 L.T. STA. 207+25.69 TO 208+32.99  
 R.T. STA. 205+79.39 TO 208+32.99  
 SE TRANS:  
 L.T. STA. 211+88.79 TO 212+96.09  
 R.T. STA. 211+88.79 TO 214+42.40



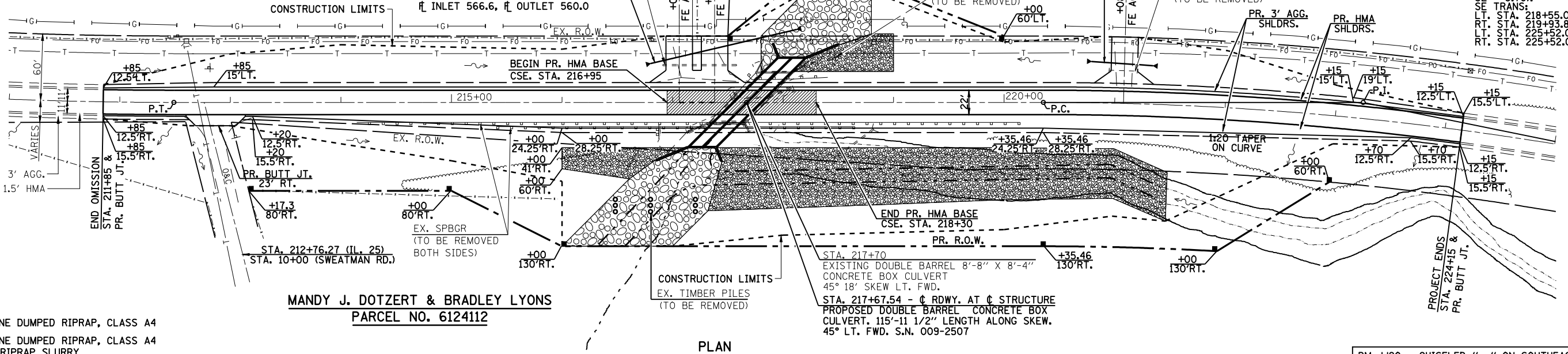
SECTION 36, T. 18 N., R. 11 W., 3rd P.M.

JOHN W. & LOIS A. DOTZERT  
 PARCEL NO. 6124113

\*8 NAIL & BC IN 11" DOUBLE FORK TREE



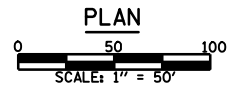
**EXIST. CURVE 560**  
 PI STA = 223+24.78  
 $\Delta = 11^\circ 31' 26''$  (RT)  
 P.C. STA = 220+35.46  
 P.T. STA = 226+12.16  
 R = 2,867.33  
 L = 289.33  
 E = 576.70  
 F = 3.70%  
 SE TRANS:  
 L.T. STA. 218+55.01 TO 220+95.61  
 R.T. STA. 219+93.82 TO 220+95.61  
 LT. STA. 225+52.01 TO 227+92.61  
 RT. STA. 225+52.01 TO 226+72.31



DATE	
BY	
PLAN	
NO.	
DATE	
BY	
PROFILE	
NO.	

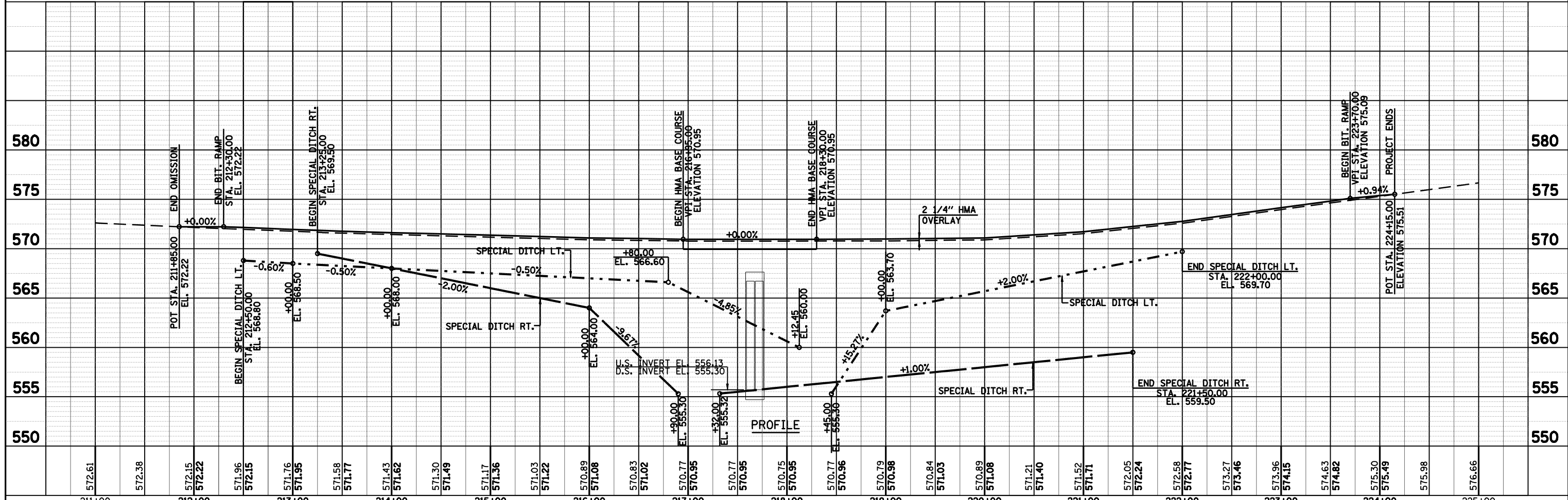
- STONE DUMPED RIPRAP, CLASS A4
- STONE DUMPED RIPRAP, CLASS A4 W/ RIPRAP SLURRY
- PAVEMENT REMOVAL

NOTE: WORK THIS SHEET WITH SHEET NO. 23 OF 71.



BM JJ20 - CHISELED " " ON SOUTHEAST WINGWALL  
 STA. 217+67.01 21.7' RT. EL. 570.33

DATE	
BY	
PROFILE	
NO.	
DATE	
BY	
PLAN	
NO.	



FILE NAME = D672875-shr-plnprf3.dgn	USER NAME =	DESIGNED - RKA	REVISED -	<p><b>Allen Henderson &amp; Associates, Inc.</b>        Civil and Structural Engineers Springfield, IL        62708 Phone: (217)544-8033 IL Design Firm        No. 184-001907</p>	<b>PLAN &amp; PROFILE</b>		F.A.P. RTE. = 67	SECTION = (6X-1)B-2	COUNTY = CASS	TOTAL SHEETS = 71	SHEET NO. = 21
PLOT SCALE =	DESIGNED - RKA	REVISED -	SCALE: 1"=50'		STA. 217+67.54 /S.N. 009-2507		CONTRACT NO. 72875		ILLINOIS FED. AID PROJECT		
PLOT DATE = Feb-05-2009 08:15:54AM	CHECKED -	REVISED -	SHEET NO. 10 OF 71 SHEETS		STA. TO STA.						
	CHECKED -	REVISED -									