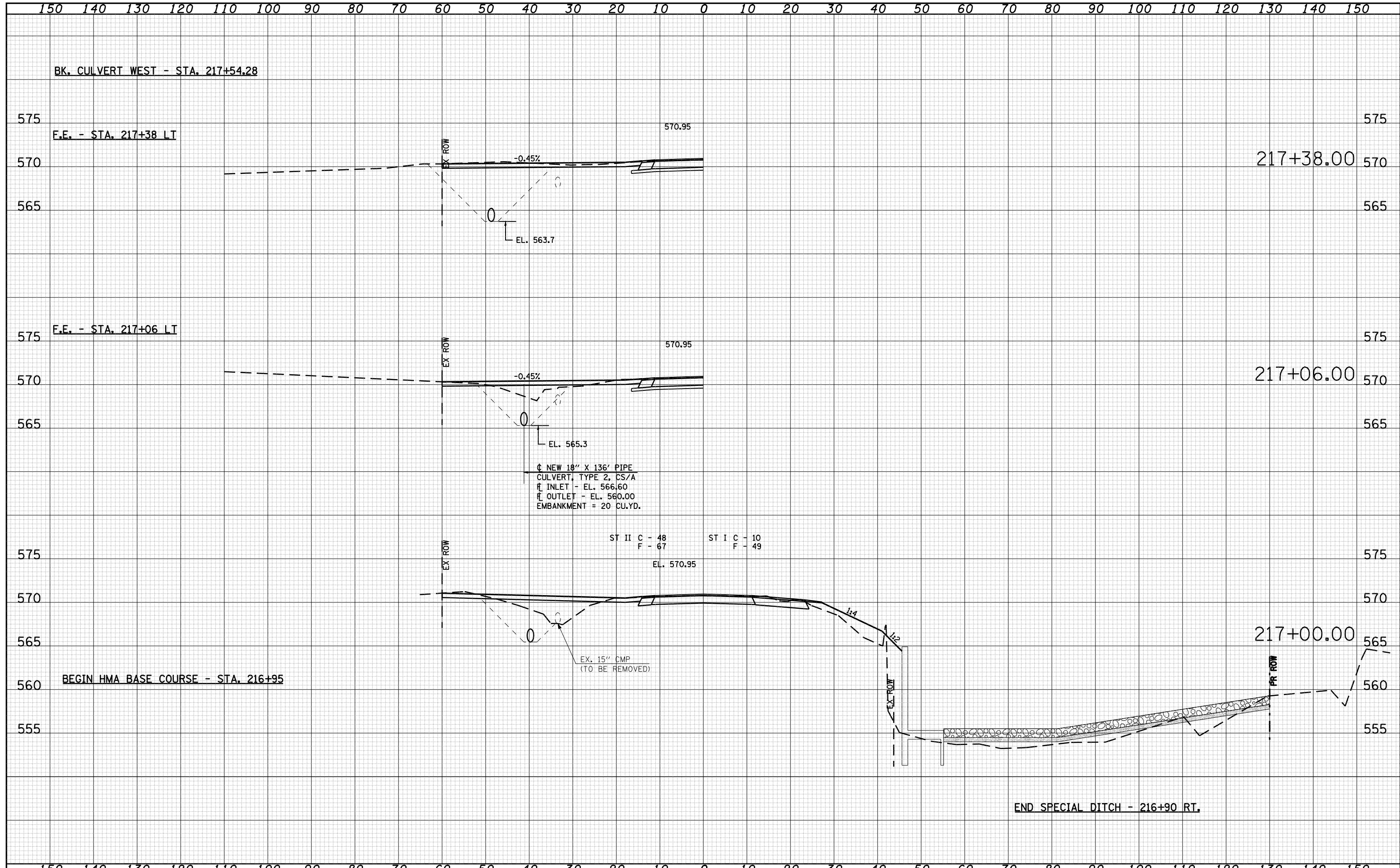


DATE	
BY	
SURVEYED	
PLOTTED	
TEMPLATE	
AREAS	
CHECKED	
FINAL SURVEY	
NOTE BOOK	
NO.	

DATE	
BY	
SURVEYED	
PLOTTED	
TEMPLATE	
AREAS	
CHECKED	
ORIGINAL SURVEY	
NOTE BOOK	
NO.	



FILE NAME = D672875-shr-xssht3.dgn

USER NAME =	DESIGNED - RKA	REVISED -
	DRAWN - RKA	REVISED -
PLOT SCALE =	CHECKED - CPK	REVISED -
PLOT DATE = Feb-05-2009 08:16:33AM	DATE - 3/25/08	REVISED -

DESIGNED - RKA	REVISED -
DRAWN - RKA	REVISED -
CHECKED - CPK	REVISED -
DATE - 3/25/08	REVISED -

Allen Henderson & Associates, Inc.
 Civil and Structural Engineers Springfield, IL
 62708 Phone: (217)544-8033 IL Design Firm
 No. 184-001907

CROSS SECTIONS	
STA. 217 + 67.54 / S.N. 009-2507	
SCALE: VARIES	SHEET NO. 67 OF 71 SHEETS
STA.	TO STA.

F.A.P. RTE. 67	SECTION (6X-1)B-2	COUNTY CASS	TOTAL SHEETS 71	SHEET NO. 67
FED. ROAD DIST. NO. ILLINOIS			FED. AID PROJECT CONTRACT NO. 72875	