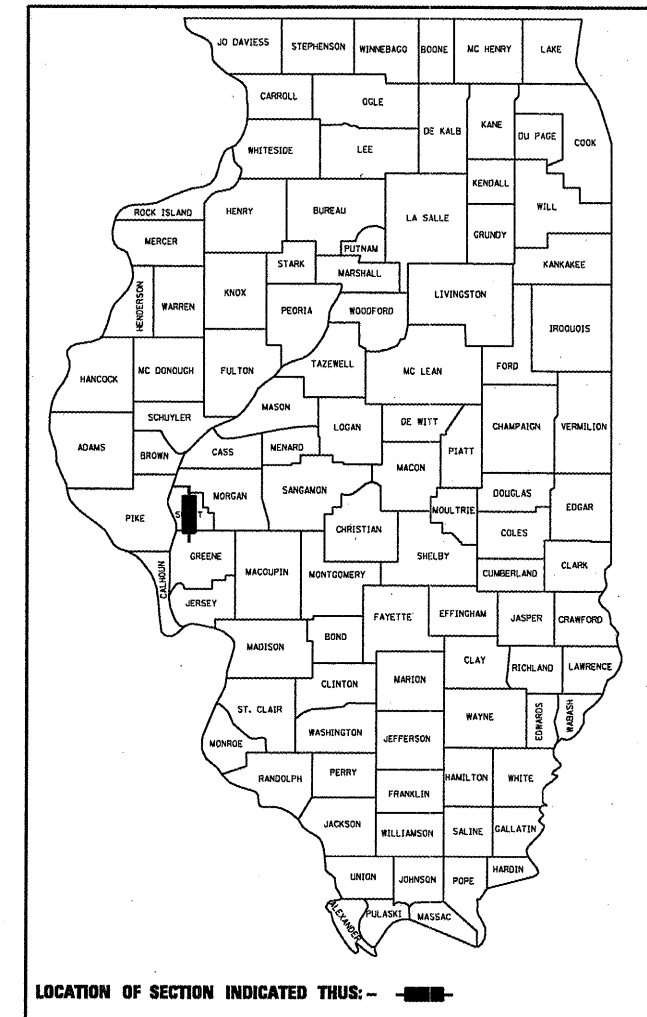


STATE OF ILLINOIS  
DEPARTMENT OF TRANSPORTATION  
DIVISION OF HIGHWAYS

F.A.P. RTE.	SECTION	COUNTY	TOTAL SHEETS	SHEET NO.
566	(1-NRHM,2)RS-3	SCOTT	30	1
FED. ROAD DIST. NO.	ILLINOIS	CONTRACT NO. 72882		

D-96-517-04



FOR INDEX OF SHEETS, SEE SHEET NO. 2

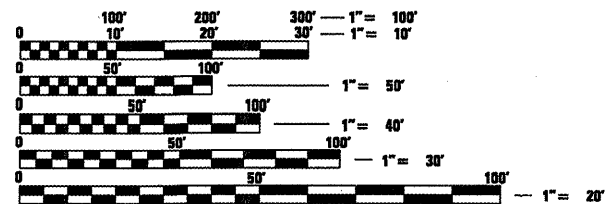
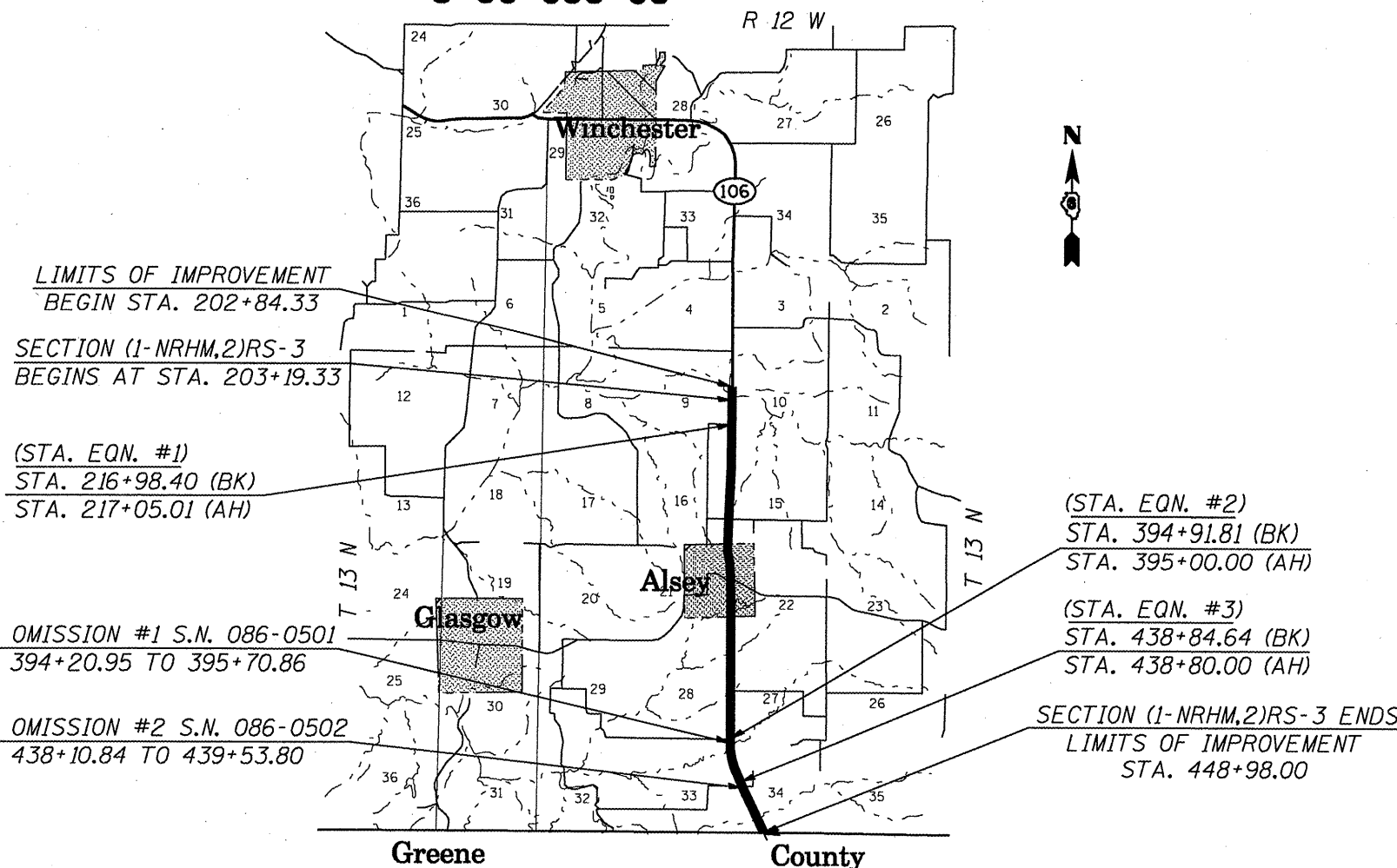
HIGHWAY CLASSIFICATION

F.A.P. ROUTE 566 (IL 106)

ADT: 1,323 (2007) PV = 82.0%  
ADT: 1,650 (2029) SU = 11.0%  
DESIGN SPEED: 55 MPH MU = 7.0%  
POSTED SPEED: 55 MPH  
CLASSIFICATION: MINOR ARTERIAL (NON-URBAN)

**PROPOSED  
HIGHWAY PLANS**

FAP ROUTE 566 (IL 106)  
SECTION (1-NRHM,2)RS-3  
PROJECT: ESP-0566 (008)  
RESURFACING  
SCOTT COUNTY  
C-96-058-08



FULL SIZE PLANS HAVE BEEN PREPARED USING STANDARD ENGINEERING SCALES. REDUCED SIZED PLANS WILL NOT CONFORM TO STANDARD SCALES. IN MAKING MEASUREMENTS ON REDUCED PLANS, THE ABOVE SCALES MAY BE USED.

J.U.L.I.E.  
JOINT UTILITY LOCATION INFORMATION FOR EXCAVATION  
1-800-892-0123  
OR 811

PROJECT ENGINEER: SAL MADONIA (217) 782-4716  
PROJECT MANAGER: RENE CABRERA (217) 557-9062  
TECHNICIAN: JONATHAN COX  
CONTRACT NO. 72882

GROSS LENGTH = 24,603.51 FT. = 4.66 MI.  
NET LENGTH = 24,568.51 FT. = 4.65 MI.

STATE OF ILLINOIS  
DEPARTMENT OF TRANSPORTATION  
DIVISION OF HIGHWAYS

SUBMITTED February 6, 2009  
Rene Z. Duda  
DEPUTY DIRECTOR OF HIGHWAYS, REGION ENGINEER

March 13, 2009  
Charles J. Dargatzis  
ENGINEER OF DESIGN AND ENVIRONMENT

March 13, 2009  
Christine M. Reed  
DIRECTOR OF HIGHWAYS, CHIEF ENGINEER

**PRINTED BY THE AUTHORITY  
OF THE STATE OF ILLINOIS**