

[729.0'] \*\* (9) STA. 308+32.00 TO 315+61.00  
 [558.2'] (28) STA. 439+53.80 TO 445+12.00  
 [288.0'] \*\*\* (30) STA. 445+75.00 TO 448+63.00

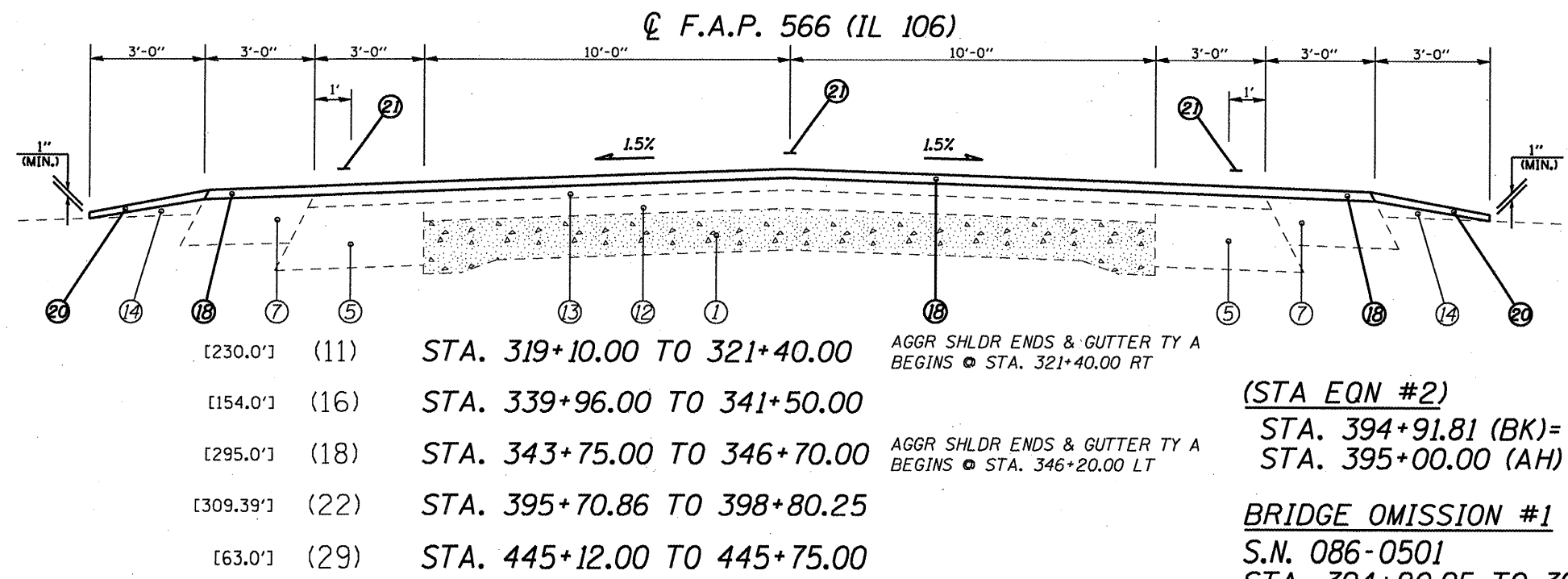
EXIST. PCC&G LOCATED FR. STA. 307+94.50 TO 311+38.20 LT  
 EXIST. GUTTER TYPE A ENDS AT STA. 448+58.00 LT

(STA EQN #3)  
 STA. 438+84.64 (BK)=  
 STA. 438+80.00 (AH)

BRIDGE OMISSION #2  
 S.N. 086-0502  
 STA. 438+10.84 TO 438+84.64  
 STA. 438+80.00 TO 439+53.80

- ### LEGEND
- ① EXIST. P.C.C. PAVEMENT 9"-7"-9"
  - ② EXIST. BITUMINOUS CONCRETE BASE COURSE VARIABLE DEPTH
  - ③ EXIST. BITUMINOUS CONCRETE BASE COURSE WIDENING 9"
  - ④ EXIST. BITUMINOUS CONCRETE BASE COURSE WIDENING 10"
  - ⑤ EXIST. BITUMINOUS CONCRETE BASE COURSE WIDENING 10 1/2"
  - ⑥ EXIST. BITUMINOUS CONCRETE BASE COURSE WIDENING 8"
  - ⑦ EXIST. BITUMINOUS SHOULDER 8"
  - ⑧ EXIST. BITUMINOUS SHOULDER
  - ⑨ EXIST. CONCRETE GUTTER, TY A (MODIFIED)
  - ⑩ EXIST. CONCRETE GUTTER, TY B
  - ⑪ EXIST. CONCRETE GUTTER, TY A
  - ⑫ EXIST. BITUMINOUS OVERLAY, 3"
  - ⑬ EXIST. BITUMINOUS OVERLAY, 2"
  - ⑭ EXIST. AGGREGATE SHOULDERS, TY B
  - ⑮ PROP. HMA SURFACE REMOVAL, VARIABLE DEPTH \*
  - ⑯ PROP. HMA SURFACE REMOVAL, 2"
  - ⑰ PROP. LEVELING BINDER (MACHINE METHOD), N50 3/4"
  - ⑱ PROP. HMA CONCRETE SURFACE COURSE, MIX "C", N50 1 1/2"
  - ⑲ PROP. HMA SHOULDERS, 2 1/4"
  - ⑳ PROP. AGGREGATE SHOULDERS, TY B
  - ㉑ PROP. PAINT PAVEMENT MARKING - LINE 5"

\* NOMINAL MILLING DEPTH 1/2" @ 1'

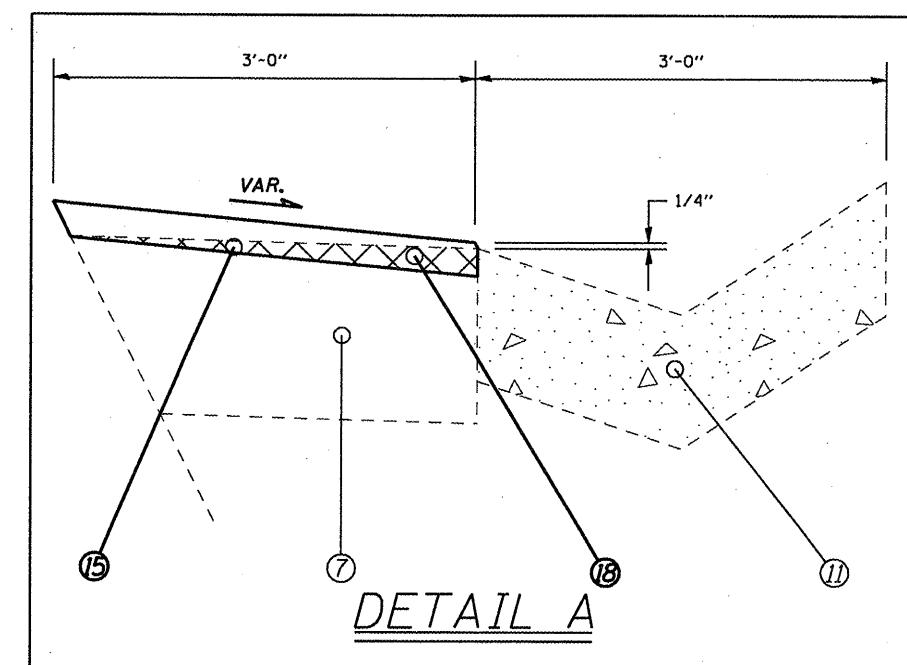


[230.0'] (11) STA. 319+10.00 TO 321+40.00  
 [154.0'] (16) STA. 339+96.00 TO 341+50.00  
 [295.0'] (18) STA. 343+75.00 TO 346+70.00  
 [309.39'] (22) STA. 395+70.86 TO 398+80.25  
 [63.0'] (29) STA. 445+12.00 TO 445+75.00

AGGR SHLDR ENDS & GUTTER TY A BEGINS @ STA. 321+40.00 RT  
 AGGR SHLDR ENDS & GUTTER TY A BEGINS @ STA. 346+20.00 LT

(STA EQN #2)  
 STA. 394+91.81 (BK)=  
 STA. 395+00.00 (AH)

BRIDGE OMISSION #1  
 S.N. 086-0501  
 STA. 394+20.95 TO 394+91.81  
 STA. 395+00.00 TO 395+70.86



DETAIL A

REFER TO MILLING SCHEDULE ON PG. 9

(NOT TO SCALE)

FILE NAME *	USER NAME = cbrerers	DESIGNED - RSC	REVISED -	<b>STATE OF ILLINOIS DEPARTMENT OF TRANSPORTATION</b>	<b>TYPICAL SECTIONS</b>	F.A.P. RTE. 566	SECTION I-NRHM,2IRS-3	COUNTY Scott	TOTAL SHEETS 30	SHEET NO. 7		
at\pw\work\pwsdot\cbrerers\dms23631\SH	Typicals.dgn	DRAWN - JWC	REVISED -			SCALE: NTS	SHEET NO. 4 OF 5 SHEETS	STA. 308+32.00 TO STA. 445+75.00	CONTRACT NO. 72882			
	PLOT SCALE = 106.0000' / IN.	CHECKED - RSC	REVISED -			FED. ROAD DIST. NO. [ILLINOIS] FED. AID PROJECT						
	PLOT DATE = Feb-95-2009 02:47:55PM	DATE -	REVISED -									