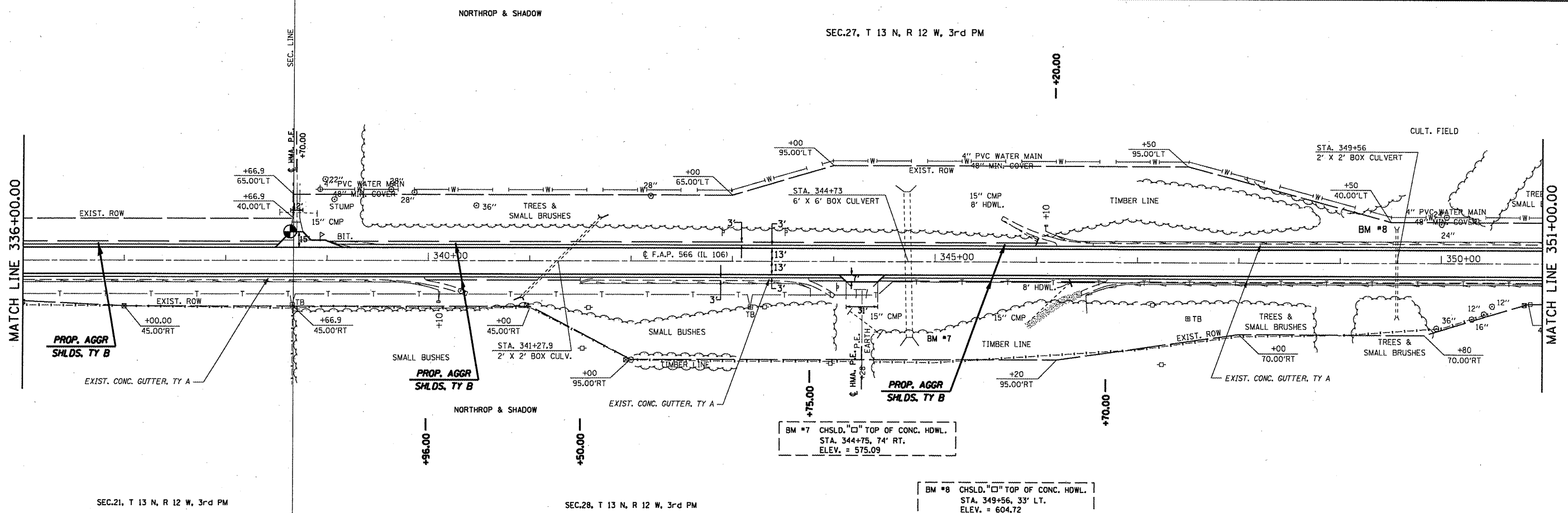


BM #6 RR SPIKE IN P.P.
STA. 335+63.46' RT.
ELEV. = 620.16



BM #7 CHSLD. "□" TOP OF CONC. HDWL.
STA. 344+75.74' RT.
ELEV. = 575.09

BM #8 CHSLD. "□" TOP OF CONC. HDWL.
STA. 349+56.33' LT.
ELEV. = 604.72

FILE NAME =
c:\pwork\pwork\dot\cox\jw\dms23631\shp\plan

USER NAME = cox,jw
PLOT SCALE = 106.0000' / IN.
PLOT DATE = Feb-95-2009 11:46:47AM

DESIGNED - RSC
DRAWN - JWC
CHECKED - RSC
DATE -

REVISED -
REVISED -
REVISED -
REVISED -

**STATE OF ILLINOIS
DEPARTMENT OF TRANSPORTATION**

PLAN SHEETS

SCALE: 50 SHEET NO. 9 OF 13 SHEETS STA. 326+00.00 TO STA. 351+00.00

F.A.P. RTE.	SECTION	COUNTY	TOTAL SHEETS	SHEET NO.
566	(1-NRHM,2RS-3)	Scott	30	23
CONTRACT NO. 72882				
FED. ROAD DIST. NO. ILLINOIS FED. AID PROJECT				