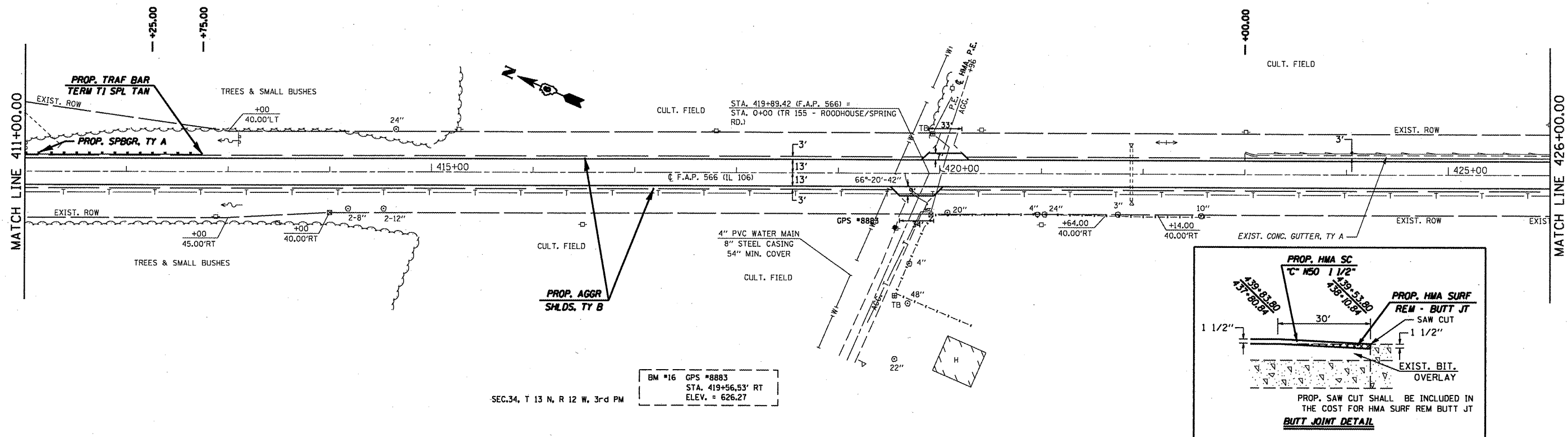


WILMA ROBERTSON &
MAYE WILSON

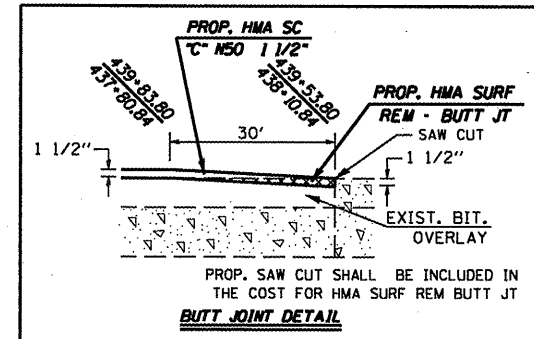
SEC.34, T 13 N, R 12 W, 3rd PM

Y & V SUMMERS

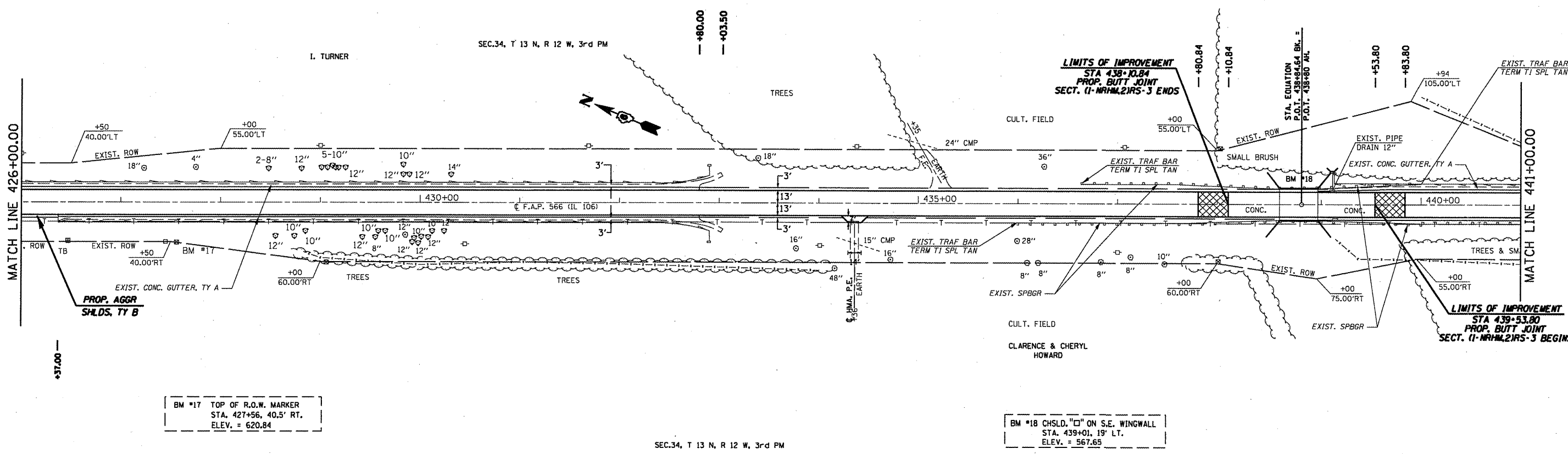


BM #16 GPS #8883
STA. 419+56.53' RT
ELEV. = 626.27

SEC.34, T 13 N, R 12 W, 3rd PM



BRIDGE OMISSION
S.N. 086-0502
STA. 438+10.84 TO 439+53.80



BM #17 TOP OF R.O.W. MARKER
STA. 427+56, 40.5' RT.
ELEV. = 620.84

BM #18 CHSLD. "C" ON S.E. WINGWALL
STA. 439+01.19' LT.
ELEV. = 567.65

SEC.34, T 13 N, R 12 W, 3rd PM

FILE NAME =	USER NAME = cox.jw	DESIGNED - RSC	REVISED -	STATE OF ILLINOIS DEPARTMENT OF TRANSPORTATION	PLAN SHEETS			F.A.P. RTE. 566	SECTION (I-NRHM,2RS-3)	COUNTY Scott	TOTAL SHEETS 30	SHEET NO. 26
al:\pw\work\pvidot\cox\jw\dms23631\shp\plan	90.dgn	DRAWN - JWC	REVISED -		SCALE: 50	SHEET NO. 12 OF 13 SHEETS	STA. 411+00.00 TO STA. 441+00.00	FED. ROAD DIST. NO.	ILLINOIS FED. AID PROJECT	CONTRACT NO. 72882		
	PLOT SCALE = 106.0000' / IN.	CHECKED - RSC	REVISED -									
	PLOT DATE = Feb-05-2009 11:46:50AM	DATE	REVISED -									