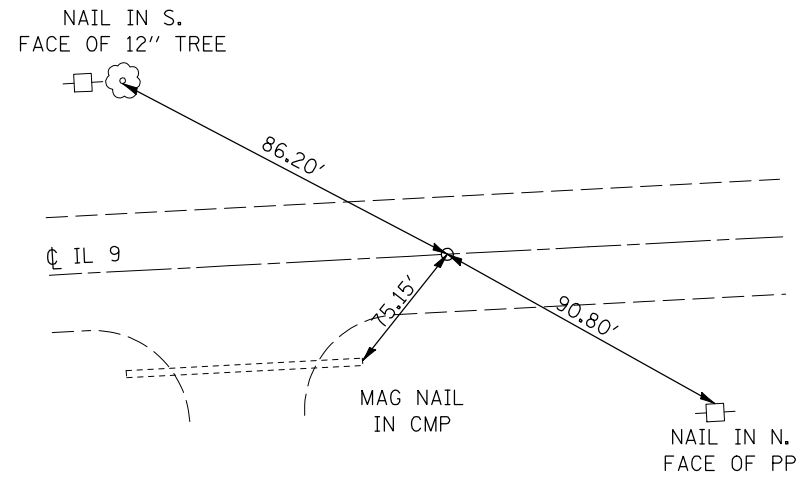
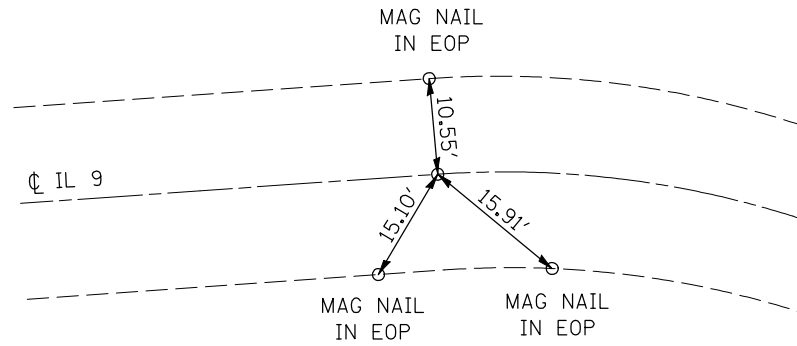


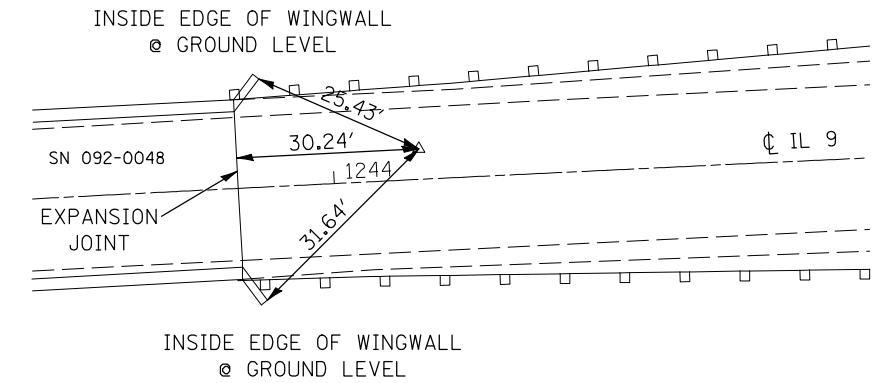
P.O.T.
STA. 1207 + 30.62



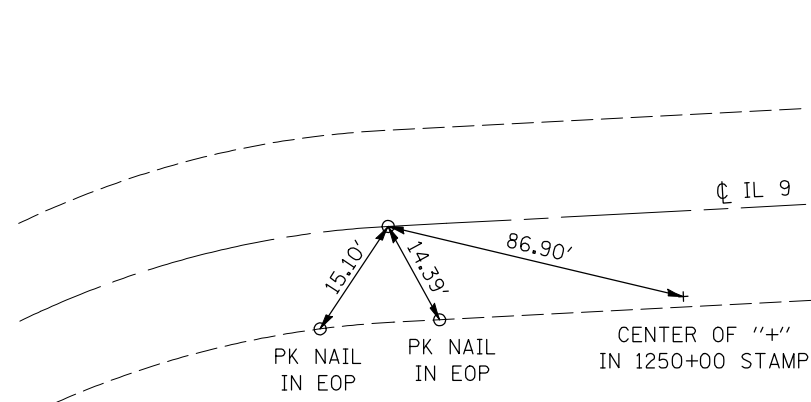
P.C.
STA. 1239 + 15.20



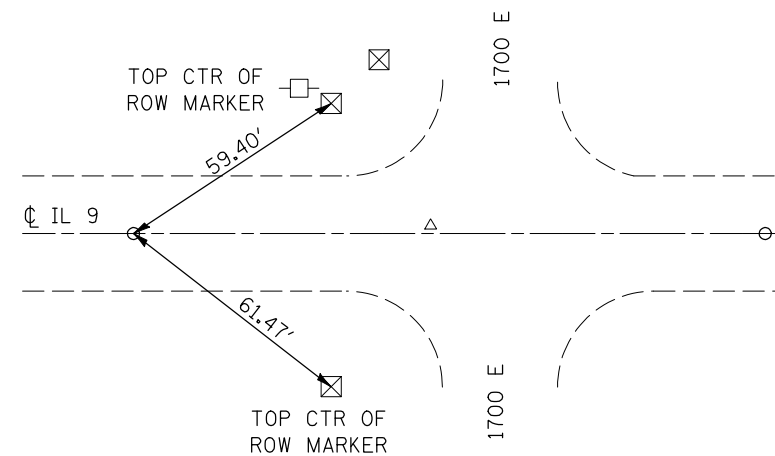
P.I.
STA. 1244 + 14.38, 5.09' LT



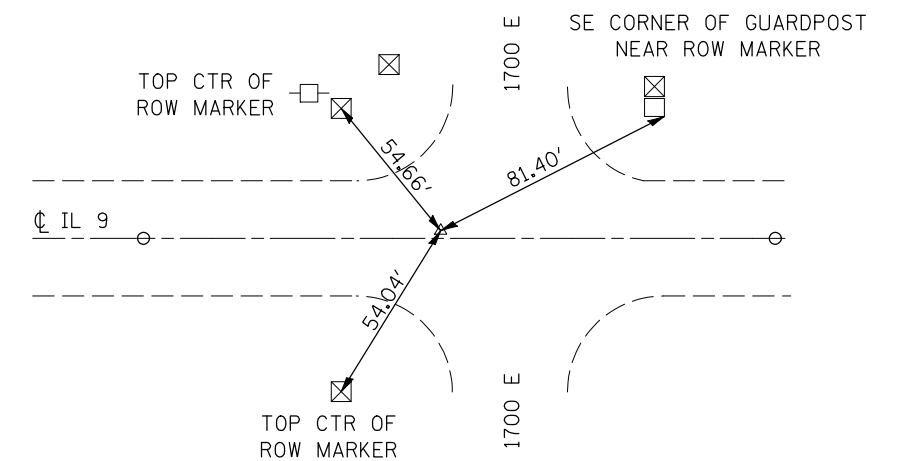
P.T.
STA. 1249 + 13.42



P.C.
STA. 1259 + 32.41



P.I.
STA. 1259 + 89.08, 0.14' LT



FILE NAME =	USER NAME = ceorlockjd	DESIGNED -	REVISED -
ct:\pw\work\PWIDOT\CEARLOCKJD\dms87652\690866-sh1-ATB.dgn		DRAWN -	REVISED -
	PLOT SCALE = 40.0000' / IN.	CHECKED -	REVISED -
	PLOT DATE = 2/6/2009	DATE -	REVISED -

STATE OF ILLINOIS
DEPARTMENT OF TRANSPORTATION

TIE POINTS

SCALE: SHEET NO. OF SHEETS STA. TO STA.

F.A.P. RTE.	SECTION	COUNTY	TOTAL SHEETS	SHEET NO.
697	46RS-8&1RS-2&4GBDR	VERMILION	75	17
FED. ROAD DIST. NO. ILLINOIS FED. AID PROJECT			CONTRACT NO. 90866	