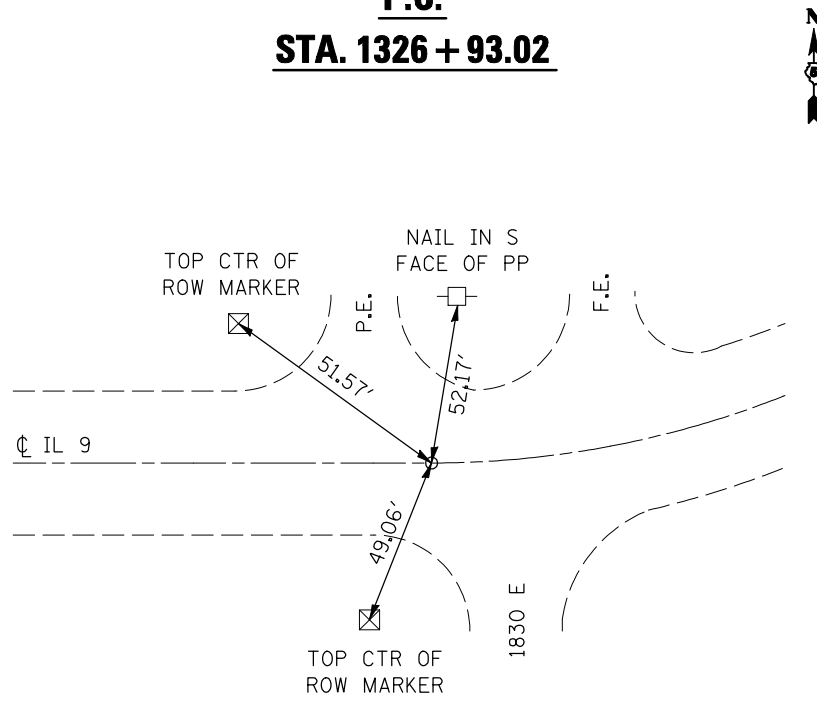
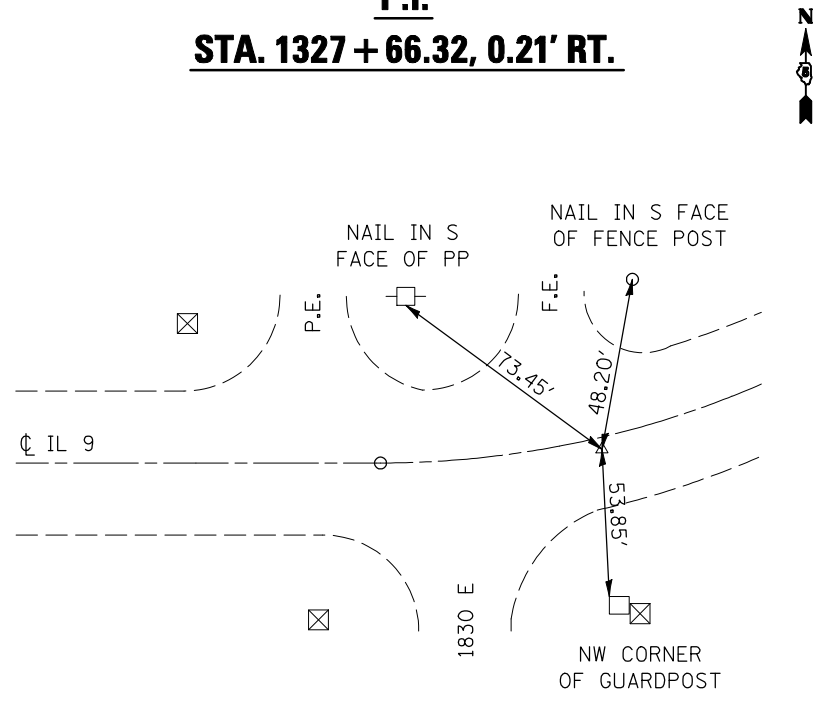


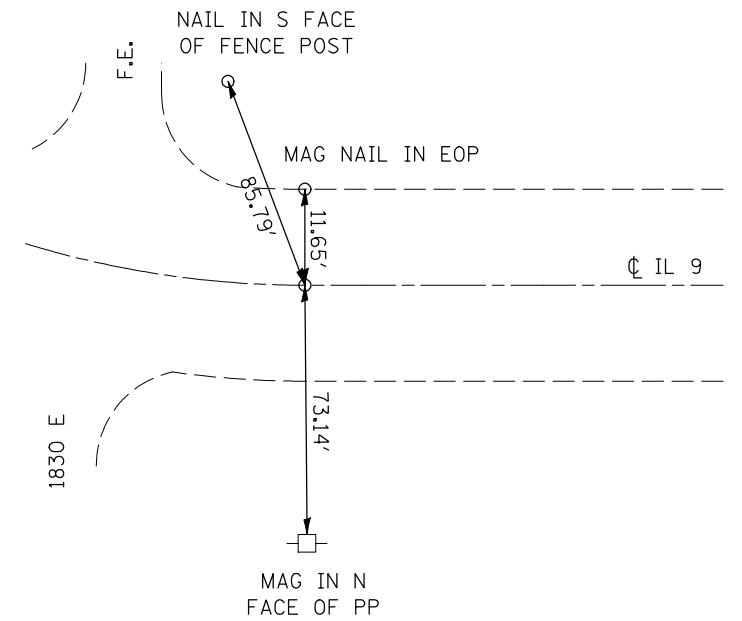
P.C.
STA. 1326 + 93.02



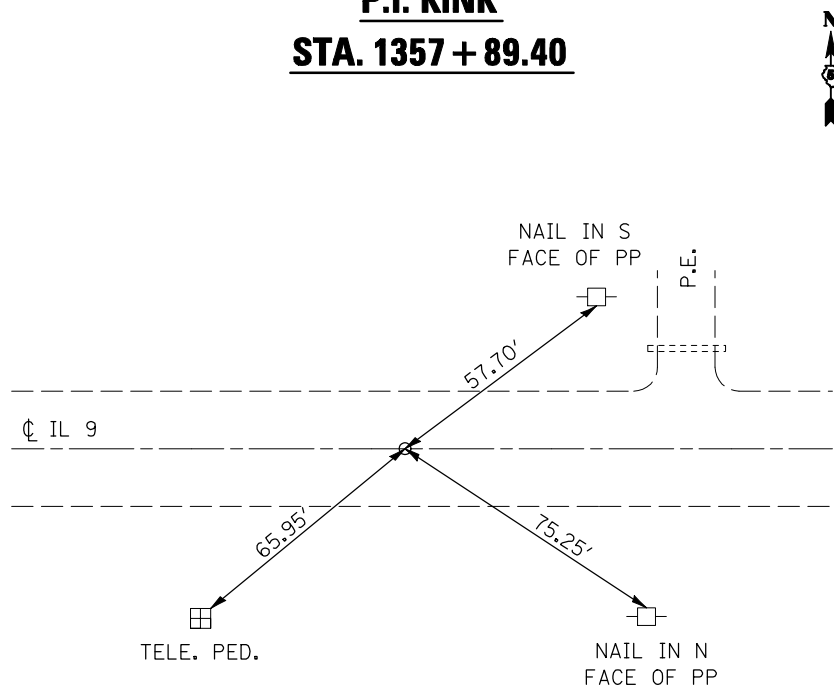
P.I.
STA. 1327 + 66.32, 0.21' RT.



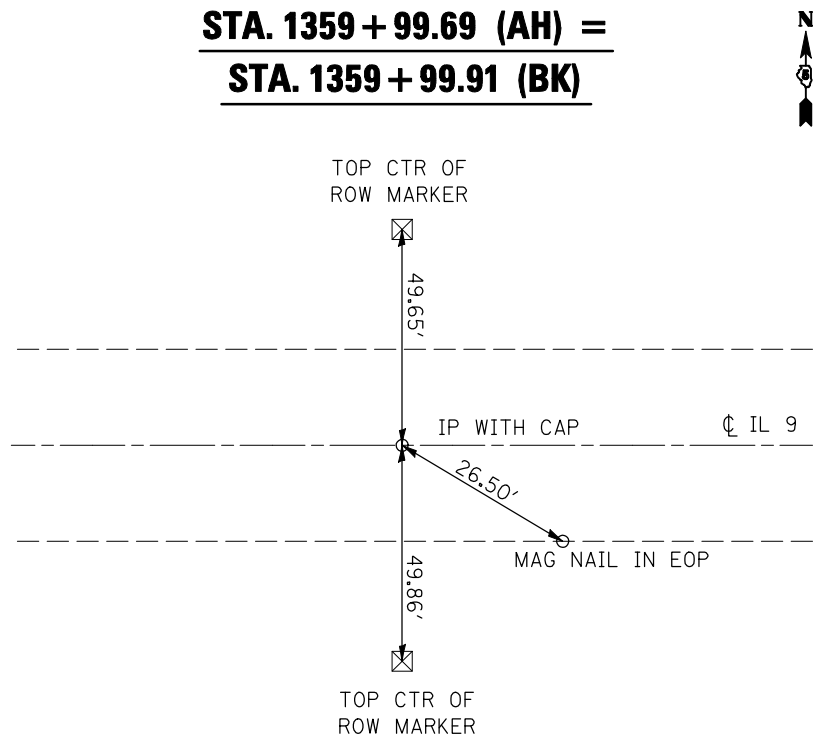
P.T.
STA. 1328 + 39.62



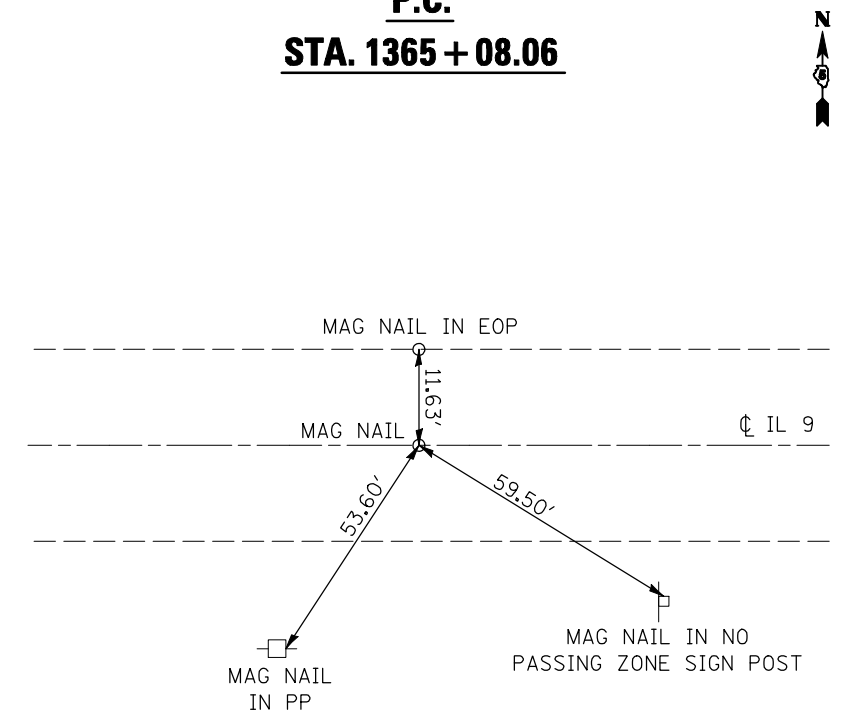
P.I. KINK
STA. 1357 + 89.40



P.O.T. STA EQUATION
STA. 1359 + 99.69 (AH) =
STA. 1359 + 99.91 (BK)



P.C.
STA. 1365 + 08.06



FILE NAME =	USER NAME = ceorlockjd	DESIGNED -	REVISED -
ct:\pw\work\PWIDOT\CEARLOCKJD\dms87652\4590866-sht-ATB.dgn		DRAWN -	REVISED -
	PLOT SCALE = 40.0000' / IN.	CHECKED -	REVISED -
	PLOT DATE = 2/6/2009	DATE -	REVISED -

STATE OF ILLINOIS
DEPARTMENT OF TRANSPORTATION

TIE POINTS			
SCALE:	SHEET NO.	OF SHEETS	STA. TO STA.

F.A.P. RTE.	SECTION	COUNTY	TOTAL SHEETS	SHEET NO.
697	46RS-8&1RS-2&46BDR	VERMILION	75	19
FED. ROAD DIST. NO. ILLINOIS FED. AID PROJECT			CONTRACT NO. 90866	