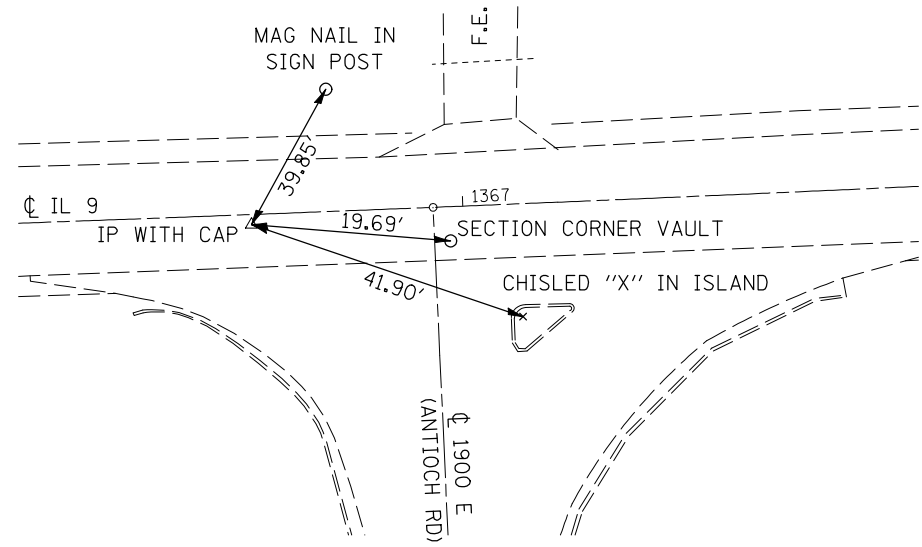
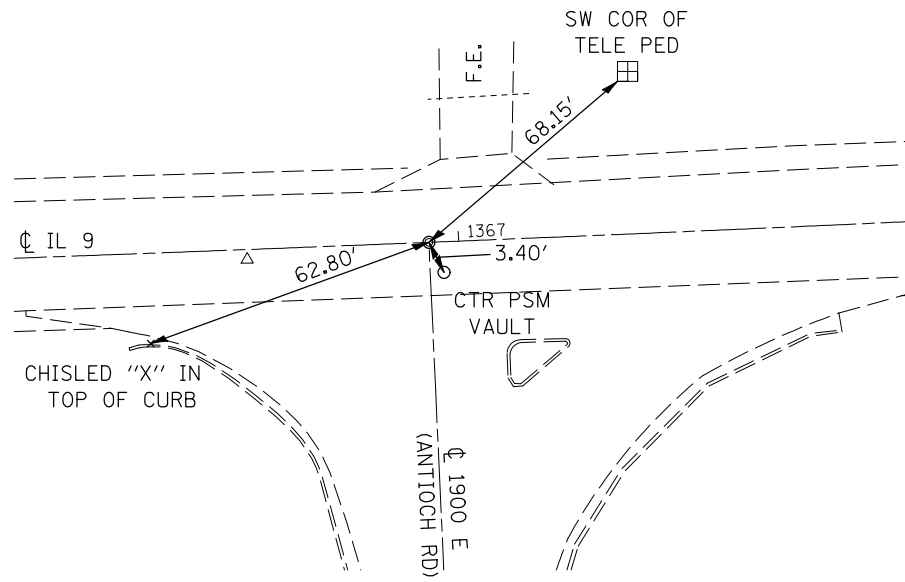


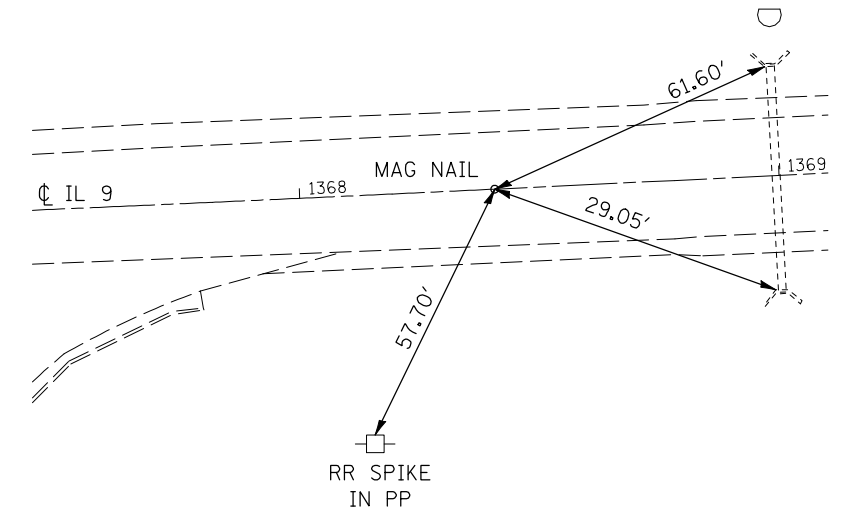
P.I.
STA. 1366 + 74.38, 0.71' RT.



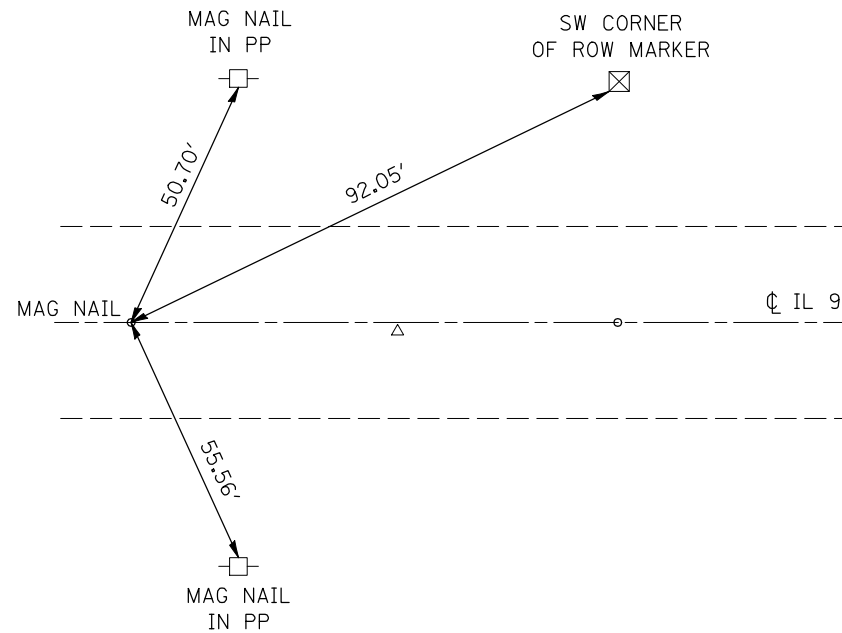
P.O.T.
STA. 1366 + 93.80 (IL 9)
STA. 100 + 00 (ANTIOCH RD)



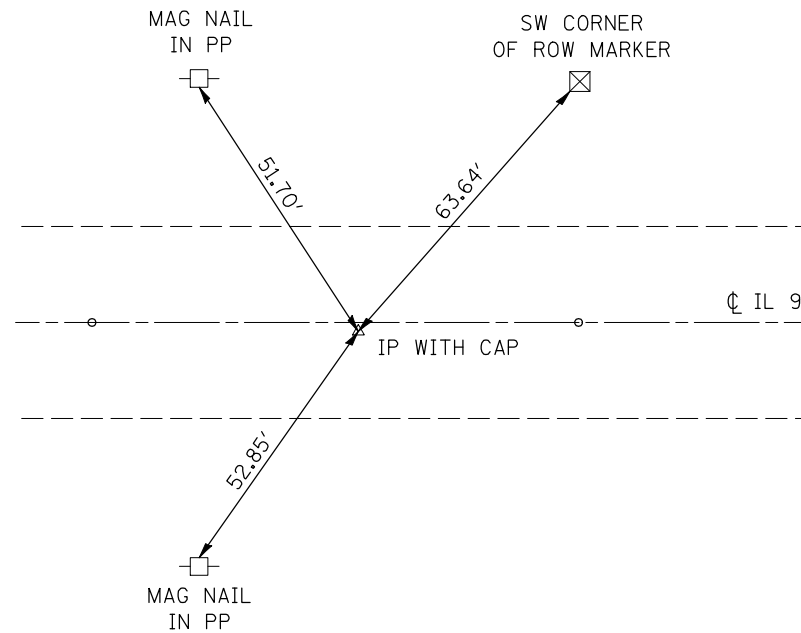
P.T.
STA. 1368 + 40.68



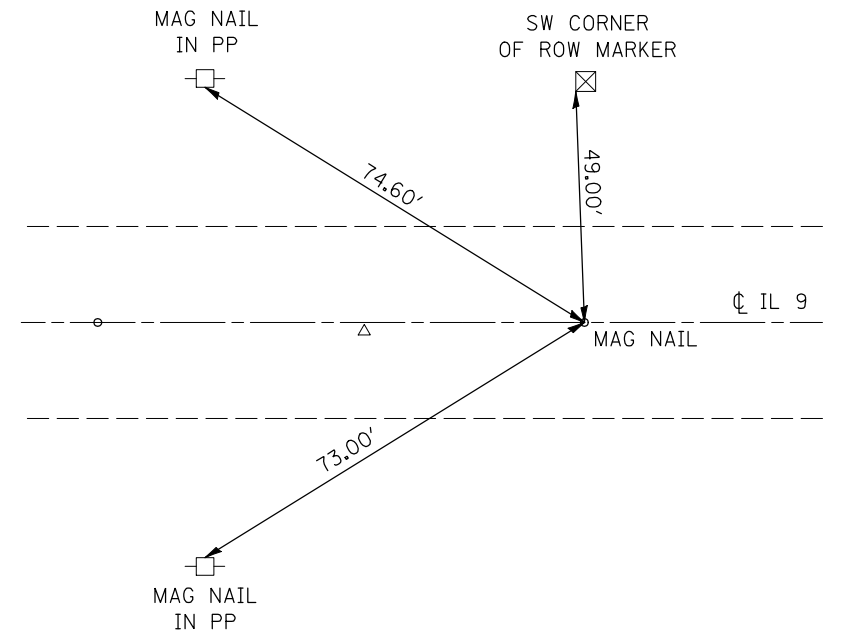
P.C.
STA. 1374 + 06.93



P.I.
STA. 1374 + 44.43, 0.06' RT.



P.T.
STA. 1374 + 81.93



FILE NAME =	USER NAME = ceorlockjd	DESIGNED -	REVISED -
ct:\pw\work\PWIDOT\CEARLOCKJD\dms87652\6590866-sh1-ATB.dgn		DRAWN -	REVISED -
	PLOT SCALE = 40.0000' / IN.	CHECKED -	REVISED -
	PLOT DATE = 2/6/2009	DATE -	REVISED -

STATE OF ILLINOIS
DEPARTMENT OF TRANSPORTATION

TIE POINTS			
SCALE:	SHEET NO.	OF SHEETS	STA. TO STA.

F.A.P. RTE.	SECTION	COUNTY	TOTAL SHEETS	SHEET NO.
697	46RS-8&1RS-2&46BDR	VERMILION	75	20
FED. ROAD DIST. NO. ILLINOIS FED. AID PROJECT			CONTRACT NO. 90866	